



4



TECHSTAR DRUM AMPLIFIER

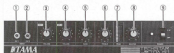
At last! An amplifier / monitor system specifically designed for electronic drums! The TDA 60 DRUM AMPLIFIER combines a high-headroom 60-watt amplifier with a heavy-duty 2-way speaker system for a punchy, wide frequency range, wide dynamic range reproduction system. The TDA60 may be used as a personal drum monitor and as a live or practice amp that outs through in any situation. The TDA60 features two inputs with individual volume controls, two-band active equalization, master level, control, peak power display and line-level output for use with PA's, recording studios and other reproducers. The speaker system features a 12" woofer in a bass-reflex enclosure and separate high output tweeter for smooth response with power and presence. The TDA60 DRUM AMPLIFIER—the perfect answer to a growing need.

TAMA

TECHSTAR

DRUM AMPLIFIER TD460

FRONT & REAR PANEL



① CH 1 INPUT

1/4" input jack for electronic drums, keyboards, drum machines, mixing boards and other sources with line level outputs.

② CH 2 INPUT

1/4" input jack accepts the same sources as above.

③ CH 1 VOLUME

Volume control for Channel 1 input.

④ CH 2 VOLUME

Volume control for Channel 2 input.

⑤ BASS

Tone control for low frequencies. Turning this control clockwise will boost the bass, while turning this knob counter-clockwise will cut the bass. The

center position on this knob is flat.

⑥ TREBLE

Tone control for high frequencies. Turning this control clockwise will boost the high frequencies, while turning this knob counter-clockwise will cut the highs. The center position is for a flat response.

⑦ PEAK

This PEAK voltage display gives a visual indication of actual output power of the TD460.

⑧ MASTER

This controls the overall volume level of channels 1 and 2.

⑨ POWER

This turns the AC power to the amplifier on and off.

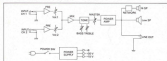
⑩ LINE OUT

This provides a line level output for direct connection to PA systems, recording gear or other amplifiers.

⑪ FUSE

The fuse protects the TD460 from damaging current levels. If the TD460 is plugged into a live AC outlet and no power is indicated when the power switch is turned on, then check the fuse. If replacement is necessary, always replace the fuse with the one that is specified on the rear panel.

BLOCK DIAGRAM



SPECIFICATIONS

Output Power	60W RMS (8ohms, THD 3%)
Speaker	Woofer -12", 30cm (8ohms) Tweeter (8ohms)
Input (ohm/ohm)	100ohms, -10dB
Line Out	-20dB, 150W
Power Requirements	120V AC, 60Hz, 75W
Dimensions	220-240W, 40, 50Hz, 54W
Weight	440W X 900H X 330Dmm 21.3kg

RACK DISPLAY STANDS



The RD5800 and RD5900 RACK DISPLAY STANDS are strong, convenient and low-cost rack system designed for displaying and using TECHSTAR Electronic Drum Systems. Ideal for store, studio, home and road use. The RD5800 and RD5900 keep your system safe and organized. The RD5900 features an angled design for easy access sitting or standing, and the RD5800 is straight for setting or permanent installations. Both are constructed of heavy-grade steel for years of reliable service.

TECHSTAR BAG



TD40	For TD500 Tom Tom Pad
TD50	For Two TD500 Tom Tom Pad
TD60	For TD500 Bass Drum Pad