

# ARTIST SPIRIT



STAGE MAGIC WITH **Ibanez**

## CONTENTS

JEM.....	4
ROADSTAR.....	6
ROADSTAR PRO 540S.....	8
ROADSTAR PRO 540R.....	10
ROADSTAR PRO 540P II.....	12
EX-EXB.....	14
SOUNDGEAR.....	16
ROADBASS.....	20
GB-JP.....	22
ARTSTAR.....	24
ARTFIELD.....	28
MAXXAS.....	30



The guitars and basses offered in this catalog represent the next step in the development of the Ibanez line. Building on the foundation of the past year, Ibanez has taken the challenge of refining existing models while introducing new instruments that meet the ever-changing needs of today's players.

Our commitment to produce only the highest grade guitars has led to the development of a multi-level quality control system. One that virtually assures each and every Ibanez will perform at a level once expected of only the finest hand-crafted instruments.

This past year has been one of tremendous growth for Ibanez. Yet, in the face of much-increased demand, we remain dedicated to the concept of a small, research-intensive core group of people whose only goal is the advancement of the art of guitar making.

***Ibanez***

# JEM 777

The introduction of the JEM series guitar marked the appearance of a new breed of instrument aimed at a new breed of player. Designed by Steve Vai in close cooperation with Ibanez, JEM guitars are painstakingly assembled from the finest available materials. Conspicuous attention to detail is evident from the trademark "Monkey Grip" handle to the distinctive "Disappearing Pyramid" and "Tree of Life" inlays.

This year, Steve and Ibanez have collaborated to add several new models, making the JEM lineup the most comprehensive offering of truly superb Rock guitars available anywhere.

STEVE VAI



- JEM777SK**
- AMERICAN BASSWOOD BODY
  - MAPLE TOP NECK
  - EDGE TREMOLO & TOP LOCK III
  - HIGH DIMARZIO PICKUPS
  - AVAILABLE COLORS DY, SK



- JEM777VBK**
- AMERICAN BASSWOOD BODY
  - MAPLE TOP NECK
  - EDGE TREMOLO & TOP LOCK III
  - HIGH DIMARZIO PICKUPS
  - AVAILABLE COLORS SK, DY, SK



**JEM777VOY**



- JEM777EP**
- AMERICAN BASSWOOD BODY
  - FLOWER PATTERN FINISH
  - MAPLE TOP NECK
  - EDGE TREMOLO & TOP LOCK III
  - HIGH DIMARZIO PICKUPS



- JEM777B**
- AMERICAN BASSWOOD BODY
  - MAPLE TOP NECK
  - EDGE TREMOLO & TOP LOCK III
  - HIGH DIMARZIO PICKUPS



- JEM777PBK**
- AMERICAN BASSWOOD BODY
  - MAPLE TOP NECK
  - EDGE TREMOLO & TOP LOCK III
  - HIGH DIMARZIO PICKUPS

# RG

## 550/560



Fast becoming the standard by which all other guitars in their class are judged, the RG550 and 560 get improved humbuckings for better crunch and definition. Quality basswood bodies and super-quick 24 fret necks respond to your every power chord and searing single note run. The IBANEZ EDGE tremolo system is set into a recessed cavity to allow the arm to be pulled up as well as pushed down.

When your music requires an instrument that won't let you down, reach for the Ibanez RG550 and 560 series guitars.



### RG550Y-M

- BASSWOOD BODY
- MAPLE 1<sup>st</sup> NECK
- EDGE TREMOLO & TOP LOK III
- HSH/IBZ PICKUPS (S1, Y2)
- AVAILABLE COLORS-BK, WH, FA, VP



### RG550LB-R

- LEFT HAND MODEL
- MAPLE FINGERBOARD-ROSS (BK-M)



### RG560WH-R

- BASSWOOD BODY
- MAPLE 1<sup>st</sup> NECK
- EDGE TREMOLO & TOP LOK III
- HSH/IBZ PICKUPS (S1, Y2)
- AVAILABLE COLORS-BK, WH, LR, VP



### RG360LR-R



■ TILT JOINT



■ Ibanez EDGE TREMOLO

(Licensed Under Floyd Rose Patents)  
& RECESSED TREMOLO CAVITY

# RG

## 750/760



For the guitarist who demands the finest in quality and workmanship at a price the competition can't match, Ibanez introduces the RG750 and 760.

Featuring American-made IBZ/USA pickups and bound necks with distinctive "Shark's Tooth" inlays, the 750 and 760 are true professional grade instruments. Combine that with the acclaimed IBANEZ EDGE tremolo and a lightning fast 24 fret neck and you have a guitar that can take you where you want to go-straight to the top.



### RG750FA

- BASSWOOD BODY
- MAPLE 1<sup>st</sup> NECK
- EDGE TREMOLO & TOP LOK III
- HSH/IBZ/USA PICKUPS (S2, F2)
- AVAILABLE COLORS-BK, WH, FA, VP



### RG750VP



### RG760JB

- BASSWOOD BODY
- MAPLE 1<sup>st</sup> NECK
- EDGE TREMOLO & TOP LOK III
- HSH/IBZ/USA PICKUPS (S2, F2)
- AVAILABLE COLORS-BK, WH, JB, LR



IBZ USA C2





ROADSTAR PRO

540S



A true player's instrument must have just the right balance of tone, playability and feel. These elements combine to make the 540S-type one of the finest expressions of the guitar-maker's art. Seldom has a new model established itself so quickly among the greatest guitarists of the time.

The unique profile of the ultra-thin mahogany body immediately sets the 540S-type apart from its competitors. Newly designed IBZ/USA pickups give it a voice with commanding power and punch.



W-TYPE NECK



- 540SLR**
- MAHOGANY BODY
  - MAPLE TOP BECK
  - EDGE TREMOLO & TOP LOCK II
  - IBZ/USA PICKUPS (C2, C2, F2)
  - AVAILABLE COLORS: BK, BL, LR



- 540SBK**
- MAHOGANY BODY
  - MAPLE TOP BECK
  - EDGE TREMOLO & TOP LOCK II
  - IBZ/USA PICKUPS (F1, F2)
  - AVAILABLE COLORS: BK, DY, LR



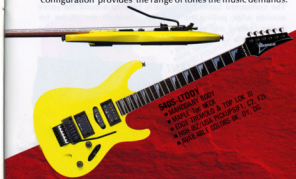
IBZ/USA F2

ROADSTAR PRO  
540S

LTD

HARGLAND

Branching out from the 540S-type's initial principle, Ibanez studied the different styles of playing and the varied requirements imposed upon the instrument by these diverse techniques. The 540S-LTD and 540S-CT5 are the results of this research. The 540S-LTD is designed for the modern Fusion and Hard Rock guitarist who desires an instrument geared to high velocity playing techniques. The bound inland neck simplifies high speed fingering while the H-S-H pickup configuration provides the range of tones the music demands.



- 540S-LTD**
- MAHOGANY BODY
  - MAPLE TOP BECK
  - EDGE TREMOLO & TOP LOCK II
  - IBZ/USA PICKUPS (F1, C2, F2)
  - AVAILABLE COLORS: BK, DY, LR

ROADSTAR PRO  
540S

CT5

The 540S-CT5 evolves the S-type concept to a new level of refinement. Created to enhance the playing experience by combining tremendous tonal depth and range with unlimited access to the upper register, this guitar is focused at the seasoned professional. For the musician looking for a top level instrument that can be appreciated for its beauty and craftsmanship as well as its tone and playability, try the new S-type 540 guitars from Ibanez.

ALL ACCESS NECK  
JOINT SYSTEM

- 540S-CT5**
- MAHOGANY BODY
  - MAPLE TOP BECK
  - EDGE TREMOLO & LOCKING FPGS
  - IBZ/USA PICKUPS (F1, C1, F2)
  - AVAILABLE COLORS: BK, C2, MS

# ROADSTAR PRO

## 540R



In the short time since its introduction, the 540R-type has established itself as a versatile tool for the serious musician. With drive and power to handle any situation, the 540R-type provides the flexibility and range needed to cover today's wide variety of musical environments.

The contoured basswood shape is beveled around the entire outside edge, pulling the body in closer to the player for better control and playability. All this adds up, to make the R-type 540 a valuable asset for the creative artist.

JOE SATRIANI



- 540R-AD**
- BASSWOOD BODY
  - MAPLE TYPE NECK
  - EDGE TREMOLO & TOP LOCK III
  - SSH-HZ PICKUPS (S1, V2)
  - AVAILABLE COLORS-AD, BK, WG



- 540R-HIMG**
- BASSWOOD BODY
  - MAPLE TYPE NECK
  - EDGE TREMOLO & TOP LOCK III
  - SSH-HZ PICKUPS (S1, V2)
  - AVAILABLE COLORS-AD, BK, WG



- 540R-BK**
- BASSWOOD BODY
  - MAPLE TYPE NECK
  - EDGE TREMOLO & TOP LOCK III
  - SSH-HZ/USA PICKUPS (S1, F1)
  - AVAILABLE COLORS-BK, JB, JR



540R-JB



- 540R-HJR**
- BASSWOOD BODY
  - MAPLE TYPE NECK
  - EDGE TREMOLO & TOP LOCK III
  - SSH-HZ/USA PICKUPS (S1, F1)
  - AVAILABLE COLORS-BK, JB, JR



EDGE-TYPE NECK



SSH-HZ/USA S1



SSH-HZ/USA F1

ROADSTAR PRO

540PII



Created specifically for high-powered Metal and Rock playing styles, the new Ibanez 540PII-type means business. Sports car looks, extra-hot custom-wound pickups and a new wider 24 fret neck provide a sound and feel that lets you know who's in control. The IBANEZ EDGE tremolo system is recessed into the body for better playability and radical "tremolo up" effects. Available in either two humbucking or one single, one humbucking pickup configurations. Ibanez 540PII-type- the ultimate guitar for burning the message home.



540PII-HBK

- BASSWOOD BODY
- MAPLE TOP NECK
- EDGE TREMOLO & TOP LOCK III
- HW/US/USA PICKUPS(P2, P3)
- AVAILABLE COLORS BK, WH, DY, MG



540PII-HMG



540PII-SHDY

- BASSWOOD BODY
- MAPLE TOP NECK
- EDGE TREMOLO & TOP LOCK III
- SH/US/USA PICKUPS(P2, P3)
- AVAILABLE COLORS BK, WH, DY, FA



540PII-SHVA



EDGE-TYPE TREMOLO



EDGE-TYPE PICKUP



EDGE-TYPE PICKUP



# EX

Looking for an outstanding guitar or bass at a reasonable price can be a difficult proposition. Fancy paint jobs can't mask unplayable necks and cheap hardware. Ibanez solves the problem with the introduction of the EX series guitars and basses.

Built with selected materials, the EX series gives the player real value for the money. Solid necks, real-world-tough hardware and punchy pickups provide the player with instruments that go the distance, no matter how hard you push them.



- EX2408K**
- JELUTONG BODY
  - MAPLE 1% NECK
  - EDGE II TREMOLO
  - SSH-PICKUPS
  - AVAILABLE COLORS-BK, WH, DB, PR



- EX350PR**
- JELUTONG BODY
  - MAPLE 1% NECK
  - TREMOLO & LOCK NUT
  - TRS101 TREMOLO
  - SSH-PICKUPS
  - AVAILABLE COLORS-BK, WH, DB, SL, PR



- EX3600B**
- JELUTONG BODY
  - MAPLE 1% NECK
  - TREMOLO & LOCK NUT
  - TRS101 TREMOLO
  - SSH-PICKUPS
  - AVAILABLE COLORS-BK, WH, DB, MB, PR



■ IBAÑEZ EDGE II TREMOLO



■ TRS101 TREMOLO

(Licensed Under Floyd Rose Patents)  
& NOTED TREMOLO CAVITY

# EXB



- EXB40A0B**
- JELUTONG BODY
  - MAPLE 3% NECK
  - STANDARD BRIDGE
  - 1% PICKUPS
  - AVAILABLE COLORS-BK, WH, DB, PR



- EXB40SPR**
- JELUTONG BODY
  - MAPLE 3% NECK
  - STANDARD BRIDGE
  - 1% PICKUPS
  - AVAILABLE COLORS-BK, WH, DB, PR



■ TILT BACK  
HEADSTOCK

# SDGR

## SOUNDGEAR



To match the dizzying technical heights reached by virtuoso bassists in every style of music, the Ibanez SOUNDGEAR series features refinements and details not found in any other bass guitar lineup. The gracefully contoured shape brings the instrument close to the body for playing ease, while the All Access Neck Joint makes reaching the highest notes effortless. Never has such a combination of balance and style been available in one instrument. If taking your playing to its highest level is your goal, be sure the bass you choose can get you there—SOUNDGEAR series from Ibanez.

**STEVE STEELE**  
(ALICE COOPER BAND)



POWER CURVE SYSTEM



- SR1000EBP**
- ASH BODY
  - MAPLE 3-ply NECK
  - TUNM-ADJUST BRIDGE
  - PJ-H2/USA PICKUPS (C2)
  - PJ-H2/USA PICKUPS (C2) & POWER CURVE SYSTEM
  - AVAILABLE COLORS BK, FR, JB, DB



**SR1000EFP**



H2/USA C2/PJ



ALL ACCESS NECK JOINT SYSTEM



- SR600BK**
- BASSWOOD BODY
  - MAPLE 3-ply NECK
  - TUNM-ADJUST BRIDGE
  - PJ-PICKUPS
  - AVAILABLE COLORS BK, WH, RD



**SR600WH**



- SR800LELR**
- BASSWOOD BODY
  - MAPLE 3-ply NECK
  - TUNM-ADJUST BRIDGE
  - PJ-ACTIVE PICKUPS (LO-J & EQ-B)
  - PJ-ACTIVE PICKUPS (LO-J, LP)
  - AVAILABLE COLORS BK, L.R, VP
  - SR800LELR LEFT HANDED MODEL



**SR800LEVP**



- SR900LELA**
- BASSWOOD BODY
  - MAPLE 3-ply NECK
  - TUNM-ADJUST BRIDGE
  - PJ-ACTIVE PICKUPS (LO-J & EQ-B)
  - PJ-ACTIVE PICKUPS (LO-J, LP)



- SR1100EOL**
- ASH BODY
  - MAPLE 3-ply NECK
  - TUNM-ADJUST BRIDGE
  - PJ-H2/USA PICKUPS (C2)
  - PJ-H2/USA PICKUPS (C2) & POWER CURVE SYSTEM
  - AVAILABLE COLORS CL, LA, OL



TUNM-ADJUST BRIDGE





- SR085LEJR**
- BASSWOOD BODY
  - MAPLE 3PLY NECK
  - 5-STRING STANDARD BRIDGE
  - JJ-ACTIVE PICKUPS (LO-JS, C1)
  - AVAILABLE COLORS: BK, FB, JR



- SR06FB**
- ASH BODY
  - MAPLE 3PLY NECK
  - HB-4 BRIDGE
  - JJ-ACTIVE PICKUPS (LO-JS, C1-JS) & EQ-BU
  - AVAILABLE COLORS: FB, JR



- SR2000E08**
- MAPLE BODY (THRU NECK)
  - MAPLE 3PLY NECK
  - HB-4 BRIDGE
  - PJ-HZ/USA PICKUPS (C2, C1)
  - POWER CURVE SYSTEM
  - AVAILABLE COLORS: BK, CP, DB



- SR2040E08**
- MAPLE BODY (THRU NECK)
  - MAPLE 3PLY NECK (RELESS)
  - HB-4 BRIDGE
  - PJ-HZ/USA PICKUPS (C2) & POWER CURVE SYSTEM



- SR9240M**
- QUILTED MAPLE BODY (THRU NECK)
  - MAPLE/MALNUT 5PLY NECK
  - HB-4 BRIDGE
  - PJ-HZ/USA PICKUPS (C1, C1)



- SR9240W**
- SAME AS SR9240M (EXCEPT BODY MATERIAL)
  - MAPLE BODY (THRU NECK)
  - AVAILABLE COLORS: BK, NY, MN



- SR9240P**
- SAME AS SR9240M (EXCEPT BODY MATERIAL)
  - PADOUK BODY (THRU NECK)



**SR924NT**

■ THRU NECK (SR2000E)



■ HB-5 BRIDGE



■ THRU NECK (SR924)



■ HB-4 BRIDGE



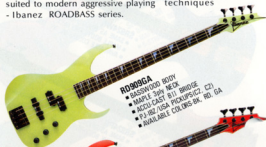
■ PJ-HZ USA C1 (P1, JR)

# ROADBASS



Lean and powerful. The ROADBASS series is built for Rock. Sharp-edged body contours and hot colors for eye-catching appeal. Super-fast necks, and pickups that cut through the crowd.

Specialized Hard Rock and Metal guitars have been available for some time. Unfortunately, bassists had to settle for instruments designed in another time for another style of playing. Now, the bass player has an instrument uniquely suited to modern aggressive playing techniques - Ibanez ROADBASS series.



- RD909GA**
- BASSWOOD BODY
  - MAPLE 3/4" NECK
  - ACCU-CAST B/I BRIDGE
  - P.J. RE/USA PICKUPS (C2)
  - AVAILABLE COLORS BK, WH, MG, VL



**RD909RD**



- RD707MG**
- BASSWOOD BODY
  - MAPLE 3/4" NECK
  - ACCU-CAST B/I BRIDGE
  - P.J. PICKUPS
  - AVAILABLE COLORS BK, WH, MG, VL



**RD707WH**



- RD808LBK**
- BASSWOOD BODY
  - MAPLE 3/4" NECK
  - ACCU-CAST B/I BRIDGE
  - P.J. ACTIVE PICKUPS (LO-P, LO-J) & EQ-BK
  - AVAILABLE COLORS BK, WH, LR, VP



**RD808LVP**



- RD828LBR**
- BASSWOOD BODY
  - MAPLE 3/4" NECK
  - ACCU-CAST B/I BRIDGE
  - P.J. ACTIVE PICKUPS (LO-P, LO-J) & EQ-BK
  - AVAILABLE COLORS BK, WH, LR, VP



■ LOW IMPEDANCE PICKUPS (LO-P, LO-J)



■ ACCU-CAST B/I BRIDGE



■ EQ-BK



GB



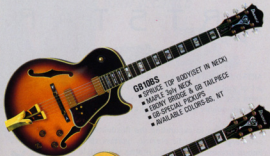
GEORGE BENSON

GB10 and GB30- two exquisite examples of the art of Jazz guitar. The GB10 was conceived by George Benson to be the ultimate live performance Jazz instrument. Its small body is perfectly balanced for comfort while the thick top rejects feedback and gives this guitar deep, powerful tone. The GB 30 reflects the growth of George's music with a thin profile and semi-solid design for more power and drive.



JOE PASS

Joe Pass virtually wrote the book on modern solo Jazz guitar. A style this unique requires an instrument that responds to every nuance and shading-enter the JP20. Joe carefully considered the elements that were needed to produce a guitar that would capture the delicate shadings of a chord voicing or cut through with a single note flurry. The result is what might just be the finest solo Jazz guitar- the JP20.

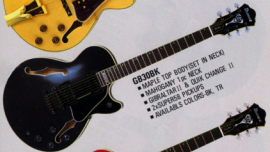


GB10S

- SPRUCE TOP BODY (SET IN NECK)
- MAPLE 34" NECK
- LEBONY BRIDGE & GB TAILPIECE
- GB SPECIAL PICKUPS
- AVAILABLE COLORS-BS, NT



GB10NT



GB30BK

- MAPLE TOP BODY (SET IN NECK)
- MAHOGANY 1 1/2" NECK
- GBHALTER II IN OAK CHANGE II
- GBHALTER II PICKUPS
- 2X SUPERSE PICKUPS
- AVAILABLE COLORS-BS, TR



GB30TR



JP20BS

- SPRUCE TOP BODY (SET IN NECK)
- MAPLE 34" NECK
- LEBONY BRIDGE & TAILPIECE
- SUPERSE PICKUP



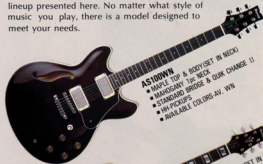


# ARTSTAR



ARTSTAR guitars represent the supreme expression of the art of guitar building. Ibanez has held a leading position in semi and full acoustic electric guitars for over a decade through quality workmanship and innovation.

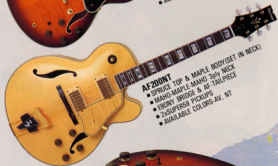
Our devotion to expanding the flexibility and playability of semi and full acoustic electric guitars can be seen in the lineup presented here. No matter what style of music you play, there is a model designed to meet your needs.



- AS100WN**
- MAPLE TOP & BODY (SET IN NECK)
  - MAHOGANY 1pc NECK
  - STANDARD BRIDGE & DUNK CHANGE II
  - WH PICKUPS
  - AVAILABLE COLORS-AV, VWN



- AS200AV**
- FLAME MAPLE TOP & MAPLE BODY (SET IN NECK)
  - MAHO MAPLE MAHO 3ply NECK
  - DIBRALTAR II & DUNK CHANGE II
  - 2x SUPERSE PICKUPS
  - AVAILABLE COLORS-AV, NT, WH



- AF200NT**
- SPRUCE TOP & MAPLE BODY (SET IN NECK)
  - MAHO MAPLE MAHO 3ply NECK
  - 2x SUPERSE PICKUPS
  - AVAILABLE COLORS-AV, NT



JOHN SCOFIELD



DIBRALTAR II & DUNK CHANGE II



- AM100AV**
- MAPLE TOP & BODY (SET IN NECK)
  - MAHOGANY 1pc NECK
  - STANDARD BRIDGE & DUNK CHANGE II
  - WH PICKUPS
  - AVAILABLE COLORS-AV, VWN



- AM200AV**
- DUNK MAPLE TOP & MAPLE BODY (SET IN NECK)
  - MAHO MAPLE MAHO 3ply NECK
  - DIBRALTAR II & DUNK CHANGE II
  - 2x SUPERSE PICKUPS



- AM300BK**
- MAPLE TOP & BASSWOOD BODY (SET IN NECK)
  - MAHOGANY 1pc NECK
  - STANDARD BRIDGE & DUNK CHANGE II
  - WH PICKUPS
  - AVAILABLE COLORS-BK, PN



- AM400TK**
- BIRD'S EYE MAPLE TOP & MAHOGANY BODY (SET IN NECK)
  - MAHO MAPLE MAHO 3ply NECK
  - DIBRALTAR II & DUNK CHANGE II
  - 2x SUPERSE PICKUPS
  - AVAILABLE COLORS-TK, MD, WH



AM400WH



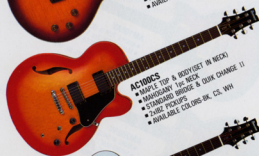
AM300, AM400 BODY BACK

# ARTSTAR



## AE200DV

- FLAME MAPLE TOP & BODY (SET IN NECK)
- MAHO MAPLE-MAHO 34Y NECK
- AE BRIDGE TAILPIECE
- AE BRIDGE TAILPIECE
- MINI-HAMBUCKER & P120 PICKUPS
- AVAILABLE COLORS BK, VT



## AC100CS

- MAPLE TOP & BODY (SET IN NECK)
- MANDARIN 1Y6 NECK
- STANDARD BRIDGE & DUNK CHANGE II
- 2102Z PICKUPS
- AVAILABLE COLORS BK, CS, WH



## AC100WH



## AL100WH

- MAPLE TOP & BASSWOOD BODY
- MAPLE 1Y6 NECK
- STANDARD BRIDGE & DUNK CHANGE II
- SW 12Z PICKUPS (S1, V1)
- AVAILABLE COLORS BK, JR, WH



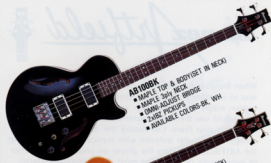
AL100WH BODY



AL100WH BRIDGE



AL100WH NECK



## AB100BK

- MAPLE TOP & BODY (SET IN NECK)
- MAPLE 34Y NECK
- DMM-AJUST BRIDGE
- 2102Z PICKUPS
- AVAILABLE COLORS BK, WH



## AB200AM

- MAPLE TOP & BODY (SET IN NECK)
- MAPLE-WOOD NECK
- DMM-AJUST BRIDGE
- 2102Z PICKUPS
- AVAILABLE COLORS AM, WH



## AB200WR

- MAPLE TOP & BODY (SET IN NECK)
- MAPLE-WOOD NECK (PRETLOSS)
- DMM-AJUST BRIDGE
- 2102Z PICKUPS
- AVAILABLE COLORS AM, WH



# Ibanez Artfield

When Ibanez began the development of ARTFIELD, the concept was to incorporate the finest hand-picked woods—bubinga, wenge, maple and mahogany—and design a series of guitars that would use these fine materials to their best advantage. We didn't stop there. Combining the most advanced technology in the guitar industry with meticulous craftsmanship, the ARTFIELD line offers the player an unusually fine series of instruments to satisfy the most discriminating guitarist.



## AFD5TB-Z

- QUILTED MAPLE & MAHOGANY BODY
- QUILTED MAPLE 5-PY NECK
- NO-TREMLO & LOCKING PEGS
- HH-82/USA PICKUPS (F1, T1)
- AVAILABLE COLORS: AM, TB



## AFD5AM-Z



## AFD408G-Z

- BUBINGA BODY
- BUBINGA MAPLE 5-PY NECK
- NO-TREMLO & LOCKING PEGS
- HH-82/USA PICKUPS



## AFD5AM-Z

- QUILTED MAPLE & MAHOGANY BODY
- QUILTED MAPLE 5-PY NECK
- NO-TREMLO & LOCKING PEGS
- HH-82/USA PICKUPS (F1, T1)
- AVAILABLE COLORS: AM, CS



## AFD5CS-Z



## AFD5PWR-Z

- BUBINGA-QUILTED MAPLE 5-PY
- BUBINGA MAPLE BODY
- QUILTED MAPLE 5-PY NECK
- NO-TREMLO & LOCKING PEGS
- HH-82/USA PICKUPS (F1, T1)
- AVAILABLE COLORS: AM, WR



## AFD5CTB-Z

- QUILTED MAPLE & MAHOGANY BODY
- SET IN NECK
- MAHOGANY MAPLE 5-PY NECK
- NO-TREMLO & LOCKING PEGS
- HH-82/USA PICKUPS (F1, T1)
- AVAILABLE COLORS: AM, TB



■ MAGNUM LOCK PEGS



■ NO-TREMLO



■ HH-82 ACCESSORY SYSTEM



# MAXXAS



Every so often a new idea in electric guitar design comes along that has something really different to offer. The right balance of shape and function, of sound and feel. MAXXAS is just such an idea.

MAXXAS' unique semi-hollow construction, All Access Neck joint and stainless steel low-profile tremolo system combine to produce an instrument of uncommon subtlety and grace. The specially designed pickups compliment the Honduras mahogany body for rich, full tone.

MAXXAS represents a new class of electric guitar designed for a new generation of players. The technical demands of contemporary guitar playing are enormous. Be sure the instrument you choose is up to the challenge—choose MAXXAS.



## MX3BH

- HONDURAS MAHOGANY BODY (SEMI-HOLLOW)
- MAPLE 1pc NECK
- HQ-TREMLO & LOCKING PEGS
- HH-82/USA PICKUPS (F1)
- AVAILABLE COLORS-BK, WH, MA



## MX3MA



## MX3SB

- SOFT MAPLE BODY (SEMI-HOLLOW)
- MAPLE 1pc NECK
- HQ-TREMLO & SURE CHANGE II
- HH-82/USA PICKUPS (F1)
- AVAILABLE COLORS-BK, SB



## MX3BK

- SOFT MAPLE BODY (SEMI-HOLLOW)
- MAPLE 1pc NECK
- HQ-TREMLO & LOCKING PEGS
- HH-82/USA PICKUPS (F1)
- AVAILABLE COLORS-BK, SB



■ MAGNUM LOCK PEGS ■ HQ-TREMLO



■ SEMI-HOLLOW BODY

# IBANEZ COLOR CHART

AB ATLANTIC BLUE  
AM AMBER  
AD AQUAMARINE  
AV ANTIQUE VIOLET  
BC BLACK CHERRY  
BG BURGUNDY  
BH BLACK HOLE  
BK BLACK  
BP BLACK PEARL  
BS BROWN SUNBURST  
CF CRYSTAL PEARL  
CS CHERRY SUNBURST  
DB DARK BLUE  
DG DARK GREY  
DV DARK VIOLET  
DY DESERT SUN YELLOW  
FA FIVE ALARM RED  
FR FOUNTAIN BLUE  
FP FLOWER PATTERN  
GA GREEN APPLE  
HP HEATHER PEARL  
JR JEWEL BLUE  
JR JEWEL RED  
LA LIGHT AMBER  
LR LIPSTICK RED  
MA MACAMA  
MG MAGENTA  
MO MIDNIGHT OLIVE  
MS MARINE SUNBURST  
NB NIGHT BLUE  
NT NATURAL  
OL OIL  
PD PADLOCK  
PR PEARL RED  
PW POLAR WHITE  
OM OILED MAPLE  
RB ROOT BEER  
RD RED  
SB SILKY BLUE  
SK SHOCKING PINK  
TB TRANSPARENT BLUE  
TK TRANSPARENT BLACK  
TR TRANSPARENT RED  
VP VIOLET PEARL  
WN WHITE  
WN WALNUT  
WR WINE RED  
YL YELLOW



Ibanez continues to grow as we redefine our role as a maker of electric guitars and basses in an ever-changing musical environment. Our continued dedication to respond to the needs of players in all forms of music will only get stronger in the years to come. We thank everyone for their support of our guitars and basses. It serves to strengthen our belief that by constantly listening, by constantly trying harder, we can build the best instruments we are capable of, and by doing so, make our contribution to the art and science of the electric guitar.





MATT BISSONETTE(DAVID LEE ROTH)



VINNIE MOORE



JOE SATRIANI



KEITH BEAUVAIS



KUNI



STEVE STEELE(ALICE COOPER BAND)



SHOYO(E-Z-O)



SHARE PEDERSEN(VIXEN)



IAN MCCULLOCH (ECHO AND THE BUNNYMEN)



FRANK GAMBALE



J.J. BELLE



TARD(E-Z-O)



ALEX SKOLNICK(TESTAMENT)



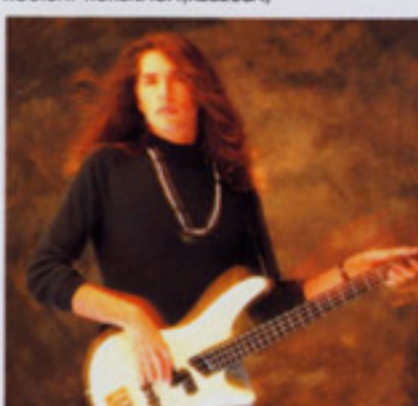
KOUCIHI KORENAGA(REBECCA)



DAN SAWYER



GARY MOON(JEFF PARIS)



JOE INFANTE(ROXANNE)



MIKE HICKEY(VENOM)



ALEX BLAKE(MANHATTAN TRANSFER)



DENNIS CHICK(TARA)



LES DAVIDSON



JOHN WETTON(ASIA)



PAUL SAMSON(SAMSON)



CLEM CLEMPSON



JOHN SCOFIELD



PAUL GILBERT



JOEY TAFOLLA



HIKARU YOSHIDA(DER ZIBET)



JENIFER BATTEN  
(MICHAEL JACKSON WORLD TOUR)



GEOFF GASCOYNE



BRUCE BOUILLET(RACER X)



NORIYUKI TAKAHASHI(REBECCA)



GENE ALLEN



KANE ROBERTS(ALICE COOPER BAND)



WAYNE JOHNSON



KEITH MORE



PAUL HOROWITZ(ALICE COOPER BAND)



JOHN ABERCROMBIE



JACK HUGHES(WANG CHUNG)  
MIKAL REID(WANG CHUNG)



IAN AITKEN



TAKESHI ASADA(A.R.B.)



NICK DOYNE-OITMAS



JOHN MCVIE(FLEETWOOD MAC)



WALLY VOSS



JAMIE GLASER



STEVE ROTHERY(MARILLION)



MALCOM MACFARLANE



ALAN BARLAM(HELLION)



PAT METHENY



JAMES BYRD



JEFF PARIS



ANDREW BLOCH(ATLANTIC STAR)



GERALD VEASLEY



LES PATTINSON  
(ECHO AND THE BUNNYMEN)



ARTI FUNARO(ALICE COOPER BAND)



DOUG BOYLE(ROBERT PLANT)



JON CLARK  
(MICHAEL JACKSON WORLD TOUR)



SCOTT HENDERSON



WILL SERGEANT  
(ECHO AND THE BUNNYMEN)



MYCHAL DAVIS(LIZZY BORDEN)



ROCKY GEORGE(SUICIDAL TENDENCIES)



SIMON EYRE



MARK EGAN



ROBERT SARZO(HURRICANE)



CHARLIE BURCHILL(SIMPLE MINDS)



LARRY MITCHELL



*Ibanez*

