

2 0 0 0 C A T A L O G

CONTENTS

ELECTRIC ACOUSTIC GUITARS

TALMAN seriesPg. 4-7

MASA seriesPg. 8-11

AE seriesPg. 12-14

ELECTRIC ACOUSTIC GUITARS

AW seriesPg. 16-17

PF seriesPg. 18-21

DT seriesPg. 27

ACOUSTIC GUITARS

AW seriesPg. 22-23

PF seriesPg. 24-25

DT seriesPg.26

ELECTRIC NYLON STRING GUITARS

TALMAN seriesPg. 4

TALMAN seriesPg. 5

PF seriesPg. 21

ELECTRIC ACOUSTIC BASS

TALMAN seriesPg. 6

AE seriesPg. 13

ACOUSTIC AMPLIFIERS

TROUBADOUR series . .Pg. 28-29

Ibanez

URBAN ACOUSTICS

2 0 0 0 C A T A L O G



Always on the cutting edge of guitar technology, Ibanez combines innovative concepts and unique designs with traditional production techniques and road-ready craftsmanship to open up new musical vistas, deliver a rich, acoustic sound and a higher level of playability.



Ibanez combines traditional construction methods, including "X" bracing, with original body designs and non-traditional ornamentation to suit every type of player in every price category.



Designed to accommodate everyone from kids to adults, Ibanez offers acoustic guitars in all shapes and sizes from mini to jumbo - all built with the care and craftsmanship Ibanez acoustic guitars have long been known for.



From solid body to shallow hollow body to full acoustic body, Ibanez makes an electric nylon string guitar for the beginner to the touring pro.



Available in four or five string models, hollow body or full acoustic body, Ibanez electric acoustic basses are quickly becoming the pro's instrument of choice for "unplugged" sessions, radio show appearances and quiet rehearsals.



Available in a 25-watt single 10" speaker model or a stereo 50-watt double 10" model, Ibanez each acoustic guitar amp is packed with features that are designed to get the most out of any electric acoustic guitar.

Talman

IT TAKES ONE TO KNOW ONE

Only a rock player can tell you what an acoustic guitar built for rock should sound, feel and look like. That's why we asked the same guys who design (and play) our solid body electrics to design the new Talman series - a line of acoustic guitars that are unquestionably made to rock! The entire Talman series guitar line with the exception of the TCY10 and TCY18 features the advanced EMF Acoustics B-Band electret pickups and AEQ preamps.



INTERMAX

With most acoustic guitars, feedback can be a problem when playing at loud stage volumes. That's why the Intermax guitars are made of solid mahogany and topped with an exquisite quilted maple. This tried and true combination of woods gives the guitar a solid bottom and a bright, airy top end. And best of all, with no sound chamber, you don't have to worry about feedback.

TMX20

The solidbody feel, electric guitar style neck and compact size of the instrument makes the Intermax feel like home for any electric guitar player.

- Solid body mahogany back / quilted maple top construction
- Looks and feels like an electric guitar
- EMF Acoustics B-Band pickup and custom AEQ2C 2 band EQ

TMX20 AM



TMX20N

With a narrower neck width (44mm at the nut) than a standard nylon string guitar, the TMX20N is the electric guitar player's nylon string instrument.

- Solid mahogany back / quilted maple top construction
- Narrow (44mm at the nut) neck for easy maneuverability
- EMF Acoustics B-Band pickup and custom AEQ2C 2 band EQ

TMX20N AM



	TMX20
Body Top	Solid Quilted Maple
Back & Sides	Mahogany
Binding	Multi-Ply
Neck	Mahogany
Fingerboard	Rosewood
Tuners	Die-Cast, Silver Nickel
Pickup	EMF B-BAND
Electronics	AEQ2C
Strings	Bronze
Finish	AM (Amber)
Total Length	950mm (37 3/8")
Body Length	415mm (16 3/8")
Body Width	330mm (13")
Body Depth	40mm (1 5/8")
	TMX20N
Strings	Nylon
Nut width	44mm
Total Length	960mm (37 3/4")



INTERTOUR

For the guy who has to do it all with just one acoustic guitar, the Intertour is the perfect acoustic guitar choice. With its compact size and light weight, the Intertour is easy to carry around. Because of its hollow construction which yields a rich, warm tone, this instrument not only sounds great amplified, but it is also loud enough to hear in most unplugged situations. Due to its reduced chamber size, feedback (even at concert volumes) will be minimal.

TTR30

With its hollow body, the TTR30 gives you just enough volume for most unplugged situations.

- Slim, hollowed mahogany body for a resonant sound
- "X" braced solid spruce top
- EMF Acoustics B-Band pickup and custom AEQ2C 2 band EQ

TTR30N

With a narrower neck width (44mm at the nut) than a standard nylon string guitar, switching between an electric guitar and the TTR30N is a breeze.

- Narrow (44mm at the nut) neck for easy maneuverability
- "X" braced solid spruce top
- EMF Acoustics B-Band pickup and custom AEQ2C 2 band EQ

TTR30 NT



TTR30N NT



	TTR30
Body Top	Hollow Solid Spruce
Bracing	X-Bracing
Back & Sides	Mahogany
Binding	Multi-Ply
Soundhole	TTR Special 4
Neck	Mahogany
Fingerboard	Rosewood
Tuners	Die-Cast, Silver Nickel
Pickup	EMF B-BAND
Electronics	AEQ2C
Strings	Bronze
Finish	NT (Natural)
Total Length	995mm (39 1/8")
Body Length	460mm (18 1/8")
Body Width	365mm (14 3/8")
Body Depth	50mm (2")
	TTR30N
Strings	Nylon
Nut width	44mm
Total Length	1005mm (39 5/8")



Talman

INTERTOUR

Playability was a key issue in the design concept of these basses. By utilizing a lightweight, thin body of mahogany with a spruce top and a detachable neck, the TTR34B and TTR35B are as comfortable to play as an electric bass. The B-band pickup and preamp give these basses a natural acoustic bass sound through any type of amplification.

TTR34B / TTR35B

- Separate bridge and tailpiece for optimum string tension
- Special "fan" bracing design developed specifically for the TTR34B and TTR35B
- EMF Acoustics B-Band pickup and custom AEQ2C 2 band EQ



	TTR34B
Body	Hollow
Top	Spruce
Bracing	Fan Bracing
Back & Sides	Mahogany
Binding	Multi-Ply
Soundhole	TTR Special 4
Neck	Maple
Fingerboard	Rosewood
Turners	Die-Cast, Silver Nickel
Pickup	EMF B-BAND
Electronics	AEQ2C
Strings	4-Nickel
Finish	NT (Natural)
Total Length	1110mm (43 3/4")
Body Length	505mm (19 7/8")
Body Width	370mm (14 5/8")
Body Depth	50mm (2")
	TTR35B
Strings	5-Nickel

INTER CITY

With their slightly deeper "Urban Concert" size, the Talman Inter City guitars retain the comfortable body size of the other Talman acoustics, but produce a louder, unamplified sound.

TCY10 / TCY18

- Deeper "Urban Concert" size body with tilted, oval-shaped sound hole and maximum upper fret access
- Choice of "X" braced ash or spruce top
- Piezo pickup and custom AEQ201 2-band EQ



	TCY10
Body	Urban Concert
Top	Spruce
Bracing	X-Bracing
Back & Sides	Nato
Binding	Multi-Ply
Soundhole	Tilted Oval
Neck	Mahogany
Fingerboard	Hardwood
Turners	Die-Cast, Chrome
Pickup	Piezo
Electronics	AEQ201
Strings	BK (Black)
Total Length	995 mm (39 1/8")
Body Length	460mm (18 1/8")
Body Width	365mm (14 3/8")
Body Depth	90mm (3 1/2")
	TCY18
Top	Ash
Finish	TBL (Transparent Blue)



MASA

SO WARM, SO REAL, SO BIG!

Some guys want it all. The convenience of an acoustic/electric, but with the natural sound of a fine acoustic guitar miked up. After four years of extensive R&D, Ibanez engineers and craftsmen have developed a guitar to meet this demand. The Masa series of guitars feature a specially designed, triple coil magnetic pickup and AEQ3M EQ which combine to give you the most natural sounding, amplified acoustic guitar sound possible. The exclusive AP1 pickup resides in the "sweet spot" of the guitar, where studio engineers would normally place a mic to capture the natural resonance of the instrument. But this is only part of the magic.

Another factor is the AEQ3M EQ. Featuring an innovative level control for the 1st and 2nd strings, the AEQ3M enables you to adjust the string balance perfectly for any situation. These features combine to give the Masa series guitars a warmth, clarity and balance that must be heard to be believed.



SX90 BK



SX90 BS

	SX90
Body	SX Small
Top	Solid Spruce
Bracing	X-Bracing
Back & Sides	Mahogany
Binding	Multi-Ply
Soundhole	Pick Shape
Neck	Mahogany
Fingerboard	Rosewood
Tuners	Die-Cast, Gold
Pickup	AP-1 Magnetic
Electronics	AEQ3M
Strings	Bronze
Finish	BK (Black), BS (Brown Sunburst)
Total Length	995mm (39 1/8")
Body Length	455mm (17 7/8")
Body Width	345mm (13 5/8")
Body Depth	95mm (3 3/4")

SX 90 size compared to a standard 25.5" scale electric guitar





MASA



GX90 BK



GX90

- Original dreadnought size body designed for maximum projection and rich tone
- Solid spruce top for a full and natural resonance
- True acoustic guitar sound - plugged in or unplugged



GX90 BS

	GX90
Body	GX90 Original
Top	Solid Spruce
Bracing	X-Bracing
Back & Sides	Mahogany
Binding	Multi-Ply
Soundhole	Round Shape
Neck	Mahogany
Fingerboard	Rosewood
Tuners	Die-Cast, Gold
Pickup	AP-1 Magnetic
Electronics	AEQ3M
Strings	Bronze
Finish	BK (Black), BS (Brown Sunburst)
Total Length	1075mm (42 3/8")
Body Length	510mm (20 1/8")
Body Width	400mm (15 3/4")
Body Depth	130mm (5 1/8")

GX70

- Original dreadnought size body with oval soundhole
- "X" braced spruce top for greater projection and bright tone
- Deep cutaway for easy access to the upper frets



GX70 BK

GX70 BS

	GX70	JX70
Body	GX70 Original	JX70 Arched
Top	Spruce	Ash
Bracing	X-Bracing	Parallel
Back & Sides	Mahogany	Mahogany
Binding	Multi-Ply	Multi-Ply
Soundhole	Oval Shape	Oval Shape
Neck	Mahogany	Mahogany
Fingerboard	Rosewood	Rosewood
Tuners	Die-Cast, Chrome	Die-Cast, Chrome
Pickup	AP-1 Magnetic	AP-1 Magnetic
Electronics	AEQ3M	AEQ3M
Strings	Bronze	Bronze
Finish	BK (Black), BS (Brown Sunburst)	TDB (Transparent Dark Blue), TPL (Transparent Purple)
Total Length	1055mm (41 1/2")	1040mm (41")
Body Length	510mm (20 1/8")	485mm (19 1/8")
Body Width	400mm (15 3/4")	375mm (14 3/4")
Body Depth	125mm (4 7/8")	120mm (4 3/4")



JX70

- Original grand concert body w/ Florentine cutaway
- Fine ash top in transparent finishes
- Gracefully arched top and back



JX70 TDB

JX70 TPL

AE THE ORIGINAL IBANEZ ACOUSTIC ELECTRICS

Our growing list of AE endorsers says it all! From John Petrucci of Dream Theater to David Lowery of Cracker, top live performers have been using our AE series guitars for years. The slim, feedback resistant bodies of the AE series guitars have long been considered the ultimate in live performance mobility and comfort. With the introduction of the new AEM and AEJ guitars, we continue this tradition, but with a few twists. The new AEM guitars feature an arched top and back for a unique three-dimensional shape, while the new AEJ guitars feature a traditional humbucking pickup near the neck for a warm, jazzy tone.



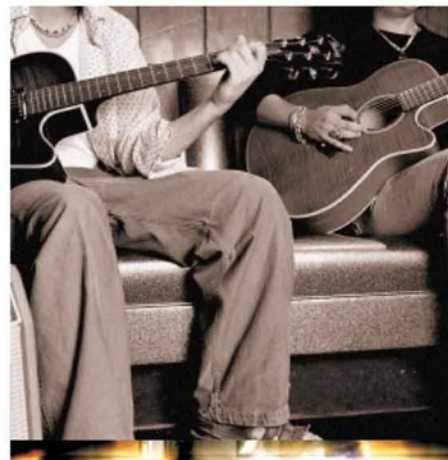
AEF18 NT



AEF18

- Traditional "X" braced spruce top and a finely arched back
- Original Marquetry inlay around the sound hole
- Fishman® Sonicore® pickup and AEQ40 for the ultimate in live performance sound

	AEF18
Body	AE Original
Top	Spruce
Bracing	X-Bracing
Back & Sides	Mahogany
Binding	Multi-Ply
Soundhole	Round Shape
Neck	Mahogany
Fingerboard	Rosewood
Tuners	Die-Cast, Chrome
Pickup	Fishman® Sonicore®
Electronics	AEQ40
Strings	Bronze
Finish	NT (Natural)
Total Length	1050mm (41 3/8")
Body Length	510mm (20 1/8")
Body Width	400mm (15 3/4")
Body Depth	110mm (4 3/8")



AEM34B

- Arched top and back with oval soundhole
- 32" scale neck with a cutaway for ease of access to upper frets
- Shadow pickup and AEQ45 EQ

	AEM 34B
Body	AE, Arched
Top	Spruce
Bracing	Parallel
Back & Sides	Mahogany
Binding	Multi-Ply
Soundhole	Oval Shape
Neck	Mahogany
Fingerboard	Rosewood
Tuners	Die-Cast, Chrome
Pickup	Shadow SH064
Electronics	AEQ45
Strings	Bronze
Finish	BK (Black)
Total Length	1160mm (45 5/8")
Body Length	510mm (20 1/8")
Body Width	400mm (15 3/4")
Body Depth	125mm (4 7/8")



AEM34B BK



AEM20 TVL



AEM28 TRD

AEM20 / AEM28

- Original AE shape with arched top and back designed for great projection and minimal feedback
- Slim, flat tempered neck for easy maneuvering
- Fishman® Sonicore® pickup and AEQ40 for the ultimate in live performance sound

	AEM 20	AEM 28
Body	AE, Arched	AE, Arched
Top	Spruce	Flamed Maple
Bracing	Parallel	Parallel
Back & Sides	Mahogany	Maple
Binding	Multi-Ply	Multi-Ply
Soundhole	Oval Shape	Oval Shape
Neck	Mahogany	Mahogany
Fingerboard	Rosewood	Rosewood
Tuners	Die-Cast, Chrome	Die-Cast, Gold
Pickup	Fishman® Sonicore®	Fishman® Sonicore®
Electronics	AEQ40	AEQ40
Strings	Bronze	Bronze
Finish	TVL (Transparent Violet)	TRD (Transparent Red)
Total Length	1050mm (41 3/8")	1050mm (41 3/8")
Body Length	510mm (20 1/8")	510mm (20 1/8")
Body Width	400mm (15 3/4")	400mm (15 3/4")
Body Depth	125mm (4 7/8")	125mm (4 7/8")



AEJ70 / AEJ90

- Arched top and back designed for great projection and minimal feedback
- Humbucking pickup near the neck for a warm, electric jazz tone
- Separate rosewood bridge and tailpiece for a warm, woody tone

AEJ70 VS



AEJ90 MS



	AEJ 70	AEJ 90
Body	AE, Arched	AE, Arched
Top	Spruce	Flamed Maple
Bracing	Parallel	Parallel
Back & Sides	Mahogany	Maple
Binding	Multi-Ply	Multi-Ply
Soundhole	F-Shape	F-Shape
Neck	Mahogany	Mahogany
Fingerboard	Rosewood	Rosewood
Turners	Die-Cast, Chrome	Die-Cast, Gold
Pickup	Humbucking PU	Humbucking PU
Electronics	1 Volume & 1 Tone	1 Volume & 1 Tone
Strings	Nickel	Nickel
Finish	VS (Violin Sunburst)	MS (Marine Sunburst)
Total Length	1050mm (41 3/8")	1050mm (41 3/8")
Body Length	510mm (20 1/8")	510mm (20 1/8")
Body Width	400mm (15 3/4")	400mm (15 3/4")
Body Depth	125mm (4 7/8")	125mm (4 7/8")





ARTWOOD
ELECTRIC ACOUSTICS

THE TRADITIONAL IBANEZ ACOUSTIC GUITAR FOR THE PERFORMING MUSICIAN

While maintaining the traditional construction and craftsmanship of the AW series guitars, the CE version of the AW guitar adds a cutaway and Fishman pickups. For the performing musician who finds himself using his acoustic guitar in live, amplified situations as well as in unplugged settings, there is no better choice of instrument. The AW100CE guitars features a solid Engelman spruce top and scalloped bracing that provides a brilliant combination of volume and balanced tone. The AW is also available in a Jumbo size, 7-string version, which allows the acoustic guitarist to venture into new sonic territory.



AJ307CE NT



Fishman® Acoustic Matrix Pickup and Fishman PREFIX™ EQ

With sound conducted along its entire length of special copolymer material, Fishman's exclusive Acoustic Matrix Pickup provides true high fidelity flat response with no dead spots. The PREFIX™ EQ specifically complements the Acoustic Matrix and features active shelving bass and treble controls with a parametric midrange control for very smooth and musical tone shaping.

AJ307CE

- The AJ307 adds a seventh low B string for extra deep chord voicings and soloing options
- Jumbo size body with solid Engelman spruce top to maximize the low end provided by the low B string
- Fishman® Acoustic Matrix pickup and Fishman PREFIX™ EQ

	AJ 307 CE
Body	AJ Cutaway
Top	Solid Engelman spruce
Bracing	X-Scalloped
Back & Sides	Rosewood
Binding	Multi-Ply
Neck	Mahogany
Fingerboard	Rosewood
Tuners	Grover, Gold
Pickup	Fishman® Acoustic Matrix
Electronics	Fishman PREFIX™
Strings	7-Bronze
Finish	NT (Natural)
Total Length	1060mm (41 3/4")
Body Length	510mm (20 1/8")
Body Width	415mm (16 3/8")
Body Depth	125mm (4 7/8")



Fishman® Sonicore® Pickup and Ibanez AEQ40

Fishman's exclusive Sonicore pickup utilizes a copolymer material infused with a special braided wire cable. Like the Acoustic Matrix, the Sonicore's design eliminates pickup dead spots, but the two pickups are different in response; the Sonicore was designed to provide more low and upper end response and less midrange. Developed by Ibanez and approved by Fishman, the AEQ40 EQ was designed to work exclusively with the Fishman Sonicore pickup and Ibanez acoustic-electric guitars. Shelving treble and bass controls with two fixed midrange peak and dip controls have been preset to achieve maximum response. The AEQ40's low power circuitry maximizes battery life and a battery indicator and top mount battery compartment provide easy battery checks and changes.

AW50CE / AW100CE

- Solid Engelman spruce top for extra volume and projection (AW100CE)
- Scalloped bracing for maximum vibration and strength
- Fishman® Sonicore® pickup and AEQ40 for the ultimate in live performance sound



AW100CE NT



AW100CE TDB



AW50CE LG

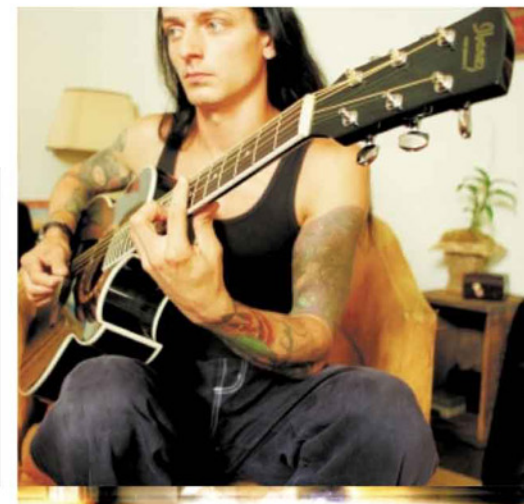
	AW 100 CE	AW 50 CE
Body	AW Cutaway	AW Cutaway
Top	Solid Engelman Spruce	Solid Spruce
Bracing	X-Scalloped	X-Scalloped
Back & Sides	Mahogany	Maple
Binding	Multi-Ply	Multi-Ply
Neck	Mahogany	Mahogany
Fingerboard	Rosewood	Rosewood
Tuners	Glover, Chrome	Die-Cast, Chrome
Pickup	Fishman® Sonicore®	Fishman® Sonicore®
Electronics	AEQ40	AEQ40
Finish	NT (Natural)	LG (Low Gloss)
	TDB (Transparent Dark Blue)	
Total Length	1045mm (41 1/8")	1045mm (41 1/8")
Body Length	510mm (20 1/8")	510mm (20 1/8")
Body Width	400mm (15 3/4")	400mm (15 3/4")
Body Depth	125mm (4 7/8")	125mm (4 7/8")

THE ELECTRIC ACOUSTIC "TAKE IT ANYWHERE" GUITAR

Equally at home under the bright lights of a concert venue or on a coffeehouse stage, the PF electric acoustics provide an affordable alternative to miking your acoustic guitar for live applications.



	PF 300 CE	PF 400 CE
Body	PFS-Cutaway	PFS-Cutaway
Top	Spruce	Sycamore
Bracing	X-Bracing	X-Bracing
Back & Sides	Mahogany	Mahogany
Binding	Multi-Ply	Multi-Ply
Soundhole	Wood Marquetry	Wood Marquetry
Neck	Mahogany	Mahogany
Fingerboard	Rosewood	Rosewood
Tuners	Die-Cast, Chrome	Die-Cast, Chrome
Pickup	Piezo	Piezo
Electronics	AEQ30	AEQ30
Finish	NT (Natural) TGR (Transparent Green)	TBR (Transparent Brown)
Total Length	1040mm (41")	1040mm (41")
Body Length	515mm (20 1/4")	515mm (20 1/4")
Body Width	400mm (15 3/4")	400mm (15 3/4")
Body Depth	125mm (4 7/8")	125mm (4 7/8")



PF100DE NT

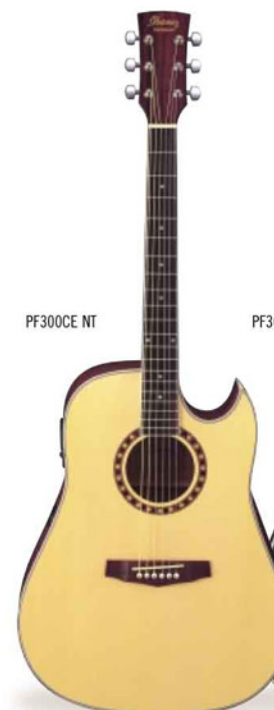


PF200CE TBL

	PF 100 DE	PF 200 CE
Body	PF Original	PF Cutaway
Top	Spruce	Ash
Bracing	X-Bracing	X-Bracing
Back & Sides	Nato	Nato
Binding	Multi-Ply	Multi-Ply
Pickguard	Wood Inlay	Wood Inlay
Neck	Rosewood	Mahogany
Fingerboard	Rosewood	Rosewood
Tuners	Die-Cast, Chrome	Die-Cast, Chrome
Pickup	Piezo	Piezo
Electronics	AEQ201	AEQ30
Finish	NT (Natural)	TBL (Transparent Blue)
Total Length	1040mm (41")	1040mm (41")
Body Length	515mm (20 1/4")	515mm (20 1/4")
Body Width	400mm (15 3/4")	400mm (15 3/4")
Body Depth	125mm (4 7/8")	125mm (4 7/8")

PF100DE / PF200CE

- Original dreadnought body shape for great projection and tone
- Contemporary acoustic / electric guitar features including a piezo pickup and AEQ201 EQ
- Original wooden pickguard inlay



PF300CE NT



PF300CE TGR



PF300CE / PF400CE

- Original dreadnought body shape w/florentine cutaway
- Wood Marquetry soundhole inlay
- Piezo pickup and AEQ30 EQ provides "concert ready" sound



PF400CE TBR



PF PERFORMANCE ELECTRIC ACOUSTIC

PC300CE

- Grand concert style body for superior comfort, better clarity and immediate response
- Original cutaway provides easy upper fret access
- Piezo pickup and AEQ30 EQ provides "concert ready" sound

	PC300CE
Body	PC Original
Top	Spruce
Bracing	X-Bracing
Back & Sides	Mahogany
Binding	Multi-Ply
Soundhole	Wood Marquetry
Neck	Mahogany
Fingerboard	Rosewood
Tuners	Die-Cast, Chrome
Pickup	Piezo
Electronics	AEQ30
Finish	NT (Natural)
Total Length	TDB (Transparent Dark Blue)
Body Length	1015mm (40")
Body Width	485mm (19 1/8")
Body Depth	375mm (14 3/4")
	100mm (4")

PC300CE NT



PC300CE TDB



PC300NCE NT



52mm Nut

PC300NCE / PC344NCE

- Grand concert style body with classical "fan" bracing for traditional nylon string tone
- Piezo pickup and AEQ30 EQ provides "concert ready" sound
- Two available nut sizes: 52mm for the classical guitar player accustomed to a wider neck (PC300NCE) and 44mm for the rock guitar player who prefers an electric guitar neck (PC344NCE)

	PC 300 NCE
Body	PC Original
Top	Spruce
Bracing	Fan-Bracing
Back & Sides	Mahogany
Binding	Multi-Ply
Soundhole	Wood Marquetry
Neck	Mahogany
Nut Width	52mm
Fingerboard	Rosewood
Tuners	Classic
Pickup	Piezo
Electronics	AEQ30
Finish	NT (Natural)
Total Length	1025mm (40 3/8")
Body Length	485mm (19 1/8")
Body Width	375mm (14 3/4")
Body Depth	100mm (4")
	PC 344 NCE
Nut Width	44mm
Finish	TPL (Transparent Purple)



44mm Nut



PC344NCE TPL





ARTWOOD
ACOUSTIC GUITARS

THE TRADITIONAL IBANEZ ACOUSTIC GUITAR

For over twenty years, Ibanez has been making fine acoustic guitars. The AW series continues this tradition of fine craftsmanship. Scalloped bracing is used for the AW series, which allows for maximum vibration while maintaining the highest degree of strength. Additionally, solid Engelmann spruce tops can be found on the AW100. Engelmann spruce tops are known to produce a slightly louder, more projective sound than Sitka spruce, and this rich sound only improves with age!

AW100 TGR



AW50 / AW100

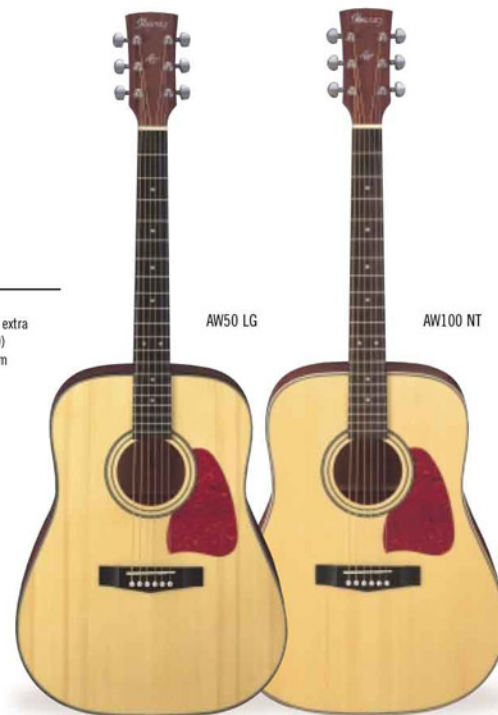
- Traditional craftsmanship
- Solid Engelmann spruce top for extra volume and projection (AW100)
- Scalloped bracing for maximum vibration and strength

	AW 50	AW 100
Body	AW Dreadnought	AW Dreadnought
Top	Solid Spruce	Solid Engelmann Spruce
Bracing	X-Scalloped	X-Scalloped
Back & Sides	Maple	Mahogany
Binding	Multi-Ply	Multi-Ply
Neck	Mahogany	Mahogany
Fingerboard	Rosewood	Rosewood
Tuners	Die-Cast, Chrome	Grover, Chrome
Finish	LG (Low Gloss)	NT (Natural)
		TGR (Transparent Green)
Total Length	1045mm (41 1/8")	1045mm (41 1/8")
Body Length	510mm (20 1/8")	510mm (20 1/8")
Body Width	400mm (15 3/4")	400mm (15 3/4")
Body Depth	125mm (4 7/8")	125mm (4 7/8")



AW50 LG

AW100 NT



THE "TAKE IT ANYWHERE" GUITAR

Whether you're playing at home, on a camping trip or in the confines of a recording studio, the PF series guitars are your most affordable option in a quality, traditionally crafted dreadnought guitar.



PF100 / PF112 / PF200

- Original dreadnought body shape for great projection and tone
- Traditional craftsmanship and selected tone woods including ash and spruce tops
- Original wooden pickguard inlay



PF200 TBL



PF100 NT

PF112 NT

	PF 100
Body	PF Original
Top	Spruce
Bracing	X-Bracing
Back & Sides	Mahogany
Binding	Multi-Ply
Pickguard	Wood Inlay
Neck	Mahogany
Fingerboard	Rosewood
Tuners	Die-Cast, Chrome
Pickup	Piez
Electronics	AE030
Finish	NT (Natural)
Total Length	1040mm (41")
Body Length	515mm (20 1/4")
Body Width	400mm (15 3/4")
Body Depth	125mm (4 7/8")
	PF 112
String	12-Strings
Finish	NT (Natural)
Length	1080mm (42 1/2")
	PF 200
Top	Ash
Finish	TBL (Transparent Blue)



PF400 TBR



PF300 / PF400

- Original dreadnought body shape for great projection and tone
- Traditional craftsmanship and selected tone woods including spruce and sycamore tops
- Wood Marquetry and pickguard-less design for maximum body resonance



PF300 TRD

PF300 NT

	PF 300
Body	PF Original
Top	Spruce
Bracing	X-Bracing
Back & Sides	Mahogany
Binding	Multi-Ply
Soundhole	Wood Marquetry
Neck	Mahogany
Fingerboard	Rosewood
Tuners	Die-Cast, Chrome
Finish	NT (Natural)
	TRD (Transparent Red)
Total Length	1040mm (41")
Body Length	515mm (20 1/4")
Body Width	400mm (15 3/4")
Body Depth	125mm (4 7/8")
	PF 400
Top	Sycamore
Finish	TBR (Transparent Brown)



IF JAMES BOND WERE A GUITARIST, HE'D PROBABLY OWN A DAYTRIPPER GUITAR.

The Daytripper guitar is not your ordinary travel guitar. The Daytripper is compact in size, but plays like a full-size guitar and sounds amazingly big. The instrument is designed to the standard E-A-D-G-B-E tuning - unlike some of the other travel guitars out there. This makes the Daytripper perfect for playing along to CDs or radio, to take along to picnics or the beach, or for impromptu jams and rehearsals.



DAYTRIPPER ACOUSTIC

DT5

- The perfect guitar for kids or the adult on the go
- Full-size playability and tone in a compact package
- Traditional craftsmanship and appearance

DT5 BK



DT5 NT



DT 5	
Body	DT Body
Top	Spruce
Bracing	X-Bracing
Back	Nato
Binding	Multi-Ply
Neck	Mahogany
Fingerboard	Hardwood
Tuners	Covered, Chrome
Finish	BK (Black)
	NT (Natural)
Total Length	880mm (34 5/8")
Body Length	410mm (16 1/8")
Body Width	315mm (12 3/8")
Body Depth	95mm (3 3/4")

DT 70

- "Gig ready" Daytripper model with piezo pickup and AEQ201 EQ
- DT cutaway for easy access to upper frets
- Traditional craftsmanship and appearance

DT70 TBL



DT70 TGR



DT 70	
Body	DT Cutaway
Top	Ash
Bracing	X-Bracing
Back	Nato
Binding	Multi-Ply
Neck	Mahogany
Fingerboard	Hardwood
Tuners	Die-Cast, Chrome
Pickup	Piezo
Electronics	AEQ201
Finish	TBL (Transparent Blue)
	TGR (Transparent Green)
Total Length	880mm (34 5/8")
Body Length	410mm (16 1/8")
Body Width	315mm (12 3/8")
Body Depth	95mm (3 3/4")

ACOUSTIC AMPLIFIERS

PUMP UP THE VOLUME

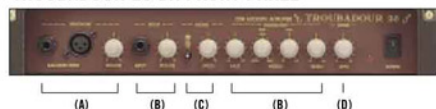
Bring one of these portable little beasts to your next gig or rehearsal and get heard over the drums and the rest of the band. Each amp features a microphone input for "sing and play" capability and built-in chorus.

Model : Troubadour 25 DX

- Produces warm lows and crystal clear highs for a natural acoustic sound
- Built in chorus with speed control adds a shimmering thickness to the sound
- Microphone inputs for "sing and play" capability

The Troubadour 25 DX acoustic amplifier offers a completely natural acoustic guitar sound with rich, warm lows and sparkling, crystal clear highs. The combination of the Troubadour 25 DX's specially designed cabinet and PJ30A speaker emphasizes the acoustic guitar's natural warmth while a tuned port accurately reproduces the full resonance of the guitar's sound chamber. A high frequency tweeter provides brilliant highs without harshness. By carefully fine tuning and matching these components, Ibanez has achieved the first compact acoustic amplifier that offers the natural tone and elegance of a larger acoustic amplification system.

TROUBADOUR 25 DX FRONT PANEL



MICROPHONE section (A) - Both 1/4" phone jack and an XLR microphone input are provided with **VOLUME** control.

GUITAR section (B) - Specially voiced for acoustic guitar. The **BASS** and **TREBLE** controls are for smooth sound and tonal adjustment. The **MIDDLE** control is parametric **EQ** with adjustable **FREQ.** and **LEVEL**, which can be used for feedback and rumble reduction. **EQUALIZATION** is available on the **GUITAR** input only.

CHORUS section (C) - A shimmering onboard chorus with **SPEED** control adds a lushness and depth that can be used as a "doubling" effect to create 12-string guitar sounds from a standard 6 string instruments. The chorus effect is available on the **GUITAR** input only.

REVERB (D) section - Adds a rich and natural ambient to both guitar and voice.

TA25DX SPECIFICATIONS

Output Power:	25W
Speakers:	1 x 10" Ibanez original speaker PJ30A 1 x Tweeter
Cabinet:	Closed back with tuned port type
MICROPHONE Inputs:	XLR Jack - Balanced 1/4" Phone Jack - Balanced/Unbalanced
EQUALIZATION:	Active 3 band EQ 75Hz +/- 15dB
BASS:	400Hz - 2kHz +/- 15 dB Parametric
TREBLE:	5.6 kHz +/- 15 dB
CHORUS:	With SPEED Control
REVERB:	Spring reverb with LEVEL Control
Size:	426 x 442 x 230 (mm)

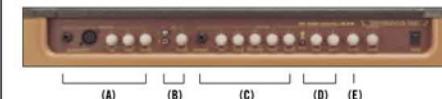


Model : Troubadour 225 DX

- 50Watt (25+25) stereo amp is capable to produce warm lows and crystal highs of natural acoustic sound for small gig.
- Stereo chorus with speed and depth control for the wide spread and thick sound in stereo.
- Microphone Inputs and Aux Input allow "sing and play along with tape or drum machine".

The Troubadour 225 DX acoustic guitar amplifier offers a more dynamic acoustic guitar sound. The 50-Watt power section provides ample power for small venue performances. The Troubadour 225 DX features two newly designed 10" PJ30A2 speakers which reproduce warm lows, and two tweeters that produce crystal clear highs. With the chorus effect enabled, the sound spreads out in a wide stereo spectrum. The Troubadour 225 DX also offers microphone inputs and an auxiliary input enabling "sing and play" capability plus the option to jam along with a CD, tape deck or drum machine. The Troubadour 225 DX is the perfect amp for the player looking for an acoustic guitar amplifier that has a natural, acoustic guitar sound for live performance.

TROUBADOUR 225 DX FRONT PANEL



MICROPHONE section (A) - Both 1/4" phone jack and XLR mic input are provided with dedicated **TREBLE** and **LOW** controls enabling separate **EQ** adjustments for each input.

AUX section (B) provides the capability to jam along with pre-recorded music, a drum machine or sequenced sound modules.

INSTRUMENT section (C) is specifically voiced for acoustic guitar. The **BASS** and **TREBLE** controls enable adjustment of the acoustic sound for warmer lows or more sparkling highs if required. The **MIDDLE** control is a parametric **EQ** with adjustable **FREQUENCY** and **MIDDLE** level, which provides effective feedback and rumble reduction.

CHORUS section (D) has **SPEED** and **DEPTH** controls to create many different types of chorus effects. When not using the **EFFECT RETURN** jack, the inverted chorus sound is fed to one speaker while the non-inverted signal is fed to the other speaker - thus creating a wide stereo separation. The chorus effect is available on the **INSTRUMENT** input only.

REVERB (E) provides a rich and natural ambient spring reverb sound for both channels.

TA225DX SPECIFICATIONS

Output Power:	50W (25W + 25W)
Speakers:	2 x 10" Ibanez Original Speaker PJ30A-2 2 x Tweeter
Cabinet:	Closed back with tuned port type
MICROPHONE Inputs:	XLR Jack - Balanced 1/4" Phone Jack - Balanced/Unbalanced
AUX Input :	RCA Jacks
EQUALIZATION:	Active 3 band EQ 75Hz +/- 15dB
BASS:	400Hz - 2kHz +/- 15 dB Parametric
TREBLE:	5.6 kHz +/- 15 dB
CHORUS:	SPEED Control DEPTH Control
REVERB:	Spring reverb with LEVEL Control
EFFECT SEND/RETURN:	1/4" jacks
Size:	710 x 490 x 260 (mm)

Ibanez

URBAN ACOUSTICS

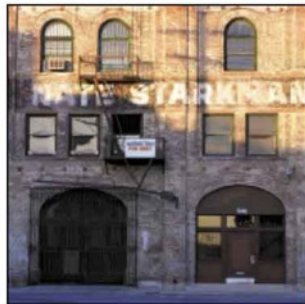
Throughout the history of the instrument, the acoustic guitar has been viewed as a marvelous example of traditional musical instrument craftsmanship exhibiting fine woods and other natural materials.

This image, combined with the amazing timbre, tone and versatility of the traditional acoustic guitar, has made the instrument a key voice in many genres of music - including country, folk and rock.

At Ibanez, our goal has always been to combine traditional values with contemporary production techniques and improved design concepts - enabling us to offer acoustic guitars with more functionality, better playability, ergonomically designed body shapes and most importantly, an original sound.

With the Ibanez Urban Acoustic guitars, we believe we have achieved this goal.

With every guitar in the Ibanez Urban Acoustic line, you will find hints of old world tradition and original Ibanez design concepts. Combined, our respect for tradition and innovative approach to the modern guitar truly allows today's guitarist to enjoy the best of both worlds.



URBAN ACOUSTIC ARTISTS



ANDY TIMMONS



PAUL GILBERT



JOHN 5

MARILYN MANSON



WES BORLAND

LIMP BIZKIT



DINO CAZARES

FEAR FACTORY



JOHN PETRUCCI

DREAM THEATER



Ibanez

©Copyright 1999, Printed in JAPAN. All specifications subject to change without notice.

Ibanez Guitars are Sold and Serviced by

SEP99248