

# ELECTRIC GUITARS

- P.2 JEM-JR Steve Vai signature
- P.3 PGM3 Paul Gilbert signature
- P.4-5 GRG / Jumpstart
- P.6-7 GXR / GSZ
- P.8-9 GAX / GSA / GRX
- P.10-11 GSR / GAXB



# BASSES

# 2005





# STEVE VAI

*signature model*

Our relationship with Steve Vai goes all the way back to the days of Steve's legendary stint with David Lee Roth's band. Steve's playing caused a sensation with guitar players all over the world then, and continues to do so today, with his extraordinary talent and vision as a player and as a designer of guitars. The JEM JR has all the fundamental components of the classic JEM, including its unique "Monkey Grip," but at an affordable price that puts the JEM within the reach of players at any level.

## JEM-JR

**neck**  
3 pc Maple  
**body**  
Basswood  
**bridge**  
ILT1  
**neck pu**  
INF1 (H)  
**middle pu**  
INF51 (S)  
**bridge pu**  
INF2 (H)  
**controls**  
1 volume, 1 tone  
**colors**  
BK, WH



## PGM3

**neck**  
3 pc Maple  
**body**  
Basswood  
**bridge**  
ILT1  
**neck pu**  
INF1 (H)  
**middle pu**  
INF51 (S)  
**bridge pu**  
INF2 (H)  
**controls**  
1 volume  
**colors**  
JB, WH



# PAUL GILBERT

*signature model*

Paul Gilbert was discovered by talent scout Mike Varney when Paul was only 15 years old. By then, Paul had already developed his blazing style of playing which would be featured on a number of platinum albums, all with the help of an Ibanez guitar. With the development of the PGM, Ibanez encapsulated all of the features that Paul needed in a guitar. The PGM3 carries on the proud tradition of the PGM series complete with the signature F-holes and the reverse headstock that Paul prefers all at a price that a beginner can afford.







GRG370FM TB

## GRG370FM

**neck**  
Maple  
**body**  
Flamed Maple top/ Basswood  
**bridge**  
Edge III  
**neck pu**  
STD-H1 (H)  
**middle pu**  
STD-S4 (S)  
**bridge pu**  
STD-H2 (H)  
**controls**  
1 volume, 1 tone  
**colors**  
color: AL, TB

GRG370FM AL



## GRG150

**neck**  
Maple  
**body**  
Basswood  
**bridge**  
FAT10  
**neck pu**  
STD-H1 (H)  
**middle pu**  
STD-S4 (S)  
**bridge pu**  
STD-H2 (H)  
**controls**  
1 volume, 1 tone  
**colors**  
color: BKN, CA

GRG150 CA

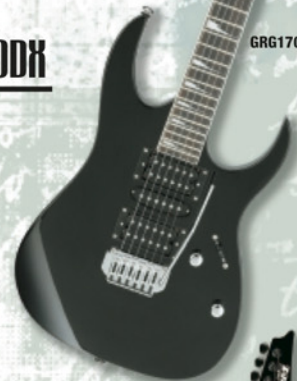


GRG150 BKN

## GRG170DX

**neck**  
Maple  
**body**  
Basswood  
**bridge**  
FAT10  
**neck pu**  
STD-H1 (H)  
**middle pu**  
STD-S4 (S)  
**bridge pu**  
STD-H2 (H)  
**controls**  
1 volume, 1 tone  
**colors**  
color: BKN, JB

GRG170DX BKN



# GRG

There is a reason why the RG is one of the most iconic guitars in hard rock and metal today. The RG is both extreme and sophisticated in design, but most importantly plays and sounds like no other guitar available today. The GRG series guitars feature the same basic specs as the RG, including a fast, 24 fret neck with jumbo frets, sharp edge contours, high output humbucking pickups and rock solid tremolo units. And the best part is the low price tag. The GRG370FM now features the new Edge III tremolo based on the original Edge tremolo. Eighteen years after its introduction, the RG is still as cutting edge now, as it was back then.

The newly designed Edge III tremolo on GRG370FM allows low profile setup for easy playability because of its own structure.



GRG270DX SV



GRG270DX NM

## GRG270DX

**neck**  
Maple  
**body**  
Basswood  
**bridge**  
ILT1  
**neck pu**  
STD-H1 (H)  
**middle pu**  
STD-S4 (S)  
**bridge pu**  
STD-H2 (H)  
**controls**  
1 volume, 1 tone  
**colors**  
color: NM, SV

## Jumpstart packages

The GRG270J Jumpstart package is a package like no other. The Jumpstart package features the GRG270 with double locking tremolo and just about everything else you'll need to get started. The GRG270J Jumpstart package will give you a head start to all of the concert stages around the world.

- GRG270 guitar
- Amplifier
- Electric tuner
- Gig bag
- Guitar strap
- Picks
- Accessories pouch



## GRG270

**neck**  
Maple  
**body**  
Basswood  
**bridge**  
ILT1  
**neck pu**  
STD-H1 (H)  
**middle pu**  
STD-S4 (S)  
**bridge pu**  
STD-H2 (H)  
**controls**  
1 volume, 1 tone  
**colors**  
color: BKN, CA, JB

GRG270 JB





# GXR

The original Radius guitar was introduced in 1987 as a 540R. This now legendary guitar was a radically engineered, 3 dimensional guitar, designed from a purely ergonomic point of view. The GXR series continues in the great tradition of the Radius model, by providing the ultimate in comfort and playability in a guitar. In addition, the H-S-H pickup configuration and Edge III tremolo provides both versatile tone and rock solid tuning in any playing situation.



GXR370 CRB



The newly designed Edge III tremolo on GXR370 allows low profile setup for easy playability because of its own structure.

## GXR370

**neck**  
Maple  
**body**  
Basswood  
**bridge**  
Edge III  
**neck pu**  
STD-H1 (H)  
**middle pu**  
STD-S4 (S)  
**bridge pu**  
STD-H2 (H)  
**controls**  
1 volume, 1 tone  
**colors**  
color: CRB, SBB, SVB



GXR370 SBB



GXR370 SVB

# GSZ

The latest addition to our line-up comes in the form of the GSZ120. Borrowing its body outline from the seminal S series guitar, adding a bit more mass to the body and rounding it off with German curves, make the guitar a new classic for today's musicians. The two humbucker pickup configuration, combined with the Full Tune II Bridge, provides fat tone and great tuning stability.

## GSZ120

**neck**  
Maple  
**body**  
Basswood  
**bridge**  
Full Tune II  
**neck pu**  
STD-H1 (H)  
**bridge pu**  
STD-H2 (H)  
**controls**  
2 volumes, 1 tone  
**colors**  
color: BKN, SV



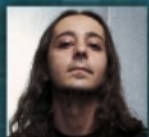
GSZ120 BKN



GSZ120 SV



Andy Timmons



Daron Malakian (System of a down)



Joe Satriani



Marty Friedman



Mick Thomson (SLIPKNOT)



Mike Mushok (Staind)



Head (Korn)



Munky (Korn)



Noodles (The Offspring)



Terry Balsamo (Evanescence)



Fieldy (Korn)



Greg K (The Offspring)



# GAX

For classic, chunky hard rock tones, you can't do any better than the GAX. With its double cutaway, crystal cut basswood body, double humbucker set-up and lightweight body, the GAX is also the perfect guitar for the stage. The GAX70 is the standard GAX, featuring a 2 volume and 2 tone with toggle switch control set-up and a Full Tune II bridge. The GAX30 features a 1 volume, 1 tone, a 3 way selector switch set-up, a simple, fixed bridge and the distinctive GAX30 pickguard.

## GAX70

**neck**  
Maple  
**body**  
Basswood  
**bridge**  
Full Tune II  
**neck pu**  
STD-H1 (H)  
**bridge pu**  
STD-H2 (H)  
**controls**  
2 volumes, 2 tones  
**colors**  
color: BKN, TR



GAX70 TR

## GAX30

**neck**  
Maple  
**body**  
Basswood  
**bridge**  
Fixed  
**neck pu**  
STD-H1 (H)  
**bridge pu**  
STD-H2 (H)  
**controls**  
1 volume, 1 tone  
**colors**  
color: BKN, TR



GAX30 BKN

GAX70 BKN

# GSA

The GSA is the closest thing to an all around guitar in our lineup. It would be equally at home at a Top 40 cover gig, or an extreme metal shred fest. With its well-balanced arched top body, 22 frets, S-S-H pickup configuration and original SAT10 synchronized bridge, the GSA can produce just about any type of sound for any type of music. Think you need a bunch of guitars to cover all the bases? Think again.



GSA60 JB

GSA60 BKN

## GSA60

**neck**  
Maple  
**body**  
Basswood  
**bridge**  
SAT10  
**neck pu**  
STD-S3 (S)  
**middle pu**  
STD-S4 (S)  
**bridge pu**  
STD-H2 (H)  
**controls**  
1 volume, 1 tone  
**colors**  
color: BKN, BT, JB

GSA60 BT

# GRX

The GRX20 is not your ordinary beginner's guitar. The contoured double-cutaway body allows for extreme access to the upper frets, making those climbs to the 22nd fret graceful and fluid. The two humbucker set-up provides fat tone for both rhythm and lead. The black pickguard and matching black headstock make the GRX20 stand out in a sea of wanna-bes.



GRX20 JB

GRX20 BKN

## GRX20

**neck**  
Maple  
**body**  
Basswood  
**bridge**  
FAT6  
**neck pu**  
STD-H1 (H)  
**bridge pu**  
STD-H2 (H)  
**controls**  
1 volume, 1 tone  
**colors**  
color: BKN, JB

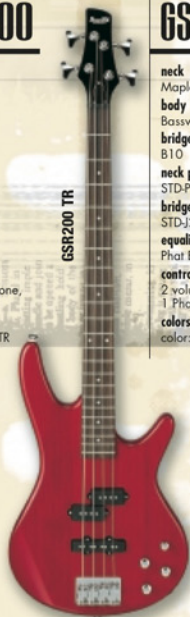


# GSR

The Ibanez Soundgear is recognized as one of the best selling electric basses in history. There are several reasons why. The sleek, streamlined body, its tonal versatility, and famous thin neck all contribute to its appeal. But the fact of the matter is, regardless of the music you play, Soundgear stands for quality. All GSR basses are affordably priced, yet have the superior quality that the Soundgear name stands for. The GSR390 features a 2 band EQ and is available as a 4, 5 or 6 string. The GSR200 features the Ibanez original "Phat" bass booster and is available as a 4 and 5 string.

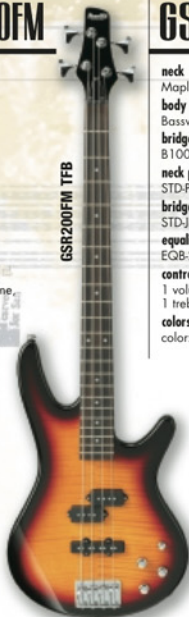
## GSR200

**neck**  
Maple  
**body**  
Basswood  
**bridge**  
B10  
**neck pu**  
STD-P2  
**bridge pu**  
STD-J2  
**equaliser**  
Phat EQ  
**controls**  
2 volumes, 1 tone,  
1 Phat control  
**colors**  
color: BK, JB, TR



## GSR200FM

**neck**  
Maple  
**body**  
Basswood  
**bridge**  
B10  
**neck pu**  
STD-P2  
**bridge pu**  
STD-J2  
**equaliser**  
Phat EQ  
**controls**  
2 volumes, 1 tone,  
1 Phat control  
**colors**  
color: TBS, TFB



## GSR390

**neck**  
Maple  
**body**  
Basswood  
**bridge**  
B100  
**neck pu**  
STD-P1  
**bridge pu**  
STD-J1  
**equaliser**  
EQB-2C 2-band eq  
**controls**  
1 volume, 1 balancer,  
1 treble/bass (top/bottom)  
**colors**  
color: WN



GSR200FM TBS



The GSR390/395/396 all come equipped with the EQB-2C 2-band active EQ in a stacked configuration for tremendous tonal versatility and ease of use.



The "Phat" bass boost on the GSR200(FM)/205 allows for even fatter lows and increased volume.



The GSR390/395/396 all come standard with B100/B105/B106 bridges which allow for quick string changes and easy string height adjustment. Simply hook the ball end into the base plate and you're ready to go.



The B10/B15 bridges produce the warm sustain that most bass players covet. As with the B100, string height adjustment couldn't be any easier.

## GSR396

**neck**  
Maple  
**body**  
Basswood  
**bridge**  
B106  
**neck pu**  
STD-N6  
**bridge pu**  
STD-B6  
**equaliser**  
EQB-2C 2-band eq  
**controls**  
1 volume, 1 balancer,  
1 treble/bass (top/bottom)  
**colors**  
color: WN



GSR396 WN

## GSR205

**neck**  
Maple  
**body**  
Basswood  
**bridge**  
B15  
**neck pu**  
STD-J51  
**bridge pu**  
STD-J52  
**equaliser**  
Phat EQ  
**controls**  
2 volumes, 1 tone,  
1 Phat control  
**colors**  
color: BK



GSR205 BK

GSR205 WN

## GSR395

**neck**  
Maple  
**body**  
Basswood  
**bridge**  
B105  
**neck pu**  
STD-N5  
**bridge pu**  
STD-B5  
**equaliser**  
EQB-2C 2-band eq  
**controls**  
1 volume, 1 balancer,  
1 treble/bass (top/bottom)  
**colors**  
color: WN

# GAXB

How simple can a bass be? The Ibanez GAXB has just one pickup and one volume control. Even the tone control was eliminated and substituted by a toggle switch, which provides 3 distinctive tones. With its short 32" scale neck, the GAXB is the perfect bass for beginners, and especially younger players. It's simple, affordable and best of all, loads of fun to play.

## GAXB150

**neck**  
Maple  
**body**  
Basswood  
**bridge**  
B10  
**pu**  
STD-N4  
**controls**  
3 way tone character toggle switch,  
1 volume  
**colors**  
color: BK



GAXB150



The simple one volume / 3 way tone switch set-up on the GAXB150 makes it easier for beginners to dial in 3 great tones right away.

# Artist Roster

## Guitars

Keith Aazami  
Dave Aguilera  
Russell Ali  
Lance Army  
Chris Arp  
Matt Bachand  
Sheryl Bailey  
Rob Balducci  
Terry Balsamo  
Jackson Benge  
George Benson  
Shane Blay  
Chris Broderick  
Bronson  
Norman Brown  
Glenn Butt  
Chris Camarzi  
Erik Carlsson  
Noah Carpenter  
Dino Cazares  
Audley Chisholm  
John Conley  
Rusty Cooley  
Fran Cosmo  
Jim Davies  
Jason DeCosta  
Todd Deguchi  
Rob DeHaven  
Brad Delson  
Mike DeWolf  
Dominic  
Doug Doppler  
Fletcher Dragge  
Ed Faris  
Mardy Ferber  
Jon Finn  
David Fierczynski  
David Fransson  
Marty Friedman  
Fuzz  
Adriel Garcia  
Rocky George  
Paul Gilbert  
Chad Ginsburg  
Gravy  
Billy Grazidei  
Jon Greasley  
Marten Hagstrom  
Paul Hanson  
Head  
Oli Herbert  
Dexter Holland  
Steve Holt  
Joel Johnson  
Rob Johnson  
Jon Kila  
Kirk Kohlsitz  
Eric Krane  
John LaMacchia  
Pete Lesperance

Jani Liimatainen  
Logan  
Daron Malakian  
Tarver Marsh  
Andy Martin  
David Marley  
Matt Maters  
Buz McGrath  
James McIlroy  
Pat Metheny  
Steve Miloszewski  
Larry Mitchell  
Munky  
Mike Mushok  
Noodles  
Ramon Ortiz  
Kevin Palmer  
Rob Patterson  
Lukas Previn  
Josh Rand  
Paul Raymond  
Eddie Rendini  
Pete Ricci  
Steve Richards  
Matt Roberts  
Omar Rodriguez  
Tony Rothbough  
Eric Sands  
Joe Satriani  
Sathy  
Al Schnier  
John Scofield  
Arthur Sney  
Mike Shinoda  
Dwight Sills  
Barry Stock  
Ken Susi  
Steve Swanson  
Corey Taylor  
Derek Taylor  
Mick Thomson  
Fredrik Thordendal  
Andy Timmons  
Greg Tremell  
Greg Tribbett  
Craig Tyler  
Dave Ulrich  
Steve Vai  
Paul Waggoner  
Dustin Waring  
Dave Weiner  
David Williams

Sonata Arctica, Altaria  
U.P.O.  
System Of A Down  
Good Luck Travesty  
Jill Scott, Session  
Dead To Fall  
Unearth  
Cradle of Filth  
City Sleeps  
Korn  
Staind  
The Offspring  
Anika  
TRUSTCompany  
Doctor Z  
Stone Sour  
UFO  
Cold  
Lo-Pro  
Taproot  
3 Doors Down  
The Mars Volta  
Byzantine  
Unida / House of Broken Promises  
Linkin Park  
Three Days Grace  
Unearth  
Six Feet Under  
Stone Sour  
Slipknot  
Mushgogah  
Olive Newton-John, LeAnn Rimes  
12 Stimes  
Mudvayne  
Crazy Town  
Between The Buried And Me  
Between The Buried And Me  
Steve Vai  
Michael Jackson  
Dogma  
Alejandro Silva Power Cuarteto  
Pratt Music Group  
Bangklowe  
Fahrenheit  
PAS  
Bogey Dodge  
Asonne Waion  
Cekelat  
2X

Dr. Sirborn Muntarbhorn, JD  
KOB  
Eddie Makaronand  
Jirasak Panpurn  
Pay  
Anel Paz  
Angelo Pierattini  
Ritz  
Ramy Saied  
King Shah  
Alejandro Silva  
Ian  
Lucas Yaksic  
Xiao Long Zhu

Kati Bond  
Independent  
Autobahn  
Mad Catz  
BIP  
Independent  
Weichate  
Metalasia  
Riding The Silence  
Metalasia  
Independent  
Dezember, Zanax  
Dogma  
Tongue

## Basses

Chris Adams  
Jeff Beres  
Adam Blackstone  
Chad Bowcock  
Nelson Braxton  
Terry Butler  
Mark Clayden  
Creaure  
Mike D Antonio  
Matt Dots  
Rob Derhak  
Barry Danaghy  
Shawn Economaki  
Fieldy  
Matt Fisher  
Bill Gial  
Roland Guerin  
Gustaf Hiilm  
Tara Johnson  
Percy Jones  
Greg K.  
Carol Kaye  
Joe Keiser  
Dan Kurtz  
Jim Loughlin  
Robbie Merrill  
Doug Miller  
Clint Norris  
Rufus Philpot  
Paul Romanko  
Daron Stery  
Hannah Texco  
Gerald Weasley  
Pete Way  
Gary Willis  
Doug Wimbish  
Mark Young  
Zoltan  
Byzantine  
Sister Hazel  
Jill Scott, Music, The A.K.A.'s  
The Braxton Brothers  
Six Feet Under  
Deady  
Killswitch Engage  
All That Remains  
moe.  
Harem Scarem  
Stone Sour  
Korn  
Eyes of Fire  
Kingdom of Snares  
Marcus Roberts Trio, Solo Artist  
Martyr A.D.  
The Offspring  
Skinless  
The New Deal  
moe.  
Godsmack  
Crazy Town  
As I Lay Dying  
Planet X, Down to the Bone  
Shadows Fall  
Justrinace  
UFO, Waysted  
36 Crazyfists  
Tribal Tech  
Head Fake, Mos Def, Living Colour  
(hed) planet earth  
U.P.O.  
Morning Surfer  
The Sun  
Independent  
Slut Machine  
Crescendo, Pause  
Cokelat

## Finishes



All colors shown are as close as four-color printing will allow.  
All specifications are subject to change without notice.

©2004 Printed in Japan DEC04731