

BTB

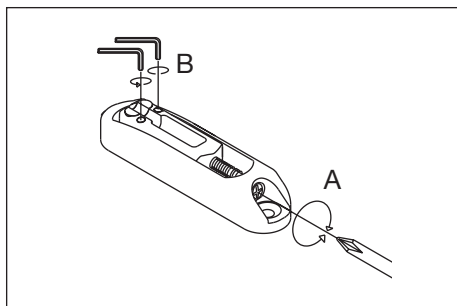
A: Intonation adjustment screw

B: Saddle height adjustment screw (MR2/MR5: 1.5mm hex key wrench , MR4: 2.0mm hex key wrench)

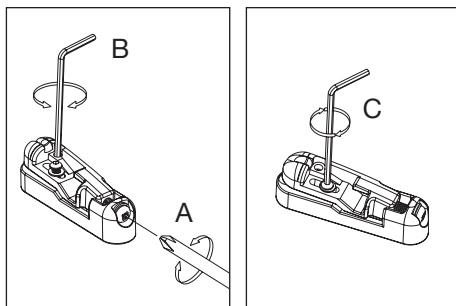
C: Saddle lock screw (2.0mm hex key wrench)

D: Slid-able saddle lock screw (1.5mm hex key wrench)

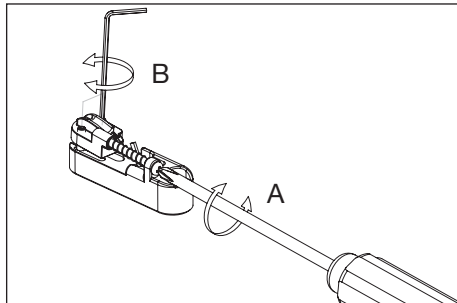
MR2



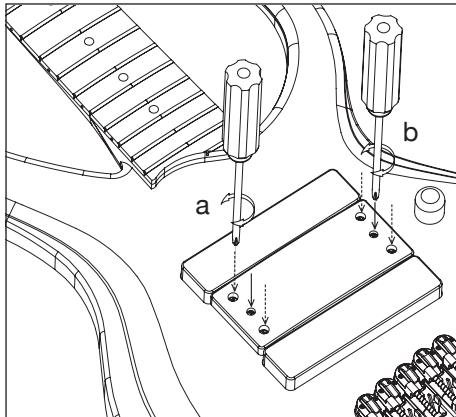
MR4



MR5



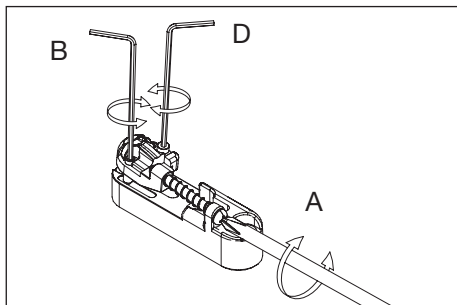
Finger Ramp (BTB845V/846V)



a: Ramp height adjustment screw

b: Ramp lock screw

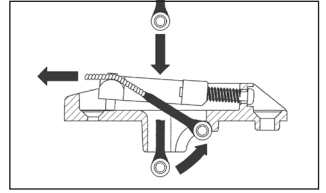
MR5S



STRING REPLACEMENT

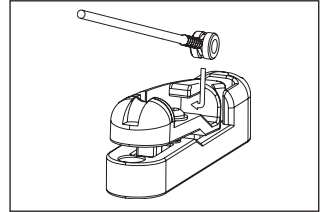
MR2

Hook the ball end below the string catch at the rear of the bridge.



MR4

Slide the ball end into the ball end pocket.



MR5/MR5S

Hook the ball end below the string catch at the rear of the bridge.

