

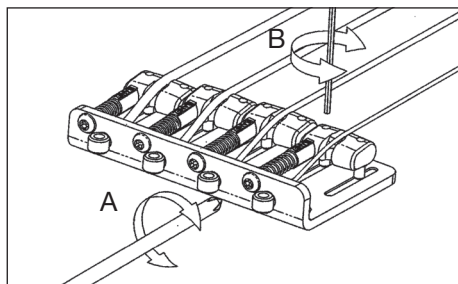
A: Intonation adjustment screw

B: Saddle height adjustment screw (B10/B15/B16, B120/B125/B126, B300/B305/B306, MR4: 2.0mm hex key wrench) (B500/B505/B506, MR5, MR5S: 1.5mm hex key wrench)

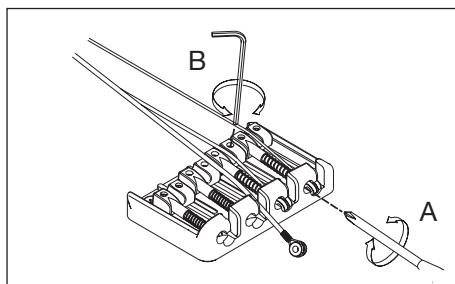
C: Saddle lock screw (2.0mm hex key wrench)

D: Slid-able saddle lock screw (1.5mm hex key wrench)

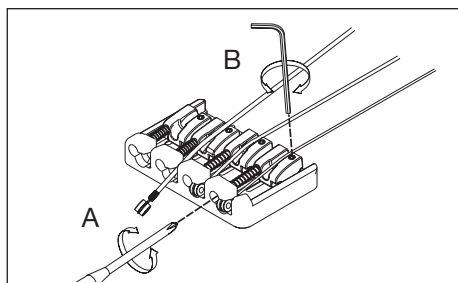
## B10/B15/B16



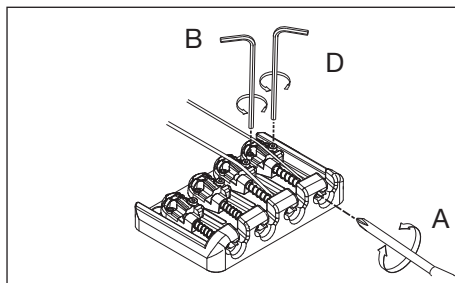
## B120/B125/B126



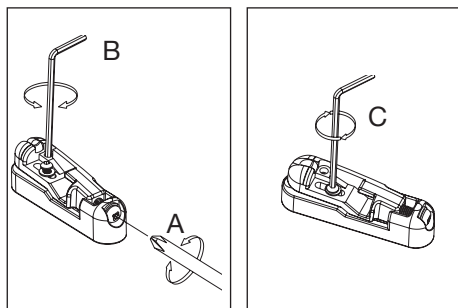
## B300/B305/B306



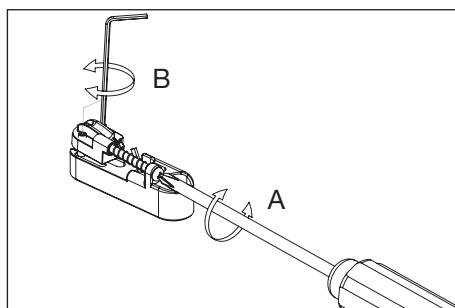
## B500/B505/B506



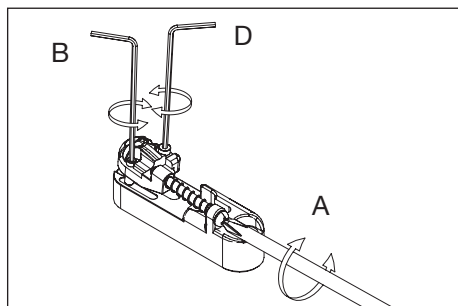
## MR4



## MR5



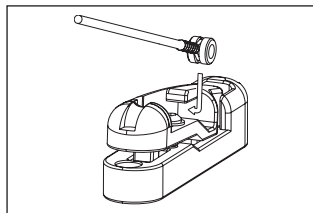
## MR5S



## STRING REPLACEMENT

### MR4

Slide the ball end into the ball end pocket.



### MR5/MR5S

Hook the ball end below the string catch at the rear of the bridge.

