

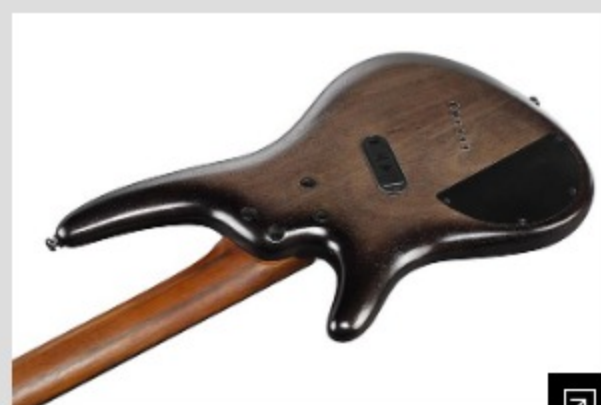
SR



COLOR VARIATION :



BLL : Black Stained Burst Low Gloss



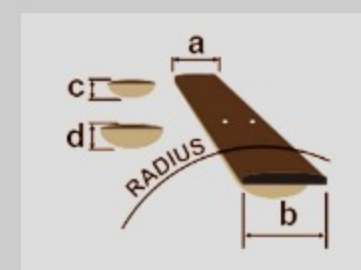
SPEC

SPECS

neck type	SRC6 / 5pc Jatoba/Walnut neck
top/back/body	Okoume body
fretboard	Rosewood fretboard / Abalone Step off-set dot inlay
fret	Medium frets
bridge	Mono-rail bridge
string space	10.8mm
neck pickup	Bartolini® BH2 neck pickup (Passive)
bridge pickup	Bartolini® BH2 bridge pickup (Passive)
equaliser	Ibanez Custom Electronics 3-band EQ w/EQ bypass switch (passive tone control on treble pot), 3-way Mid frequency switch
factory tuning	1E,2B,3G,4D,5A,6E
strings	D'Addario® EXL156
string gauge	.024/.034/.044/.056/.072/.084
hardware color	Cosmo black

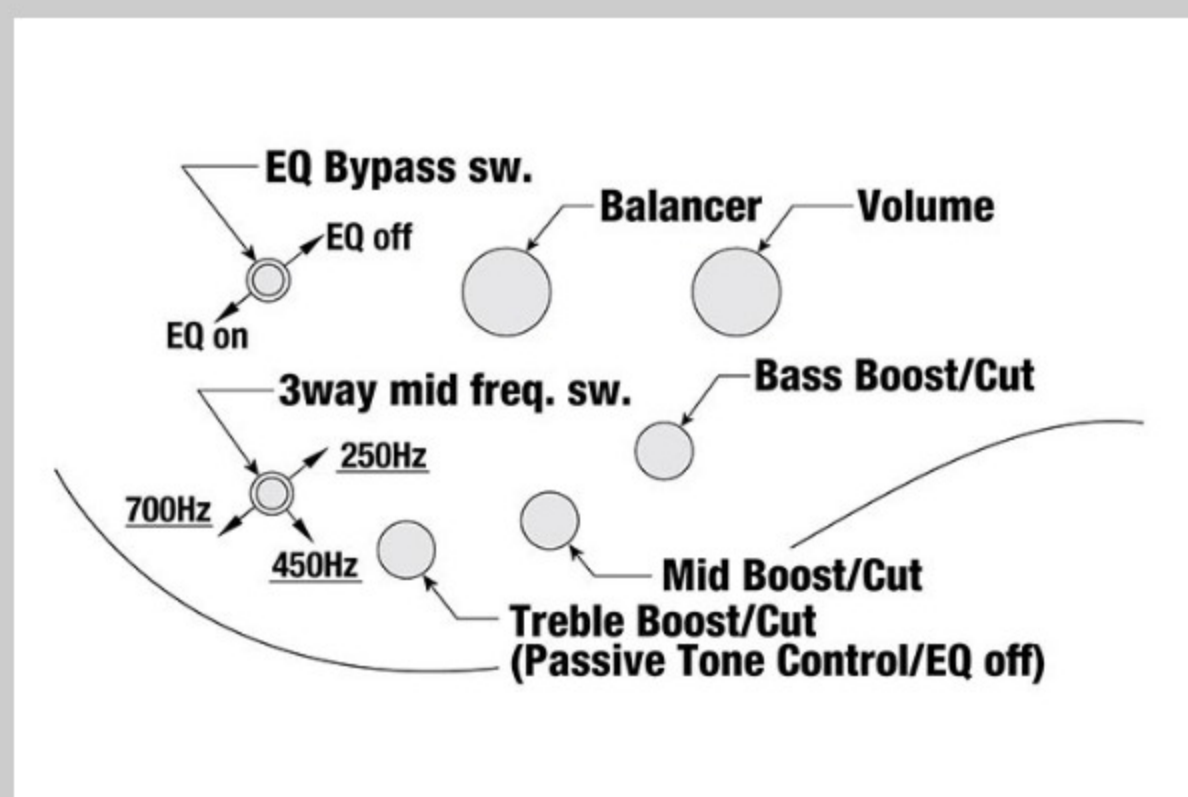
NECK DIMENSIONS

Scale :	762mm/30" - 724mm/28.5"
a : Width	42mm at NUT
b : Width	58mm at 22F
c : Thickness	19.5mm at 1F
d : Thickness	21.5mm at 12F
Radius :	400mmR



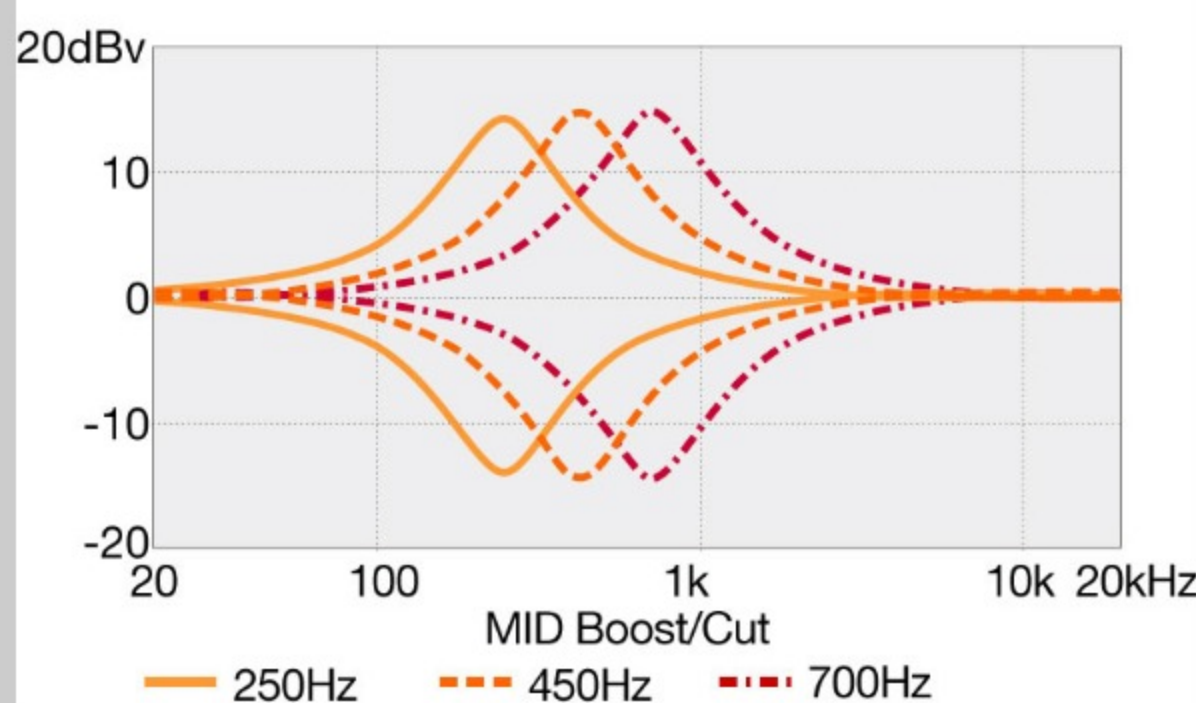
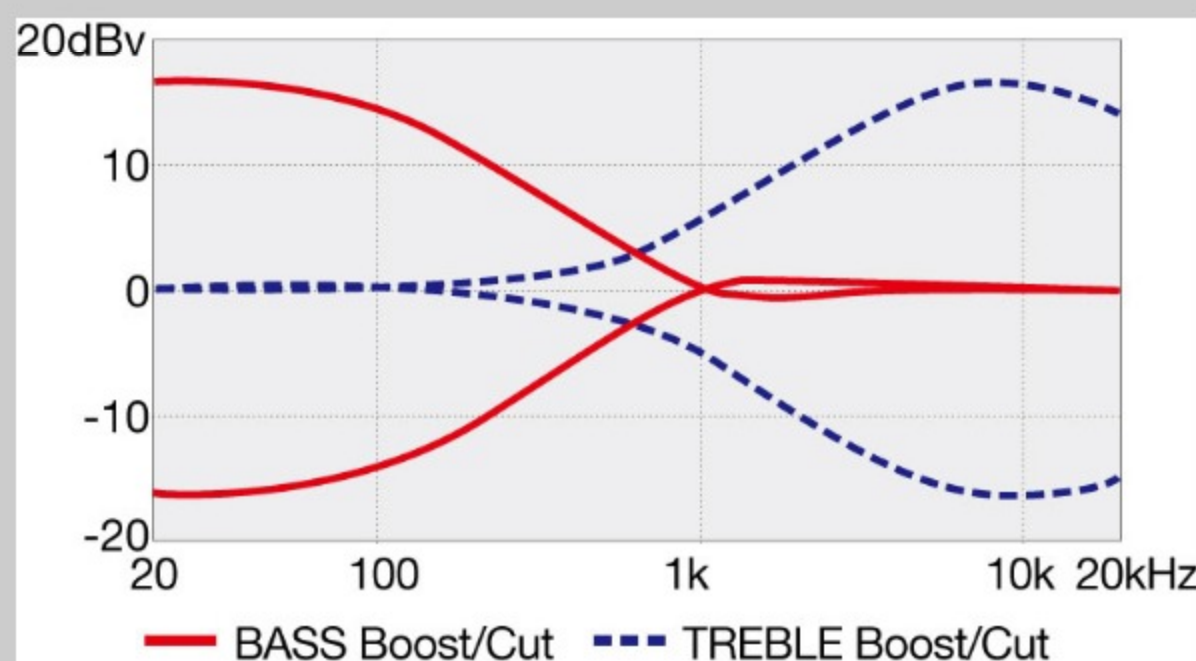
DESCRIPTION +

CONTROLS



DESCRIPTION +

FREQUENCY RESPONSE



DESCRIPTION +

OTHER FEATURES

Ibanez machine heads