

Fieldstar Marching Carrier

INSTRUCTION MANUAL

Thank you for purchasing TAMA Marching Drum Carriers. To ensure safe and efficient use of this product, please read through this manual before beginning assembly. Please store this manual in a convenient place for future reference.

Part Names

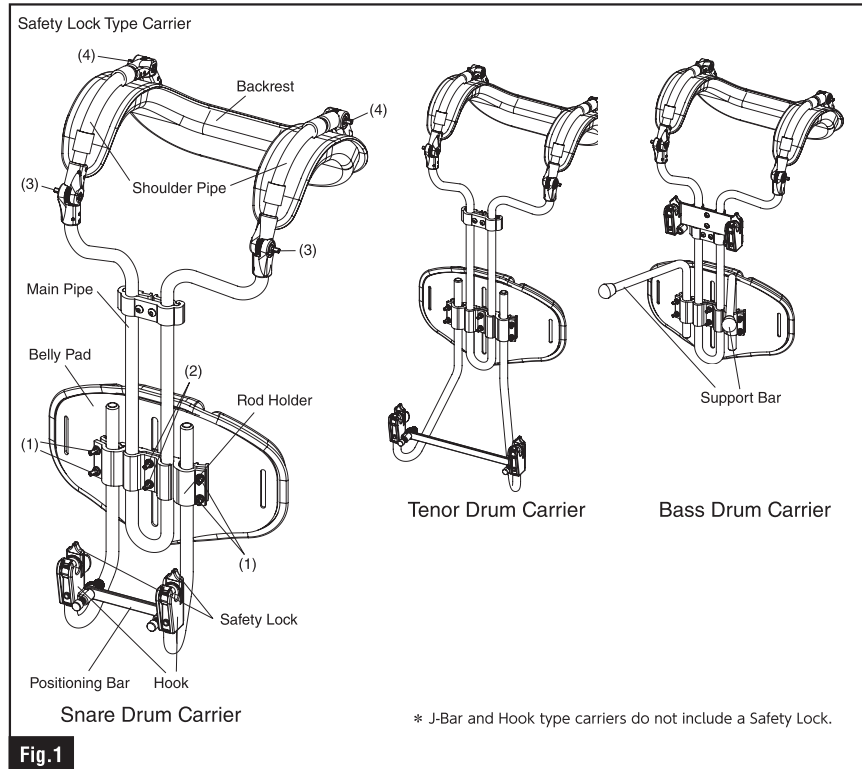


Fig. 1

Adjustment

J-Bar Mount Installation (Fig. 1)

The J-Bar comes installed backwards. Use a tuning key to loosen the four square head bolts (1) on the rod holder, remove the J-Bar, then install it in the direction as shown in Fig. 1.

Shoulder & Backrest Adjustment (Fig. 1)

To adjust the shoulder pads & backrest, loosen the square head bolts (3) and (4), respectively. Once the desired setting is reached, firmly tighten the square head bolts in place. Do not overtighten the bolts, as this may lead to failure.

Positioning Bar Adjustment (Fig. 2)

First, match the J-Bar width to the snare and tenor attachments by loosening the square head bolts (1) in Fig. 1. Once the width position is fixed, tighten the square head bolts to secure the J-Bar in place. Then, as shown in Fig. 2, insert the recessed part of the positioning bar over the bolt and tighten the nut to fix it in place.

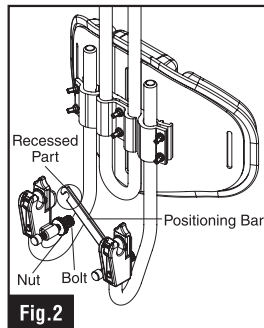


Fig. 2

J-Bar Height Adjustment (Fig. 1)

Loosen the four square head bolts (1) and adjust the J-Bar to the desired height. Once the height is fixed, tighten the square head bolts to secure the J-Bar in place.

Additionally, the pad position can be adjusted by loosening the two square head bolts (2) in the center of the rod holder and sliding the pad up or down, without changing the position of the J-Bar. Once the pad position is fixed, tighten the square head bolts to secure the pad in place. Do not overtighten the bolts, as this may lead to failure.

Safety Lock Mount (Fig. 3)

With the black Safety Lock tab in the upright position, attach the carrier to the drum. Then, turn the black Safety Lock tab down, facing the outward as shown in Fig. 3. When engaged, the Safety Lock prevents the drum from becoming accidentally unhooked from the carrier during use.

To remove the carrier from the drum, simply return the Safety Lock to the upright position. For your safety, always lock the carrier when the drum is in use.

*J-Bar and Hook type carriers do not include a Safety Lock.

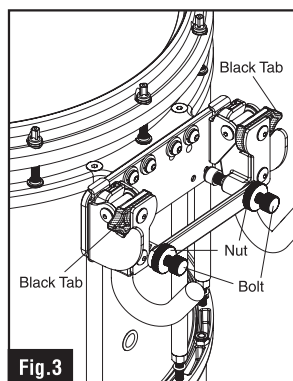


Fig. 3

Drum Angle Adjustment (Fig. 3)

For snares and tenors, the angle of the drum can be adjusted using the nuts and bolts located on the positioning bar. As shown in Fig. 3, first loosen the two nuts and turn the two bolts counterclockwise to tilt the drum forward, away from the player. To tilt the drum inward towards the player, turn the two bolts clockwise. After the desired angle is achieved, tighten the two nuts to secure the bolts in place.

*The angle of the drum cannot be adjusted for bass drum carriers, J-Bar, and Hook type carriers.

Drum Lift Bumper (Fig. 4)

As shown in Fig. 4, the Drum Lift Bumper is designed to keep the drum from hitting the carrier when tilted in the up position. Please note that applying excessive weight and pressure while the drum is in the up position may cause damage.

*J-Bar and Hook type carriers cannot be tilted up.

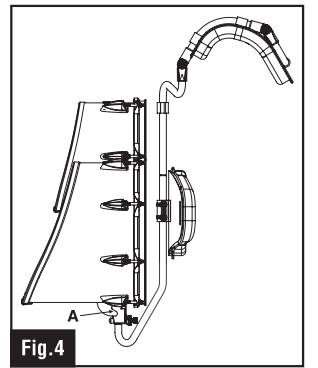


Fig. 4

J-Bar type carrier (Fig. 5)

The tip of the J-Bar is 14mm in diameter and can be used with similar shaped brackets. Insert the tip of the J-Bar into the bracket as shown in Fig. 5.

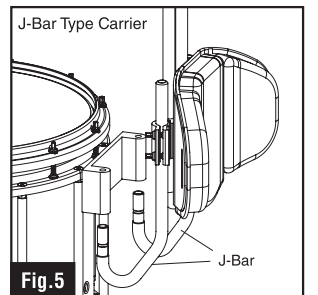


Fig. 5

Two-way Bass Drum Support Bar (Fig. 6)

As shown in Fig. 6, the bass drum support bar position can be changed to accommodate different diameter bass drums. For larger diameter bass drums, make sure to set the support bar to Position 2. If the support bars are set too low while in Position 1, they may hit the player's legs during use.

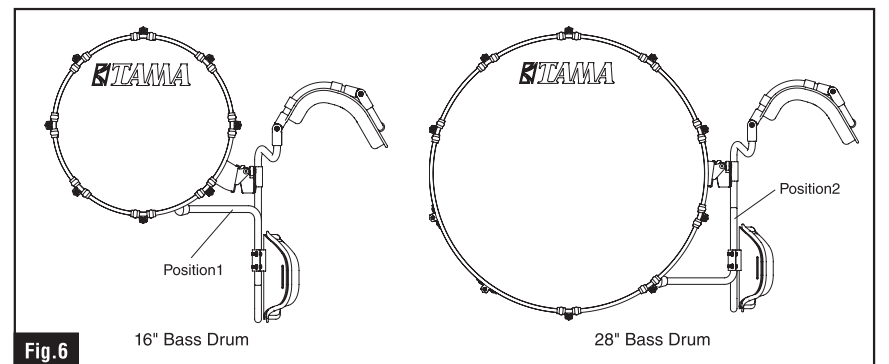


Fig. 6

Hook type carrier (Fig. 7)

The width of the hooks on this carrier can be adjusted between 165mm to 250mm. To make an adjustment, loosen the nut and move the eyebolts to match the hooks on your bass drum. Then, tighten the nut to secure the hook in place.

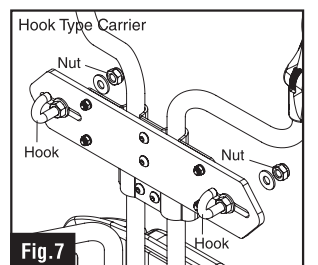


Fig. 7

Caution (Fig. 4, Fig. 8)

When the drums are tilted in the up position, make sure to never put your hands or fingers into the carrier joint, as shown in Fig. 4A/ Fig. 8B. In addition, while set in the up position, always hold the drum in place with your hand to prevent it from falling. Do not adjust the carrier while the drum is attached. This can lead to unexpected accidents such as bodily injury, dropping, or damage. Always remove the drum from the carrier before making any adjustments.

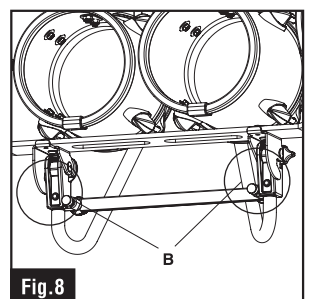


Fig. 8

Maintenance

- When using the product, make sure to check for any loose screws. If found, make sure to tighten and secure them in place.
- Wipe with a soft, dry cloth for daily care. Never use thinner, benzine, etc.
- The shoulder and belly pads can be removed and washed if they become dirty. Replacement pads are available for purchase separately.
- If a part is worn or damaged, it can be replaced. A parts catalog is available on TAMA's official website (<https://www.tama.com/>).

TAMA HOSHINO GAKKI CO., LTD.
<http://www.tama.com/>

This instruction manual was issued in January 2023. Specification and design are subject to change without notice.

TSCFS23A