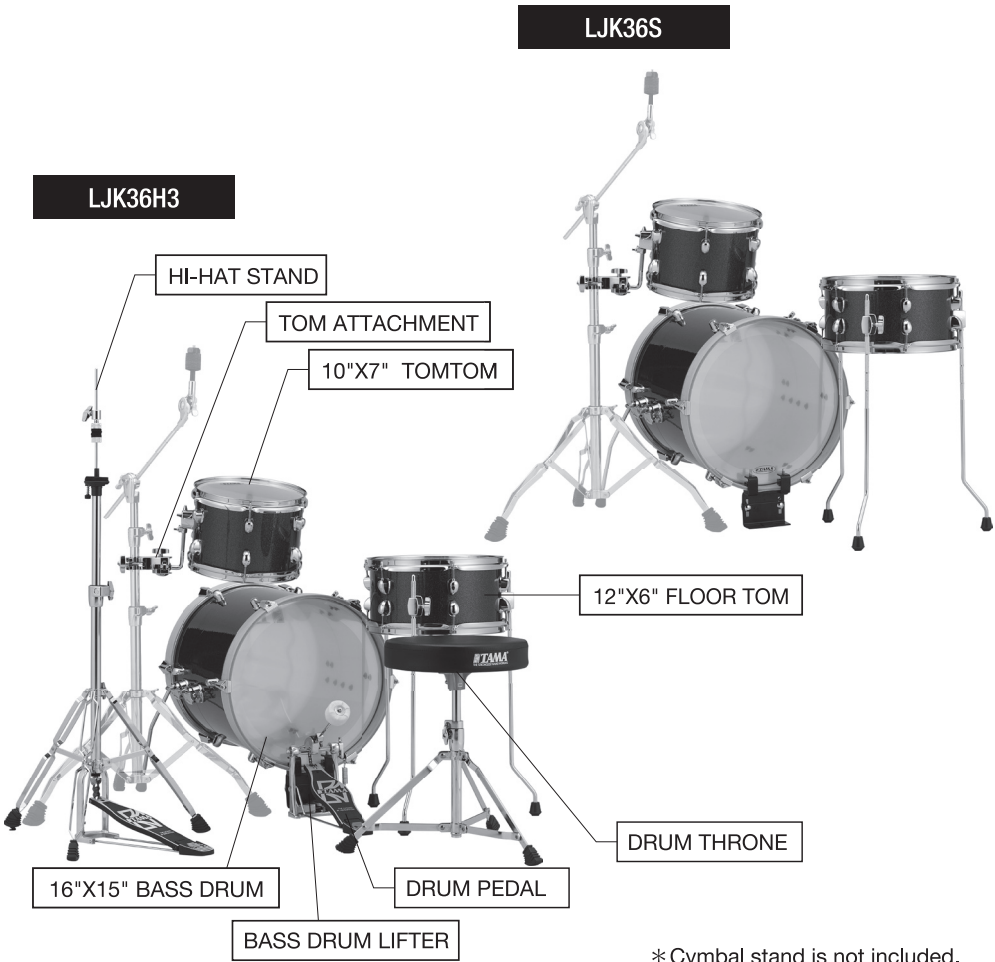


Club-JAM Suitcase

INSTRUCTION MANUAL

Thank you for your purchase of the Club-JAM Suitcase. To ensure the safe and efficient use of this product, please read through this manual before use. Store this manual in a convenient place for future reference.



* Cymbal stand is not included.

Assembly

1. Bass Drum

To assemble the bass drum, attach drum shell A (player's side/deep shell) to drum shell B (front side/shallow shell).

<1-1> Assembling Drum Shell A (batter side)

First, attach the batter head (clear) and grooved bass drum hoop to drum shell A (deep shell). Place the flat surface of the bass drum hoop against the batter head, with the grooved section facing the outward, centered on the bass drum spur brackets. Use the long tension rods and claw hooks to fix the hoop to the shell.

<1-2> Assembling Drum Shell B (resonant side)

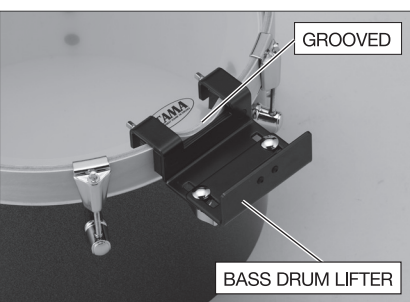
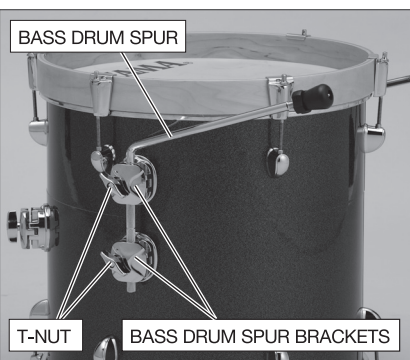
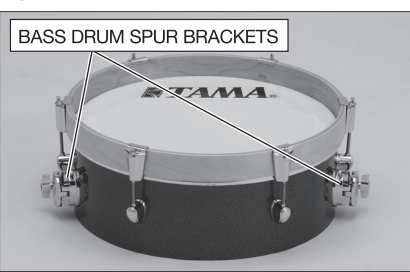
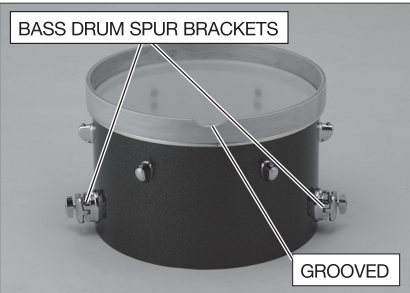
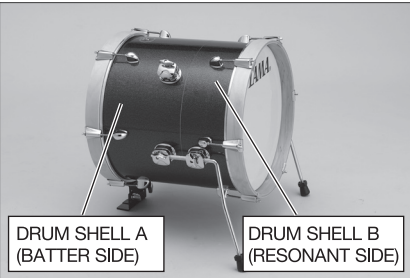
Next, place the resonant head (with TAMA logo) and non-grooved bass drum hoop onto drum shell B (shallow shell). Use the claw hooks and long tension rods to fix the hoop to the shell. Refer to Picture 2 for the TAMA logo placement.

<1-3> Attaching Drum Shell A (batter side) and Drum Shell B (resonant side).

As shown in Picture 3, align the bass drum spur brackets on drum shell A (batter side) and drum shell B (resonant side). Starting with drum shell B, place the bass drum spurs through each bracket and tighten the T-nut to secure the drum shells in place.

<1-4> Assembling the Bass Drum Lifter

Finally, attach the bass drum lifter to the grooved part as shown in Picture 4. Refer to the separate "Bass Drum Lifter Instruction Manual" for proper installation.



2. Floor Tom

<2-1> Removing the Hoop and Tension Rods

The top and bottom hoops come temporarily attached to the floor tom with three tension rods. First, remove each tension rod and hoop. These tension bolts will be used again when assembling the head, so put them in a secure place.

<2-2> Attaching the drum head and hoop

Next, attach the batter side head (with logo) and hoop. Use the three removed tension rods and remaining short tension rods included in the parts box. See Picture 6 for the logo placement. Next, set the head on the resonant side of the drum in the same way as the batter side head.

<2-3> Attaching the floor tom legs

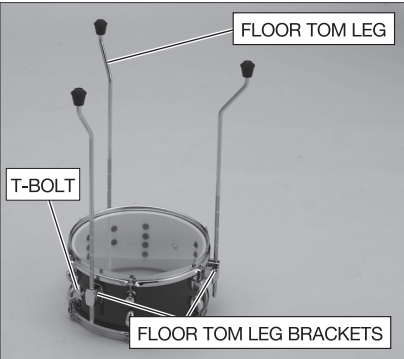
Finally, place the floor tom leg into the brackets on the side of the drum. Then, firmly tighten the T-bolt to secure the leg in place.



Pic.5



Pic.6



Pic.7

Storage

By purchasing the optional drum bag set (DSS36LJ), you can store and transport the tom and floor tom inside the bass drum.

<1-1>

To split the bass drum into two shells, place the bass drum on the floor with the resonant head facing up. Then, remove the bass drum spurs and lift off the top shell.

<1-2>

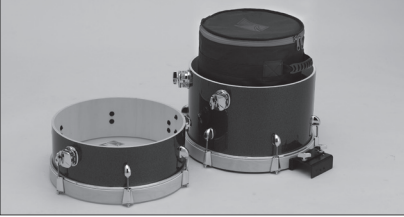
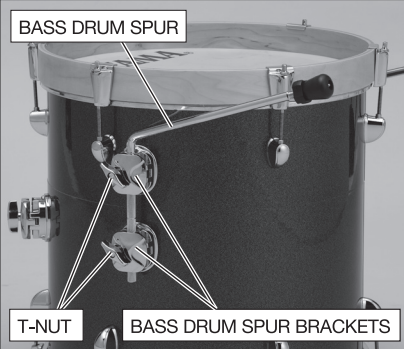
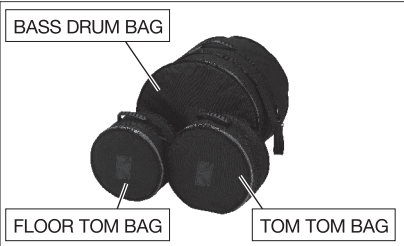
Put the tom and floor tom in their respective bags. Then, place them inside bass drum shell A (batter side).

<1-3> Reassembling the Bass Drum

Follow the same procedure for "Attaching Drum Shell A (batter side) and Drum Shell B (resonant side)". Then, place the bass drum spurs through each bracket and tighten the T-nut to secure the drum shells in place. Lastly, rotate the bass drum spurs so they are flush against the bass drum shell.

<1-4>

Finally, place the bass drum in the bass drum bag.



Note

-Proceed carefully when carrying the drum kit in the above bag. If handled roughly, the drum shells or shell hardware parts may become damaged.

-Please note that if you store the drum kit without using TAMA's exclusive bag, the inside of the bass drum shell and the drum head may be scratched or damaged.

TAMA® HOSHINO GAKKI CO., LTD.
<http://www.tama.com>

* This instruction manual is current as of November 2020.
Please note that the specifications are subject to change without notice for product improvement.

TSCJS20K