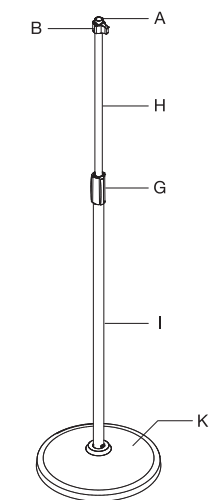


# TAMA IRON WORKS MICROPHONE STAND OWNER'S MANUAL

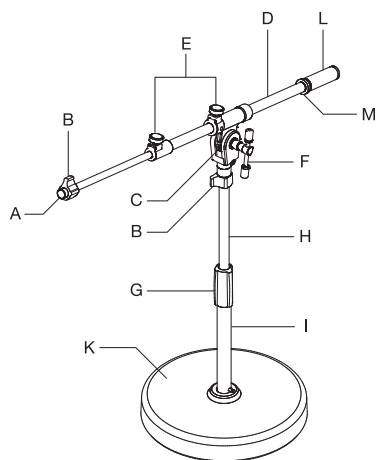
## Cast-Base Type

Congratulations on the purchase of your TAMA IRON WORKS microphone stand! In order to maximize the performance and life of your new investment, please read these instructions carefully and keep this manual for future reference.

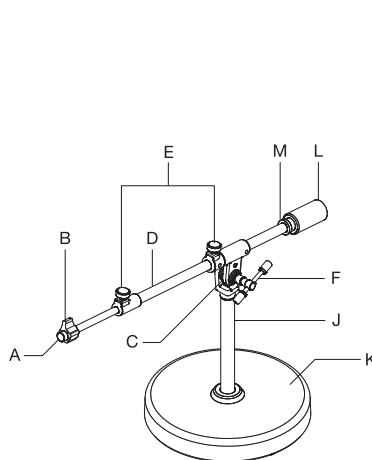
### NOTES ON THE DIAGRAM



TYPE 1: Straight Stand



TYPE 2: Low Profile Stand



TYPE 3: Extra Low Profile Stand

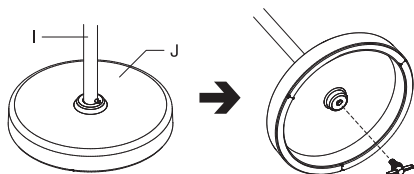
- A Microphone Holder Mounting Threads
- B Locking Nut
- C Boom Tilter
- D Boom Arm
- E Boom Arm Locking Screw
- F Tilter Locking Handle
- G Grip Lock Height Adjustment
- H Upper Pipe
- I Lower Pipe
- J Solid Vertical Bar
- K Base
- L Counterweight
- M Counterweight Locking Nut
- Cable Clip (accessory)

### ASSEMBLY & ADJUSTMENT

#### BASE ASSEMBLY

##### For all Types

Loosen the T-Bolt from Lower Pipe (I). Insert the bottom of the Lower Pipe (I) into the center hole of the Base (K), tighten the T-bolt firmly.



#### STAND HEIGHT ADJUSTMENT

##### For Type1 and Type2 Only

With the stand upright, hold the Upper Pipe (H), loosen the Grip Lock Height Adjustment (G) by turning it counter-clockwise. Set the height as desired, then tighten the Grip Lock Height Adjustment (G) by turning clockwise. The Grip Lock Height Adjustment (G) should be "hand tight". Using tools to tighten the Grip Lock Height Adjustment (G) can lead to overtightening which can cause damage to the stand.

Note: The height of the Solid Vertical Bar of the Extra Low Telescoping Boom Stand does not have a height adjustment as it is intended for mic-ing bass drums and/or guitar amplifiers at a low position.

#### BOOM ARM ANGLE ADJUSTMENT

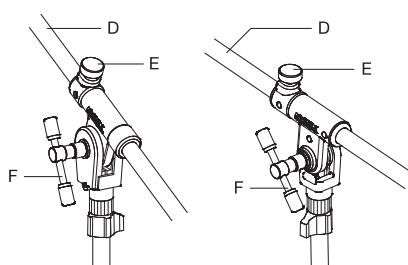
##### For Type2 and Type3 Only

While holding the Boom Arm (D), loosen the Tilter Locking Handle (F) and adjust the angle of the Boom Arm to your desired position. Re-tighten the Tilter Locking Handle (F). The Tilter Locking Handle (F) should be "hand tight". Using tools to tighten the Tilter Locking Handle (F) can lead to overtightening which can cause damage to the stand.

#### BOOM ARM LENGTH ADJUSTMENT

##### For Type2 and Type3 Only

While holding the Boom Arm (D), loosen the Locking Screws (E) and set at desired length, then tighten the Locking Screws (E) to secure the length of the Boom Arm.



#### MOUNTING A MICROPHONE HOLDER

Microphone holders for specific Microphones vary by manufacturer. An adaptor may be required (sold separately) to mount the Microphone you are working with to a Tama Microphone stand.

#### COUNTERWEIGHT REMOVAL TO REPOSITION THE BOOM TILTER

##### For Type2 and Type3 Only

Sometimes it may be easier (or even necessary) to make adjustments to the boom arm position from one side of the stand or the other, such as in a case where you are positioning stands around the outside of a drum kit. Having the Boom Tilter Handle facing outwards (towards you) as opposed to facing inward (towards the player) can make work faster and easier. This change is easily accomplished by removing the boom counterweight and reversing the direction of the boom arm.

##### To do this:

1. Unlock and remove both the Boom Counterweight (L) and Locking Nut (M) by firmly holding the Locking Nut (M) with one hand, and turning the Boom Counterweight (L) counter-clockwise. This will unlock the Boom Counterweight so can be removed.

**Caution!**  
Be sure to grasp the Boom Counterweight (L) firmly when removing it from the Boom Arm (D) to prevent it from falling.

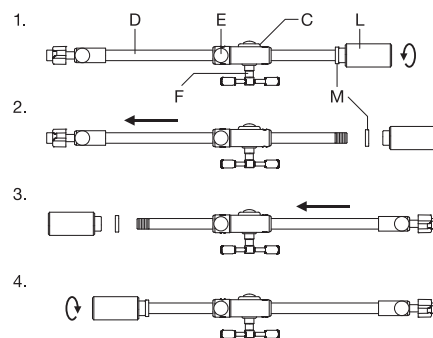
2. Loosen the Boom Arm Locking Screw (E) and

completely remove the Boom Arm (D) from the Boom Tilter (C).

3. Re-insert the Boom Arm (D) into the Boom Tilter (C) in the opposite direction from which it was removed.

4. With the "open" end of the Boom Arm (D) now on the opposite side of the stand, replace and tighten the Boom Counterweight (L) in the same manner in which it was removed—this time turning the Boom Counterweight (L) clockwise to lock it into place. Be sure to use the same caution when replacing the Boom Counterweight, as when removing it, to prevent it from falling.

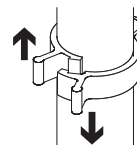
We recommend occasionally checking to be sure to the Boom Counterweight (L) is firmly locked in place to prevent it from falling and causing damage.



#### USING CABLE CLIPS

To attach the clip, hold the mic cable against the center vertical tube with one hand and slide the Cable Clip around both the mic cable and the tube. Lock the clip into position until they click. To remove the cable clip from the stand, squeeze the two tabs together with your thumb and index finger.

While keeping your thumb and index finger squeezing the tabs together, slide your thumb in an upward motion and your index finger in a downward motion to unlock and release the clip.



**TAMA**

HOSHINO GAKKI CO., LTD.

This instruction manual was issued in December 2020. Specification and design are subject to change without notice.

TS756R20L