

# TAMA DRUMS AND HARDWARE

1997



# THE STRONGEST NAME IN DRUMS. A HISTORY OF TAMA.

The story of "The Strongest Name in Drums" begins in 1908 with the founding of the Hoshino company in Nagoya, Japan. The company, which first handled books and sheet music soon began importing musical instruments including drums by Slingerland and Ludwig for the Japanese market. By 1955 Hoshino began exporting its own brand of Star Drums (the name "star" in Star Drums, Artstar and Starclassic, etc. is derived from the Hoshino name which translates as "Starfield").

## A NEW DRUM IDENTITY..

The Star Drum line continued until 1974 (the Star Drums that were made of clear acrylic are still sought after by Tama drum collectors). Up to this time, much of Hoshino business was also in making drums for other brands. But in 1974, Hoshino decided that they would make a better grade of drums and would no longer manufacture for other companies. To forge a new identity for these drums, the brand name was changed from Star to Tama (named after Tama Hoshino, a revered Hoshino matriarch). But the name change was the smallest part of that effort.



1967 Star Drum Set.



Original 1973 Imperial Star.

The real difference, the difference that brought Tama to the attention of serious drummers and changed the drum set as we know it, was Tama's hardware.

## HARDWARE REVOLUTION

Today inventory locks, boomstands, cymbal masts, offset filters and multi-clamps are all standard items we now take for granted. But when Tama offered these innovations and the first double-braced heavy duty hardware in the mid-70's, it was nothing less than revolutionary. Up to that point, drum stands were usually thin, often unstable, and definitely not designed to hold up under the new heavier drumming styles. Specialized attachments were mostly jury-rigged contraptions improvised by inventive drummers. By seeing what drummers really needed on the job—durable, well balanced hardware that could be easily adapted to every style and stage—Tama engineers redefined drum hardware and the drum set.

Hardware innovation at Tama continues to this day with recent offerings including the Star-Cast Mounting System, Iron Cobra pedals, and the Air-Ride Snare System.

But while the hardware first got drummers' attention, it was the drums that kept that attention and created the loyal legion of Tama players.



1972 Pro-Titan Hi-Ace single bass drum stand.



1974 Stage King Snare.



1977 Tama Superstar stands with aluminum legs.



1982 Cannon King Beat and Hi-Beat bass drum pedals.



1980 Tama Titan boom stand.

## THE STRONGEST NAME IN DRUMS



1974 IMPERIALSTAR kit.



IMPERIALSTAR Drum shells.

Other well-received additions to the Tama line in both the pro and inexpensive lines continued to add to the Tama reputation. In 1983 the prestige Artstar Series was introduced as the new flagship of the line, a line that caters to this day. Not long after, in response to trends towards larger sets with



1980 Original ARTSTAR COBRA kit.

deeper drums, Tama's inexpensive, but high quality 5 pc Swingstar sets evolved into the Rockstar line with its larger drum depths and larger drum selection.

Tama didn't leave its innovations exclusively to hardware design. Tama has also added the Gong bass drum and the melodic Octoban drums to the percussion palette.

And in recent years, the Starclassic drum line with its thin shells combined with the Star-Cast Mounting System brought Tama the "Most Innovative Drum of the Year" Award at the music industry's 1995 NAMM trade show.

## THE STRONGEST NAMES IN DRUMS

Finally, there is much more to the history of Tama than a few pages can cover. But any discussion of the history of Tama has to include the artists that have been associated with the company. The artistic and technical input of legendary artists such as Simon Phillips, Kenny Aronoff, Lenny White, Bill Bruford, Stewart Copeland and other legendary players has simply been invaluable in the creation of Tama drums and hardware.

And the history of Tama continues to be written as new artists such as Tim Alexander, Rayford Griffin, Rodney Holmes, and Mike Porro are helping us design the instruments that will be offered now and in the future.



1977 SUPERSTAR Drum set.

## CONTENTS

Introduction	2-3
Starclassic Maple	4-9
Starclassic Performer	10-13
Artstar Custom	14-17
Artstar ES	18-21
Artists	22-23
Star-Cast Mounting System	24
AIR RIDE Snare Mounting System	25
Snare Drums	26-29
Percussion	30
1st Chair Drum Thrones	31
Iron Cobra Drum Pedals	32-36
New Titan Stands	37
Cymbal Stands	38
Hi-hat Stands	39
Tom Holders & Tom Stands	40
Snare Stands & Accessories	41
Power Tower Systems	42
Tension Watch & Rhythm Watch	43
Accessories	44-45
Artists	46-47

# STARCLASSIC MAPLE....

Starclassic drums are the culmination of over ten years of intensive research and experimentation by Tama master builders. Their goal was to create "the ultimate drum"...drums that would surpass everything that preceded them in sound, craftsmanship, appearance and technology. That these drums are now the choice of players from Simon Phillips to Mike Portnoy is testimony that Tama's builders succeeded in their quest.

While every aspect of Starclassic drums was exhaustively examined and then refined or changed entirely, there are three important points that distinguish Starclassic from other "designer drums": (1) the attack and wide open resonance of super-thin select shells, (2) the consistency and strength of gold-cast hoops, and (3) the new Star-Cast Mounting System, the most significant technological advance in suspended drum mounting to date. And there is one other aspect of Starclassic worth mentioning, their flawless Tama quality and superior craftsmanship.

Starclassic maple drums are now available for custom order, with enough choices to give the discriminating drummer close to 3,000 possible ways to order a Starclassic maple drum...15 different finishes, the choice of gold or chrome shell hardware, up to four different shell depths, and for those who prefer a more mellow, muted sound, the option of Sound Focus Rings is now available worldwide.

## SMC1-FG HHG (Heavy Gold) with Sound Focus Ring & Gold Parts

SMC1-0100	10"x10" tom drum	1	HF020	Short pedal	1
SM1-1005L	8"x10" tom tom	1	HS050	Hi-hat stand	1
SM1-1115L	10"x12" tom tom	1	HS050	Hi-hat stand	1
SM1-1000C	8"x12" maple snare drum	1	KS020	Cymbal stand	2
			KS020	Combination stand	1



Ultra-laminated light maple shell



Suggested snare counterweight



## STAR-CAST MOUNTING SYSTEM

US Pat. 5,654,285 (Excluded under Patenting Pending)



## SELECTED CANADIAN MAPLE SHELLS

Thickness: tom tom/floor tom - 5mm, bass drum - 7mm.

The most important factor in achieving a great drum sound is, of course, the shell. Maple is the material of choice for most professional drummers due to its tonal warmth, superb rigidity and exceptional clarity throughout its total range. Starclassic's ultra-thin shell is one of the finest examples of this great drum wood utilized to its fullest sound potential. Unlike many other thin shelled drums, Tama's staggered wear, cross laminated shell construction makes these drums so strong that they don't require sound reinforcement rings.



This unique system offers total tonal isolation, studio quiet performance and the complete, unhindered shell resonance you get when you strike a hand held drum. Unlike other suspended mounting systems, Star-Cast doesn't interfere with the tuning bolts. This results in faster, easier head changes and far superior tuning stability and longevity.

To reduce unwanted vibration traveling through the rubber connecting bolts, the top and bottom thread rods are separate.



## SMC2 MBF (Marine Blue Fade)

SMC2-01	12"x20" bass drum	1	HF020	Short pedal	1
SM1-1005L	8"x10" tom tom	1	HS050	Hi-hat stand	1
SM1-1115L	10"x12" tom tom	1	KS050	Bottom cymbal stand	1
SM1-1000C	8"x12" maple snare drum	1	KS020	Combination stand	2
SM1-1000C	8"x12" maple snare drum	1	KS020	Combination stand	1
SM1-1000C	8"x12" maple snare drum	1	KS020	Combination stand	1

Color: SMC2 (Blue Fade)

## PAINTED FINISHES



Brown Fade (BF)



Piano Black (PBK)



Piano White (PW)



Bright Blue (BL)



British Racing Green (BRG)



Coral Pearl Blue (CPB)



Cherry Black (CBK)



Crimson Fade (CF)

## PAINTED FINISHES



Violet Shade (VS)



Royal Walnut (RW)



Ruby Red (RR)



Marine Blue Fade (MBF)



Honey Gold (HG)



Green Sparkle (GS)



Gradient Raspberry (GR)

## SFR (Sound Focus Ring)



Although Starclassic drums are strong enough not to require shell rings for reinforcement, many artists such as Simon Phillips still like the mellowing or mating effect that rings have on drum tone. Accordingly, we are pleased to offer the custom option of Sound Focus Rings on Starclassic Maple Series drums.

## GOLD PLATED SHELL HARDWARE

For an even more stunning visual effect, the option of gold shell hardware\* is now available worldwide.

\*not including memory locks, wing nuts, tension rods, spurs, or floor tom legs.



## UP TO FOUR SHELL DEPTHS

Tone, response, and tuning range are significantly affected by shell depth and diameter. Deeper shells result in lower and deeper drum pitch and longer sustain. Smaller drum depths on the other hand offer quicker response due to the shorter distance between the top and bottom heads. Many experts feel that the choice of drum size is the most significant decision you will make in selecting a set. For this reason, the availability of up to four different shell depths is perhaps the most important Starclassic option.

Starclassic offers the choice of traditional sizes, X-tos, and every inch of depth in between.



## MODEL NUMBERS

Starclassic drum specifications are indicated by the model number as illustrated in the following example.



SHRTER DEPTH	STANDARD MODEL	WITH SOLID FOCUS RING	WITH GOLD PARTS	WITH SOLID FOCUS RING AND GOLD PARTS
<b>BASS DRUMS</b>				
14"	SMB2114	SMB2114P	SMB2114G	SMB2114PG
16"	SMB2116	SMB2116P	SMB2116G	SMB2116PG
18"	SMB2118	SMB2118P	SMB2118G	SMB2118PG
20"	SMB2120	SMB2120P	SMB2120G	SMB2120PG
22"	SMB2122	SMB2122P	SMB2122G	SMB2122PG
24"	SMB2124	SMB2124P	SMB2124G	SMB2124PG
<b>FLOOR TOMS</b>				
14"	SMF2114	SMF2114P	SMF2114G	SMF2114PG
16"	SMF2116	SMF2116P	SMF2116G	SMF2116PG
18"	SMF2118	SMF2118P	SMF2118G	SMF2118PG
20"	SMF2120	SMF2120P	SMF2120G	SMF2120PG
22"	SMF2122	SMF2122P	SMF2122G	SMF2122PG
24"	SMF2124	SMF2124P	SMF2124G	SMF2124PG

SHRTER DEPTH	STANDARD MODEL	WITH SOLID FOCUS RING	WITH GOLD PARTS	WITH SOLID FOCUS RING AND GOLD PARTS
<b>TOM TOMS</b>				
8"	SMT2108	SMT2108P	SMT2108G	SMT2108PG
10"	SMT2110	SMT2110P	SMT2110G	SMT2110PG
12"	SMT2112	SMT2112P	SMT2112G	SMT2112PG
14"	SMT2114	SMT2114P	SMT2114G	SMT2114PG
16"	SMT2116	SMT2116P	SMT2116G	SMT2116PG
18"	SMT2118	SMT2118P	SMT2118G	SMT2118PG
20"	SMT2120	SMT2120P	SMT2120G	SMT2120PG
22"	SMT2122	SMT2122P	SMT2122G	SMT2122PG
24"	SMT2124	SMT2124P	SMT2124G	SMT2124PG

SHRTER DRUM Please see the Page 20 Starclassic Series.



## SMC3 GSP (Green Sparkle)

SMC310	10"x10" bass drum	1	HC2000	Reflexion stand	1
SMC312	12"x12" tom tom	1	HC2000	Drum pedal	1
SMC314	14"x14" floor tom	1	HC2000	6-rod stand	1
SMC316	16"x16" New tom	1	HC2000	Drum rack	1
HC2000	6-rod stand	1	HC2000	Drum rack	1
HC2000	6-rod stand	1	HC2000	Drum rack	1
HC2000	6-rod stand	1	HC2000	Drum rack	1

## SMC3 RRS (British Racing Green) w/Gold Parts

SMC310	10"x10" bass drum	2	HC2000	Reflexion stand	2
SMC312	12"x12" tom tom	1	HC2000	Drum pedal	1
SMC314	14"x14" floor tom	1	HC2000	6-rod stand	1
SMC316	16"x16" New tom	1	HC2000	Drum rack	1
SMC318	18"x18" New tom	1	HC2000	Drum rack	1
SMC320	20"x20" New tom	1	HC2000	Drum rack	1
SMC322	22"x22" New tom	1	HC2000	Drum rack	1
SMC324	24"x24" New tom	1	HC2000	Drum rack	1
SMC326	26"x26" New tom	1	HC2000	Drum rack	1
SMC328	28"x28" New tom	1	HC2000	Drum rack	1
SMC330	30"x30" New tom	1	HC2000	Drum rack	1
SMC332	32"x32" New tom	1	HC2000	Drum rack	1
SMC334	34"x34" New tom	1	HC2000	Drum rack	1
SMC336	36"x36" New tom	1	HC2000	Drum rack	1
SMC338	38"x38" New tom	1	HC2000	Drum rack	1
SMC340	40"x40" New tom	1	HC2000	Drum rack	1
SMC342	42"x42" New tom	1	HC2000	Drum rack	1
SMC344	44"x44" New tom	1	HC2000	Drum rack	1
SMC346	46"x46" New tom	1	HC2000	Drum rack	1
SMC348	48"x48" New tom	1	HC2000	Drum rack	1
SMC350	50"x50" New tom	1	HC2000	Drum rack	1
SMC352	52"x52" New tom	1	HC2000	Drum rack	1
SMC354	54"x54" New tom	1	HC2000	Drum rack	1
SMC356	56"x56" New tom	1	HC2000	Drum rack	1
SMC358	58"x58" New tom	1	HC2000	Drum rack	1
SMC360	60"x60" New tom	1	HC2000	Drum rack	1
SMC362	62"x62" New tom	1	HC2000	Drum rack	1
SMC364	64"x64" New tom	1	HC2000	Drum rack	1
SMC366	66"x66" New tom	1	HC2000	Drum rack	1
SMC368	68"x68" New tom	1	HC2000	Drum rack	1
SMC370	70"x70" New tom	1	HC2000	Drum rack	1
SMC372	72"x72" New tom	1	HC2000	Drum rack	1
SMC374	74"x74" New tom	1	HC2000	Drum rack	1
SMC376	76"x76" New tom	1	HC2000	Drum rack	1
SMC378	78"x78" New tom	1	HC2000	Drum rack	1
SMC380	80"x80" New tom	1	HC2000	Drum rack	1
SMC382	82"x82" New tom	1	HC2000	Drum rack	1
SMC384	84"x84" New tom	1	HC2000	Drum rack	1
SMC386	86"x86" New tom	1	HC2000	Drum rack	1
SMC388	88"x88" New tom	1	HC2000	Drum rack	1
SMC390	90"x90" New tom	1	HC2000	Drum rack	1
SMC392	92"x92" New tom	1	HC2000	Drum rack	1
SMC394	94"x94" New tom	1	HC2000	Drum rack	1
SMC396	96"x96" New tom	1	HC2000	Drum rack	1
SMC398	98"x98" New tom	1	HC2000	Drum rack	1
SMC400	100"x100" New tom	1	HC2000	Drum rack	1





## NON-LOOSENING WASHER



On Starclassic Maple Series drums, 2.5mm thick nylon washers are utilized to increase tuning stability and reduce the wear and tear caused by metal-to-metal contact.

## SMCS BRP(Brown Finish)

SMC1118	18"x22" bass drum	1	HP100	Drum pedal	1
SMC1120	20"x22" tom tom	1	HR100	Hi-hat stand	1
SMC1120B	20"x22" tom tom	1	HC100	Stands stand	1
SMC1121	19"x22" tom tom	1	HC100	Stand stand	1
SMC1121B	19"x22" tom tom	1	HC100	Stand stand	1
SMC1121C	19"x22" tom tom	1	HC100	Stand stand	1
SMC1121D	19"x22" tom tom	1	HC100	Stand stand	1
SMC1121E	19"x22" tom tom	1	HC100	Stand stand	1
SMC1121F	19"x22" tom tom	1	HC100	Stand stand	1
SMC1121G	19"x22" tom tom	1	HC100	Stand stand	1
SMC1121H	19"x22" tom tom	1	HC100	Stand stand	1
SMC1121I	19"x22" tom tom	1	HC100	Stand stand	1
SMC1121J	19"x22" tom tom	1	HC100	Stand stand	1
SMC1121K	19"x22" tom tom	1	HC100	Stand stand	1
SMC1121L	19"x22" tom tom	1	HC100	Stand stand	1
SMC1121M	19"x22" tom tom	1	HC100	Stand stand	1
SMC1121N	19"x22" tom tom	1	HC100	Stand stand	1
SMC1121O	19"x22" tom tom	1	HC100	Stand stand	1
SMC1121P	19"x22" tom tom	1	HC100	Stand stand	1
SMC1121Q	19"x22" tom tom	1	HC100	Stand stand	1
SMC1121R	19"x22" tom tom	1	HC100	Stand stand	1
SMC1121S	19"x22" tom tom	1	HC100	Stand stand	1
SMC1121T	19"x22" tom tom	1	HC100	Stand stand	1
SMC1121U	19"x22" tom tom	1	HC100	Stand stand	1
SMC1121V	19"x22" tom tom	1	HC100	Stand stand	1
SMC1121W	19"x22" tom tom	1	HC100	Stand stand	1
SMC1121X	19"x22" tom tom	1	HC100	Stand stand	1
SMC1121Y	19"x22" tom tom	1	HC100	Stand stand	1
SMC1121Z	19"x22" tom tom	1	HC100	Stand stand	1



## ABSOLUTE MINIMUM SHELL CONTACT

From the Star-Cast Mounting System to the single small bag, every aspect of Starclassic was designed to accord with the Tama ideal of the bare minimum of shell contact. Instead of metal badges riveted to the shell, Starclassic utilizes a maple airhole cap and a logo that is imprinted onto the shell before the final finish is applied. These features also contribute to Starclassic's rich, timeless appearance.



## CLAW HOOKS MCH-SC

The innovative design of the MCH-SC claw hooks allows the use of tension rods (instead of the more awkward and heavier T-rod), reduces the possibility of damage to the rod, and eliminates unwanted sideways pressure. A rubber stopper ensures that tension rod, clawhook and washer won't become separated. No more floor searches for scattered parts!

## SMCS CLR (Clear Roof Blue)

SMC1118	18"x22" bass drum	1	HP100	Drum pedal	1
SMC1120	20"x22" tom tom	1	HR100	Hi-hat stand	1
SMC1120B	20"x22" tom tom	1	HC100	Stands stand	1
SMC1121	19"x22" tom tom	1	HC100	Stand stand	1
SMC1121B	19"x22" tom tom	1	HC100	Stand stand	1
SMC1121C	19"x22" tom tom	1	HC100	Stand stand	1
SMC1121D	19"x22" tom tom	1	HC100	Stand stand	1
SMC1121E	19"x22" tom tom	1	HC100	Stand stand	1
SMC1121F	19"x22" tom tom	1	HC100	Stand stand	1
SMC1121G	19"x22" tom tom	1	HC100	Stand stand	1
SMC1121H	19"x22" tom tom	1	HC100	Stand stand	1
SMC1121I	19"x22" tom tom	1	HC100	Stand stand	1
SMC1121J	19"x22" tom tom	1	HC100	Stand stand	1
SMC1121K	19"x22" tom tom	1	HC100	Stand stand	1
SMC1121L	19"x22" tom tom	1	HC100	Stand stand	1
SMC1121M	19"x22" tom tom	1	HC100	Stand stand	1
SMC1121N	19"x22" tom tom	1	HC100	Stand stand	1
SMC1121O	19"x22" tom tom	1	HC100	Stand stand	1
SMC1121P	19"x22" tom tom	1	HC100	Stand stand	1
SMC1121Q	19"x22" tom tom	1	HC100	Stand stand	1
SMC1121R	19"x22" tom tom	1	HC100	Stand stand	1
SMC1121S	19"x22" tom tom	1	HC100	Stand stand	1
SMC1121T	19"x22" tom tom	1	HC100	Stand stand	1
SMC1121U	19"x22" tom tom	1	HC100	Stand stand	1
SMC1121V	19"x22" tom tom	1	HC100	Stand stand	1
SMC1121W	19"x22" tom tom	1	HC100	Stand stand	1
SMC1121X	19"x22" tom tom	1	HC100	Stand stand	1
SMC1121Y	19"x22" tom tom	1	HC100	Stand stand	1
SMC1121Z	19"x22" tom tom	1	HC100	Stand stand	1



## DIE-CAST HOOPS

The resonant highs and crisp attack of zinc die-cast hoops combine with the Star-Cast Mounting System and the low overtones capability of Starclassic's thin shells for incomparable dynamic range, tone and balance.



## SPUR BRACKET MSB30R, MSB30L

Tama's MSB30 die-cast bracket holds the spur securely thanks to the same powerful hinge mechanism used on the MT830 mounting bracket. Unique memory markers found on the folding spur bracket help simplify set up.



## SMCT FWH (Royal Walnut w/Spaced Focuz Ring)

SMC1118	18"x22" bass drum	1	HP100	Drum pedal	1
SMC1120	20"x22" tom tom	1	HR100	Hi-hat stand	1
SMC1120B	20"x22" tom tom	1	HC100	Stands stand	1
SMC1121	19"x22" tom tom	1	HC100	Stand stand	1
SMC1121B	19"x22" tom tom	1	HC100	Stand stand	1
SMC1121C	19"x22" tom tom	1	HC100	Stand stand	1
SMC1121D	19"x22" tom tom	1	HC100	Stand stand	1
SMC1121E	19"x22" tom tom	1	HC100	Stand stand	1
SMC1121F	19"x22" tom tom	1	HC100	Stand stand	1
SMC1121G	19"x22" tom tom	1	HC100	Stand stand	1
SMC1121H	19"x22" tom tom	1	HC100	Stand stand	1
SMC1121I	19"x22" tom tom	1	HC100	Stand stand	1
SMC1121J	19"x22" tom tom	1	HC100	Stand stand	1
SMC1121K	19"x22" tom tom	1	HC100	Stand stand	1
SMC1121L	19"x22" tom tom	1	HC100	Stand stand	1
SMC1121M	19"x22" tom tom	1	HC100	Stand stand	1
SMC1121N	19"x22" tom tom	1	HC100	Stand stand	1
SMC1121O	19"x22" tom tom	1	HC100	Stand stand	1
SMC1121P	19"x22" tom tom	1	HC100	Stand stand	1
SMC1121Q	19"x22" tom tom	1	HC100	Stand stand	1
SMC1121R	19"x22" tom tom	1	HC100	Stand stand	1
SMC1121S	19"x22" tom tom	1	HC100	Stand stand	1
SMC1121T	19"x22" tom tom	1	HC100	Stand stand	1
SMC1121U	19"x22" tom tom	1	HC100	Stand stand	1
SMC1121V	19"x22" tom tom	1	HC100	Stand stand	1
SMC1121W	19"x22" tom tom	1	HC100	Stand stand	1
SMC1121X	19"x22" tom tom	1	HC100	Stand stand	1
SMC1121Y	19"x22" tom tom	1	HC100	Stand stand	1
SMC1121Z	19"x22" tom tom	1	HC100	Stand stand	1



# STARCLASSIC PERFORMER

## SNARE DRUM

**SWSS55 (5-1/2"x14")**  
This mellow sounding snare features the same 8 ply, 6mm Japanese Basswood shell with birch inner and outer plies as the Performer toms.



## WOOD HOOP & CLAW HOOKS

For 1997, Performer bass drums now feature wood hoops fitted with the innovative MCHSC clawhooks whose recessed design reduces the possibility of damage to the tuning bolts.



## SPUR BRACKET

**MSB30L, MSB30R**

Tama's MSB30 die-cast bracket holds the spur securely thanks to the same powerful hinge mechanism used on the MTB30 mounting bracket. Unique memory markers found on the folding spur bracket help simply set up.



## SPC722D 128 (Indigo Blue)

SPC722D	Shell, kit	1	MSB	Hardware kit	1
SPC722D	8"x10" Tom tom	1	MSB	Stave stand	1
PC2020	3-1/4"x14" Standard clear toms drum	1	MSB	Stave stand	1
SPC722D	Single tom adaptor	1	MSB	Stave stand	1
MSB	Clamp	1			



## SPC722D VLT (Metal)

SPC722D	Shell, kit	1
MSB	Hardware kit	1



## BASS DRUM HEADS

Performer bass drums are fitted with the Evans EQ Series head (EQ1) on the batter side, and the Tama Original black logo head on the front. Both are fitted with O-rings for seating so you can get a great sound practically right out of the box.

## SPC8204 AMG (Amber Gold)

SPC8204	Shell, kit	1	MSB	Hardware kit	1
SPC8204	8"x10" Tom tom	1	MSB	Stave stand	1
SPC8204	3-1/4"x14" Standard clear toms drum	1	MSB	Stave stand	1
SPC8204	Single tom adaptor	1	MSB	Stave stand	1
MSB	Clamp	1			



# FORGET THE ARTS



Since 1953, Aristar drums have been and continue to be the choice of the hard rock elite. Although made of the same material with the same strong cross laminated, staggered seam construction of Starclassic drums, Aristar Caxton was designed for those pro drummers who prefer a more cutting, "harder edged" sound of a thicker maple shell. Consequently Aristar Caxton drums are 2 mm thicker than their Starclassic Maple counterparts (7 mm vs. 5 mm in the toms).

As befits these superbly crafted drums, Artstar Custom toms and floor toms come standard with zinc die-cast hoops.

NEW/REPLACEMENT DECKS				
BASIC DECKS	BASIC DECKS (with 2x6 joist/ledger)	FLOOR TONGS	TONG TONGS (2x6 joist)	TONG TONGS (Regular deck)
18"x20" AMB202	36"x20" AMB202G	18"x14" AM114B	3"x8" AM7B	2"x12" AM112B
18"x20" AMB202	36"x20" AMB202G	18"x16" AM116B	3"x12" AM712B	2"x12" AM112B
18"x24" AMB242	36"x24" AMB242G	18"x18" AM118B	3"x12" AM712B	2"x12" AM112B
		18"x18" AM118B	3"x12" AM712B	2"x12" AM112B
		18"x24" AM114B	3"x14" AM714B	2"x14" AM114B
		18"x24" AM114B	3"x12" AM712B	2"x12" AM112B

## AMC1 TSV (Titanium Silver)

AWR220	18" x 22" 1/2" deep	2	HW-6000	Double top holder	2
AWR230	8" x 8" 1/2" deep	1	HW-6000	Drum pedestal	1
AWR230	10" x 10" 1/2" deep	1	HW-6000	Logarithmic in-hat stand	1
AWR230	11" x 12" 1/2" deep	1	HW-6000	3-Rail	1
AWR230	12" x 12" 1/2" deep	1	HW-6000	Reverie stand	1
AWR240	14" x 14" 1/2" deep	1	HW-6000	Combo stand	1
AWR240	16" x 16" 1/2" deep	1	HW-6000	Telescopung boom stand	4
AWR250	5-1/2" x 4" 1/2" maple stand drum	1			
AWR250	5-1/2" x 4" 1/2" maple stand drum	1			
AWR250	5-1/2" x 4" 1/2" maple stand drum	1			



SHEN

9 PLY SELECT CANADIAN  
MAPLE SHELLS  
Thickness: tom tom/floor tom  
7mm, bass drum - 9mm.

## SOUND EDGE

Artstar sound edges are precision machined to a 90-degree angle. Less wood touching the drum head (a 7:3 sound-edge bevel ratio) contributes to Artstar's exceptional resonance.



## TOM BRACKET

The MTRG's super-strong hinge system clamps much more securely than a standard thumb screw. The bracket and memory lock are designed to fit together for greater strength and an exceptionally streamlined appearance.

## AMC2 GRF (Green Fade)

[illegible]

### BASS DRUM CLAW HOOKS



MCHS0C

Artstar Custom bass drums use the same die-cast, claw/tension bolt system as Starclassic, but feature their own signature Artstar shape

### DIE-CAST HOOPS

The high end clarity of die-cast hoops combine with Artstar's 7mm maple shells for a sound that can cut through walls of amplified sound while maintaining the sensitivity needed for professional recording.





#### LUGS

The shape of the Artstar lug is bold and sleek, modern and classic. Its angular exterior is complemented by a gently curved back that conforms precisely to the drum shell. To ensure noise-free operation a nylon stopper is inserted under each lug.

#### BASS DRUM SPUR BRACKET MSB30R/MSB30L



The MSB30 spur bracket used on Artstar and Starclassic can be used on any size bass drum from 18" to 24". Memory markers on the folding spur bracket provide fast and easy set-up.



#### AMC3 PEK (Piano Black)

AMC324	18"x24" bass drum	1	HPD5	Drum pedal	1
AMT129	10"x10" tom tom	1	MSB30R	16" foot stand	1
AMT129	11"x10" tom tom	1	MSB30L	Drum stand	1
AMT143	12"x14" tom tom	1	HC20	Cymbal stand	1
AMT169	14"x16" tom tom	1	HC30R	Boom cymbal stand	1
AMT169	3-1/2"x14" snare stand drum	1	HC30R	Boom cymbal stand	2
MT1600	Color 1960 Jimmy Gold	1	HC30R	Drum throne	1
MT1600	Drum throne	1			

#### BASS MOUNT



Artstar Custom bass drums can be ordered either with or without the MBM-SC bass mount.

#### AMC4 CHW (Cherry Wine)

AMC424	18"x24" bass drum	1	HPD5	Drum pedal	1
AMT129	10"x10" tom tom	1	MSB30R	16" foot stand	1
AMT129	11"x10" tom tom	1	MSB30L	Drum stand	1
AMT143	12"x14" tom tom	1	HC20	Cymbal stand	1
AMT169	14"x16" tom tom	1	HC30R	Boom cymbal stand	1
MT1600	Color 1960 Jimmy Gold	1			
MT1600	Drum throne	1			



#### AMC5 BM (Bamboo (Lavender))

AMC524	18"x24" bass drum	1	HPD5	Drum pedal	1
AMT129	10"x10" tom tom	1	MSB30R	16" foot stand	1
AMT129	11"x10" tom tom	1	MSB30L	Drum stand	1
AMT143	12"x14" tom tom	1	HC20	Cymbal stand	1
AMT169	14"x16" tom tom	1	HC30R	Boom cymbal stand	1
MT1600	Color 1960 Jimmy Gold	1	HC30R	Drum throne	1
MT1600	Drum throne	1			





# TOM BRACKET & FLOOR TOM SPUR BRACKET MTB30

Artstar ES drums feature the same MTB30 brackets used on Artstar Custom. Includes matching memory lock for easy set up and streamlined appearance.



## ARTISTAR ES (Jet Black)

ARTISTAR	DRUM KIT	1	MTB	ARTISTAR KIT	1
	10" x 12" tom tom	1		10" x 12" tom tom	1
	10" x 12" tom tom	1		10" x 12" tom tom	1
	10" x 12" tom tom	1		10" x 12" tom tom	1
	10" x 12" tom tom	1		10" x 12" tom tom	1
	10" x 12" tom tom	1		10" x 12" tom tom	1
	10" x 12" tom tom	1		10" x 12" tom tom	1
	10" x 12" tom tom	1		10" x 12" tom tom	1
	10" x 12" tom tom	1		10" x 12" tom tom	1
	10" x 12" tom tom	1		10" x 12" tom tom	1

## ARTISTAR ES (Snow White)

ARTISTAR	DRUM KIT	1	MTB	ARTISTAR KIT	1
	10" x 12" tom tom	1		10" x 12" tom tom	1
	10" x 12" tom tom	1		10" x 12" tom tom	1
	10" x 12" tom tom	1		10" x 12" tom tom	1
	10" x 12" tom tom	1		10" x 12" tom tom	1
	10" x 12" tom tom	1		10" x 12" tom tom	1
	10" x 12" tom tom	1		10" x 12" tom tom	1
	10" x 12" tom tom	1		10" x 12" tom tom	1
	10" x 12" tom tom	1		10" x 12" tom tom	1
	10" x 12" tom tom	1		10" x 12" tom tom	1

## BASS DRUM SPUR BRACKET MSB25



Simple but strong. Spurs can be pulled out and inserted in the side for storage and transport.

## BASS DRUM HEADS

Artstar ES bass drums are fitted with the Evans EQ Series head (EQ1) on the batter side, and the Tama Original Black Logo head on the front. Both heads are fitted with O-rings for mazing.



## ARTISTAR ES (Ocean Blue)

ARTISTAR	DRUM KIT	1	MTB	ARTISTAR KIT	1
	10" x 12" tom tom	1		10" x 12" tom tom	1
	10" x 12" tom tom	1		10" x 12" tom tom	1
	10" x 12" tom tom	1		10" x 12" tom tom	1
	10" x 12" tom tom	1		10" x 12" tom tom	1
	10" x 12" tom tom	1		10" x 12" tom tom	1
	10" x 12" tom tom	1		10" x 12" tom tom	1
	10" x 12" tom tom	1		10" x 12" tom tom	1
	10" x 12" tom tom	1		10" x 12" tom tom	1
	10" x 12" tom tom	1		10" x 12" tom tom	1



## ACCU-TUNE HOOP

Accu-tune hoops made of Glass Fiber Reinforced Plastic (GFRP) provide greater durability and easier tuning. These strong hi-tech hoops use tension bolts instead of clawhooks.

MAH20-8 (20", 8 holes)

MAH22-8 (22", 8 holes)

MAH24-10 (24", 10 holes)





Tim Alexander



Kenny Aronoff



Frank Beard  
(ZZ Top)



Charlie Benante  
(Anthrax)



Dale Crover  
(Melvins)



John Dettly  
(Slayer)

©1996 P.O. Brando / Republic



Liberty Devitto  
(Billy Joel)



Chris Ethimiadis  
(Rage)



Paul Bostaph



Bill Bruford  
(King Crimson)



Eveline Carels

©Rob Doolittle



Joey Castillo  
(Vince Neil)



Alfredo Golino



Alain Gozto



Rayford Griffin



Earl Harvin  
(Seal)



Randy Castillo  
(Ozzy Osbourne)



Stewart Copeland



Jim Copley  
(Paul Rodgers, Psychodelia)



Kirk Covington  
(Tribal Tech)

Photo by Neil Zeman ©1995



Rodney Holmes  
(Wayne Shorter)



Uli Kusch  
(Helloween)

©CHRIS-MARTIN INSLEY



Leonardo



Dave Lombardo  
(Grip Inc.)

## Star-Cast Mounting System

Licensed under Patented Patents

When you pick up a tom by the rim and hit it, it resonates much more freely and has greater sustain than when you mount the tom on a standard tom holder. With the hand held tom, vibrations aren't absorbed by the shell mounting hardware and tom holder. There's also no stress on the shell caused by the weight of the shell itself hanging on the mounting hardware which also can reduce resonance. And because the tom is totally isolated when you hold it by hand, there's obviously no conflict with the vibrations from other toms or the bass drum.

Every aspect of the Star-cast mounting system was designed to provide the same kind of total tom isolation, natural feel and uncorrupted vibration that you experience with a hand held drum.

How was that achieved? First, Star-Cast has no shell mounting hardware. That's also true of some other hoop suspension, low suspension tom systems, but with Star-Cast the toms are mounted on special metal brackets that are attached to ultra strong tie rods. So there's no pinching or choking of the rim as with systems that use standard style flanged hoops. Star does the Star-Cast system interface with the tuning bolts. Which means Star-Cast provides both even consistent and longer lasting tuning than other hoop suspension tom systems. Because of the ingenious simplicity of Star-Cast, both head changing and packing up at the end of the night are a breeze.

To reduce unwanted vibration traveling through the bolts that secure the rim in the bracket, each bolt is encased in hard rubber and the top and bottom threaded rods are not connected (see illustration below). Not only are these rim attachment bolts connected to provide minimum hoop stress, their hardware is actually calibrated to the size and weight of the drums they support. In addition, rubber isolation here has been used throughout the entire system to eliminate any metal-to-metal contact.

The bottom line is that every facet of the Star-Cast system was designed to provide superior low vibration, complete shell resonance and studio quiet performance. And while the Star-Cast system was originally designed for the super-dry shells of Starbrite, it can also significantly improve the resonance of other shells as well.

### STAR-CAST MOUNTING SYSTEM

The Star-Cast Mounting System consists of ultra-strong Star-Cast hoops of die-cast zinc, bracket arms that have been specifically angled and sized for each tom, and the MTR100 mounting bracket.

SIZE	Star-Cast Hoop	Star-Cast Tom Mounting Bolt (with 3/8" bracket)	STAR-CAST MOUNTING BRACKET
For 8" Tom	MTR08-08" x MTR08	= MTR08	MTR08
For 10" Tom	MTR10-10" x MTR10	= MTR10	MTR10
For 12" Tom	MTR12-12" x MTR12	= MTR12	MTR12
For 14" Tom	MTR14-14" x MTR14	= MTR14	MTR14
For 16" Tom	MTR16-16" x MTR16	= MTR16	MTR16



Star-Cast's rubber mounting bolts are easily removed by hand as toms can be removed quickly and easily from the mounting system.



Separate top and bottom threaded rods substantially reduce vibration traveling through the bolts.



### UNIVERSAL STAR-CAST MOUNTING SYSTEM



The Star-Cast mounting system is now available with multiple hoop placements so it can be used with the mounting brackets of almost any other brand of drums.

Universal Tom (reference only)	Universal Tom (reference only)
For 8" Tom	MTR08-08"
For 10" Tom	MTR10-10"
For 12" Tom	MTR12-12"
For 14" Tom	MTR14-14"
For 16" Tom	MTR16-16"



## STAR-CAST AIR RIDE SNARE MOUNTING SYSTEM

PAT. PEND.

By incorporating the Star-Cast Mounting System, the AIR RIDE frees snare drums from the sound-dampening three "claws" of the traditional snare stand. Additionally, the "feel" and response of the snare drum is now more consistent with the rest of the set than a traditionally mounted snare. Most importantly, the increase in snare drum power and sensitivity the AIR RIDE offers is something that has to be experienced.

### AIR RIDE SNARE STAND HL800R

Traditional stands won't fit snare under 15", but the L-Arm on the AIR RIDE stand easily adapts to smaller snares. The heavy duty L arm can actually be removed and stored in a snare bag or hardware case should you want to retain the same angle for fast set up. Tama's Onsrail system allows adjustments to any angle.



Tama Onsrail provides completely flexible angle setting.



Patented L-Arm with positive clamping for 12", 15" and 14" diameter snare drums.

### Star-Cast AIR RIDE Snare Mounting System

Air Ride Snare Mounting System	Depth
For 12" (thick) Snare Drum	MTR12-12" 9" to 11"
For 12" (thick) Snare Drum	MTR12-12" 9" to 11"
For 14" (thick) Snare Drum	MTR14-14" 11" to 13"
For 14" (thick) Snare Drum	MTR14-14" 11" to 13"

Snare stands and snare drums are not included.



### STARCLASSIC SNARE DRUM AND AIR RIDE SYSTEM COMPLETE KIT

The addition of the AIR RIDE to the already superior resonant Starclassic snare drum results in a drum of astonishing sensitivity and resonance.

### DIE-CAST HOOPS

Die-Cast hoops offer a tighter and more powerful tone as well as durability, consistency and easier tuning.

For Toms	Die-Cast Hoops	Star-Cast Hoops	Die-Cast Hoops	Star-Cast Hoops
12" 5.0mm	MTR12-5.0	MTR12-5.0	12" 5.0mm	MTR12-5.0
12" 5.0mm	MTR12-5.0	MTR12-5.0	12" 5.0mm	MTR12-5.0
12" 5.0mm	MTR12-5.0	MTR12-5.0	12" 5.0mm	MTR12-5.0
12" 5.0mm	MTR12-5.0	MTR12-5.0	12" 5.0mm	MTR12-5.0

For Snare	Star-Cast Hoops	Star-Cast Hoops
12" 5.0mm	MTR12-5.0	MTR12-5.0
12" 5.0mm	MTR12-5.0	MTR12-5.0
12" 5.0mm	MTR12-5.0	MTR12-5.0
12" 5.0mm	MTR12-5.0	MTR12-5.0

## STARCLASSIC SERIES

With a minimum of shell/hardware contact and the warmth and

clarity of this 5mm maple shells, these 3 legs per side Starclassic snares beautifully recreate the sound of the good old days.

### DIE-CAST HOOPS

Die-cast hoops have long been the preferred choice on professional snare drums because of their strength, consistency and ease of tuning as well as helping snare drums provide clear highs and explosive, penetrating rim shots.

- SD114-4 (14", 8 holes for batter side)
- SD114-6 (14", 8 holes for snare side)
- SD116-10 (16", 10 holes for batter side)
- SD116-10 (16", 8 holes for snare side)
- SD120-6 (17", 6 holes for batter side)
- SD120-6 (17", 8 holes for snare side)
- SD120-6 (17", 8 holes for batter side)
- SD120-6 (17", 8 holes for snare side)

### STARCLASSIC QUILTED MAPLE SHELLS

5-1/2"x14" and 6-1/2"x14" Starclassic snare drums are also available with outer plies of exceedingly beautiful quilted maple in three different colors: Charcoal Quilted, Natural Quilted and Cranberry Quilted.

### PREMIUM MAPLE SHELLS



SD11400C Color:NTQ (Natural Quilted)

SD11600C Color:CRQ (Cranberry Quilted)

SD11400F Color:CLQ (Charcoal Quilted)

Color:SMF (Super Maple)

### SFR (Sound Focus Ring)

Starclassic snare drums now come standard with Sound Focus Rings for a tighter, more focused sound.



### OPTIONAL ORDER

Starclassic snare drums are available with gold shell hardware by custom order.

Starclassic snare drums can also be ordered with the Air-Fade Snare Mounting System.



\*To order Starclassic Snare Drums gold parts, simply add the letter "G" to the end of the drum model number (ex. SD11400F to SD11400FG). To add the AIR-FADE System (including the mounting system stand), add the letter "L" & "A" to the end (ex. SD11400F to SD11400FLA). Please see page 25. Gold hardware option on snare drums does not include tension rods.



Color:HNG (Honey Gold)

## ARTWOOD SERIES

### MAPLE

The renowned clarity, warmth and cutting edge of the Artstar 9-ply 7mm maple shell combined with the classic Artwood snare drum format.

### Artwood Maple Snare Drums (7mm thickness Maple shell)

Shell Material	Size	Model No.	Hoops	Lugs	Strainer/Shell	Snappy
Premium Maple Shell	5-1/2" x 14"	AM225	Steel Mighty	MSL33	MPUSA/NC3006	MS205C14B
	5-1/2" x 14"	AM255	Steel Mighty	MSL35	MPUSA/NC3006	MS205C14B
	6-1/2" x 14"	AM265	Steel Mighty	MSL36	MPUSA/NC3006	MS205C14B



**STEEL MIGHTY HOOPS**  
The low profile of a triple flanged hoop with the strength and resonance of 2.3mm steel.

- SD114-10 (14", 10 holes for batter side)
- SD116-10 (14", 10 holes for snare side)



Color:NRB (Natural Black)

### BIRCH

Bulk is the tradition of Tama's famous Supastar drums, Artwood birch shell snare drums offer a harder, quicker attack and greater low-end response than maple snare drums.

### Starclassic Snare Drums (5mm thickness Maple shell w/Sound Focus Ring)

Shell Material	Size	Standard Model	With Gold Parts	Hoops	Lugs	Strainer/Shell	Snappy
Premium Maple Shell	5-1/2" x 12"	SD11200F	SD11200G	Die-Cast	MSL-3CT	SD11200G	MS205C12B
	5-1/2" x 12"	SD11200F	SD11200G	Die-Cast	MSL-3CT	SD11200G	MS205C12B
	5-1/2" x 14"	SD11400F	SD11400G	Die-Cast	MSL-3CT	SD11400G	MS205C14B
	5-1/2" x 14"	SD11400F	SD11400G	Die-Cast	MSL-3CT	SD11400G	MS205C14B
	5-1/2" x 14"	SD11400F	SD11400G	Die-Cast	MSL-3CT	SD11400G	MS205C14B
Quilted Maple Shell	5-1/2" x 14"	SD11400F	SD11400G	Die-Cast	MSL-3CT	SD11400G	MS205C14B
	5-1/2" x 14"	SD11400F	SD11400G	Die-Cast	MSL-3CT	SD11400G	MS205C14B

### Artwood Birch Snare Drums (7mm thickness Birch shell)

Shell Material	Size	Model No.	Hoops	Lugs	Strainer/Shell	Snappy
Premium Birch Shell	5-1/2" x 14"	AB225	Steel Mighty	MSL33	MPUSA/NC3006	MS205C14B
	5-1/2" x 14"	AB255	Steel Mighty	MSL35	MPUSA/NC3006	MS205C14B
	6-1/2" x 14"	AB265	Steel Mighty	MSL36	MPUSA/NC3006	MS205C14B



### BELL BRASS

Yes, you could buy an entire drum set for the price of one of these beauties. But no other snare drums will put the sheer, undeniable power of bell brass at your command. Bell brass snare drums can cut through walls of amplified sound with ease, yet are also capable of astounding warmth and sensitivity.

#### Power Metal Bell Brass Snare Drums

Shell Material	Size	Model No.	Hoops	Lugs	Strainer/Butt	Snappy
Bell Brass Shell	3-1/2" x 14"	PL3225	Bell Brass	MSL33	MP300/MC300B	MS200C145
	5-1/2" x 14"	PL365	Bell Brass	MSL36	MC300A/MC300B	MS200C145

## POWERMETAL SERIES

### BRASS MIGHTY HOOPS

Provide stronger lugs, great looks, and penetrating rim shots.

MP314-10 (34", 10 lugs for better side)  
MP314-10 (34", 10 lugs for better side)

### BRONZE

The sound character of bronze is bright like other metal snares, but with a blend of the warmth of wood snares. The addition of Brass Mighty Hoops augments the tonal clarity of these great sounding drums.

#### Power Metal Bronze Snare Drums

Shell Material	Size	Model No.	Hoops	Lugs	Strainer/Butt	Snappy
Bronze Shell	3-1/2" x 14"	PB3225	Brass Mighty	MSL33	MP300/MC300B	MS200C145
	5-1/2" x 14"	PB365	Brass Mighty	MSL36	MC300A/MC300B	MS200C145



### STEEL MIGHTY HOOPS

A 3-line track style finger lug with the powerful attack and resonance of steel.

MP314-10 (34", 10 lugs for better side)  
MP314-10 (34", 10 lugs for better side)

### STAINLESS STEEL

Stainless steel shells provide sharp, powerful sound with a strong attack.

#### Power Metal Stainless Steel Snare Drums

Shell Material	Size	Model No.	Hoops	Lugs	Strainer/Butt	Snappy
Stainless Steel Shell	3-1/2" x 14"	PS3225	Steel Mighty	MSL33	MP300/MC300B	MS200C145
	5-1/2" x 14"	PS365	Steel Mighty	MSL36	MC300A/MC300B	MS200C145

## SNARE ACCESSORIES



### SNARE LUGS

New design snare lugs combine the minimum shell contact needed for full snare sound with maximum durability needed for the extreme tensions exerted by snare tension bolts.

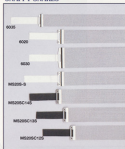
### EXTERNAL MUFFLER 6553

Outer side muffler allows the shell to vibrate freely while still offering fully adjustable muffling.



### DRUM KEY 6360

### SNAPPY SNARES



### REGULAR SNAPPY SNARES

Provide a powerful snare drum sound with the right amount of attack.

6035 (for 14" diameter, 20 strands, extended)  
6030 (for 14" diameter, 20 strands)  
6030 (for 14" diameter, 30 strands)

### STEEL SENSITIVE SNAPPY SNARE

Thicker coils than standard snappy snares for quicker response.

MS200-S (for 14" diameter, 20 strands)

### STARCLASSIC SNAPPY SNARES

Coils are slightly softer, thinner and longer than standard snappy snares for a warmer snare drum sound.

MS200C145 (for 14" diameter, 20 strands)  
MS200C135 (for 12" diameter, 20 strands)  
MS200C125 (for 12" diameter, 30 strands)

### SNAPPY STRAPS



MST22  
Made of a special double woven in a pattern of diagonal lines so it's extremely resistant to stretching.



SPC40D  
Many drummers will prefer strings to straps for even centering. Tama's version features strings made of ultra strong Kevlar.\*



SPT20  
Tama's standard plastic strap is extremely resistant to stretching or tearing.

### NON-LOOSENING WASHER

MSL-PWS  
2.5mm thickness nylon washers increase tuning stability and decrease noise.



### CAM LEVER PICCOLO STRAINER MP330/MC330B

New design for piccolo snares. Maximum rigidity and adjustability.



### CAM LEVER STRAINER MC300A/MC300B

Minimum tension when activated and tension adjustments are possible while snare is in contact with the head. Features nylon adjustment lock.



### POWER ACTION STRAINER 6302/6303

The standard of the industry. Security strains the snare and can't be accidentally thrown off.



### STRAINERS & BUTTS

\*Kevlar is a wholly owned trademark of the Dupont corporation.

## TYP-TOM STARCLASSIC MAPLE

Single headed and half the depth of a deep-sided tom, Tama's newest percussion instrument provides a sound different than a concert tom and lighter and brighter than a double-headed tom. Tama's Typ-Tom utilizes a 9 ply, 5mm Starclassic Maple Series shell fitted with the Star-Cat Mounting System for total resonance.

SIZE	MODEL NO.
12" X 8"	TSM8
14" X 10"	TSM9
16" X 12"	TSM10
18" X 14"	TSM11
20" X 16"	TSM12
22" X 18"	TSM13
24" X 20"	TSM14



# TAMA ORIGINAL PERCUSSION

Tama's original design percussion instruments embody the creativity of the musicians who inspired them.



## OCTOBARS

One of Tama's first original instruments. Made famous by players such as Simon Phillips and Stewart Copeland and now used by new artists such as Tim Alexander. Octobars come in low and high pitch models of 5" shells of incremental depths which can be tuned melodically.

DEPTH	MODEL NO.
280mm (11")	OCT180
301mm (11.8")	OCT181
321mm (12.6")	OCT182
341mm (13.4")	OCT183
361mm (14.2")	OCT184
381mm (15")	OCT185
401mm (15.8")	OCT186
421mm (16.6")	OCT187
441mm (17.4")	OCT188
461mm (18.2")	OCT189
481mm (19")	OCT190



## GONG BASS

The Gong Bass drum features a single sided 20" bass drum fitted with a 22" head and rim. Innovative yet timeless, and with excellent sustain, the Gong Bass drum offers a completely different sound than a bass drum or floor tom. The innovative H20000 roadway stand is available separately for easy secure positioning.

**AE20R (GONG BASS)**  
**H20000 (ROADWAY STAND)**



## TAMA BLACK COWBELLS

By using just the right thickness of steel, Tama has created four cowbells with commanding power and projection.

6306 8" COWBELL	6304 4" COWBELL
6306 8" COWBELL	6311 U-CLAMP
6305 6" COWBELL	6310 COWBELL HOLDER



## The First Choice in Thrones for the First Chair Player

When people choose the components of their drum sets, the throne is often an afterthought at best...but it should really be the first on the list. Think about it—when you have to sit on a drum throne for hours of physically demanding activity, comfort isn't a luxury. It's an absolute necessity. Because as a drummer your stamina, your flexibility and your creativity are directly affected by your level of comfort.

1st Chair Drum Throne Systems were designed for the first chair level of player—drummers who insist on the right equipment so they can consistently play their very best. By listening to the needs of the best players and reviewing every aspect of throne design, Tama has achieved the highest level of throne stability, flexibility and durability to date.



## THE ULTIMATE IN HEIGHT ADJUSTMENT

pat. pend.  
When drums today offer two ways of adjusting height, the threaded rod system (plastic rod style), and the lock-wrench rod clamping system. Both have advantages and disadvantages.

Spinning the seat on the threaded rod system allows you to get exact heights easily, but major height adjustments take too much time. Major adjustments are faster with the lock-wrench system—but getting just the right height often requires a lot of frustrating trial and error.

1st Chair Thrones ingeniously combine the best of both worlds. The base section features a 1/2 inch wide a nylon banding for fast height adjustments. However, the rod and key lock (Pat. Pend.) are threaded for more exact adjustments. After you quickly set the base height with the 1/2 inch band, you screw the Hex-Lok down to the base. Now the 1st Chair works as a threaded rod throne to get the exact height—but with none of the limits of a threaded rod throne.



## ROUND RIDER HT410

The traditional drummer seat shape—yet an exceptionally large size. The Round Rider's 15.5-inch diameter, 9mm thick seat is filled with comfortable foam padding which is removable.

Available height range from the top of the seat to the floor:  
440mm - 630mm (17.3" - 25")

## STAGEMASTER HT55-L

Tama's popular and very affordable double sided drummer with a 15" diameter round seat.



## FOOT-LOCK

pat. pend.  
A problem with drum seats (not just thrones) is that the stand leg's direct metal contact with their rubber feet causes the rubber feet wear out quickly. But 1st Chair Thrones feature the FootLock, an innovative plastic attachment on the legs that results in much less wear and tear for longer foot life.



## ROCKLOCK

pat. pend.  
This specially designed elastic collar at bottom of the throne rod prevents unwanted side-to-side motion inside the sitting.



## WIDE RIDER HT510

The HT510 Wide Rider features the same shape as Tama's popular HT500 Bicycle seat shaped throne. But the HT510 is even wider for complete comfort during even the longest playing sessions. Plus the HT510's seat features urethane foam padding which will hold its comfortable shape for years to come.

Available height range from the top of the seat to the floor:  
630mm - 630mm (25.2" - 24.8")

## STANDARD HT310

For drummers who want 1st Chair's set-up advantages, but with a seat of traditional size and padding.

Available height range from the top of the seat to the floor:  
440mm - 630mm (17.3" - 24.8")



## SET-TIGHT

Review of the huge amount of drum sets are submitted to, drum set breakers have an understanding high failure rate. But 1st Chair's new Set-Tight chair drum throne seat bracket features a unique multi-rod design for greater bracket strength and longevity.

The Set-Tight bracket also features Tama's super strong Multi-Clamping system which grips the throne rod much more securely than a standard 1 inch. Plus this multi-rod design allows 1st Chair Thrones seats to be used with almost any other brand of throne base. (1st Chair's Set-Tight bracket will fit the top of throne rods between 15.1mm and 25.1mm in diameter. These popular diameters, 19.1mm, 22.2mm, and 25.1mm are indicated on the bracket for quick adjustment.)

The Iron Cobra is the fastest, most adjustable, most durable pedal ever made. Not to mention the only truly "upgradable" pedal.

All of that's important. But when you get right down to it, it's how a pedal feels that really makes the difference. This catalogue will show you the features that make the Iron Cobra the most adjustable, most versatile, most upgradable, etc., etc. But to really understand what the Iron Cobra can do for your playing, you have sit down and experience it first hand. Once you actually play it, you'll understand why drummers the world over agree...the feel is unreal!!

## The IRON COBRA... Precision, Power, Speed, Durability



**Power Glide (pat. pending) HP90P-5**

The heart of the HP90P is the Power Glide cam. Not an ordinary sprocket or cone, the Power Glide is shaped so that its radius actually becomes shorter as the beater nears the bass drum head. This is what gives the HP90P its accelerated response. A double chain provides superb durability and prevents side-to-side chain motion.



## IRON COBRA POWER GLIDE PEDAL



**Speedo Ring HP90P-6**  
US PAT. No. 5,280,894  
Aside from unlimited footboard positioning, the Speedo Ring also contributes to the Iron Cobra's overall speed and smoothness by incorporating a roller mounted spring post. This prevents any spring loading that may occur during normal playing.



**Spring Tight HP90P-7**  
US PAT. No. 5,280,824  
The Spring Tight is a special triangular shaped locking nut that eliminates excessive loss caused by spring slippage during single but effective.



**Beater Balancer BC7**  
The Iron Cobra's beater balancer can quickly achieve radical changes in feel...without taking the pedal apart. Great for players who like different responses for recording and performing situations.



**Cobra Beater Head**  
US PAT. No. 5,277,768  
While conventional beaters only strike a small, pin-point area, the Iron Cobra's adjustable beater angles guarantee a full hit with full tone every time.

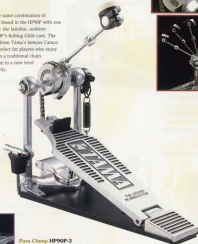


**Footboard Adjustment**  
The Speedo Ring provides unlimited footboard angle adjustment possibilities.

## IRON COBRA ROLLING GLIDE PEDAL

### HP90P

The HP90P offers the same combination of professional features found in the HP90P with one significant difference: the familiar, uniform response of the HP90P's Rolling Glide cam. The HP90P is descended from Tama's famous Canoco Chain pedal so it's perfect for players who enjoy the response found in a traditional chain drive pedal, but aspire to a new level in speed and sensitivity.



**Para Clamp HP90P-3**

Keeps the Iron Cobra flat on the ground no matter how your bass drum is angled. A movable hard plastic grip prevents damage to the bass drum hoop.



**Vario Pitch Beater Holder HP90P-4**  
US PAT. No. 5,287,807

The Iron Cobra's Vario Pitch feature allows you to make beater arm angle adjustments completely independent of adjustments to the footboard. The adjustment is made by loosening a small set screw on the underside of the Vario Pitch beater holder.



**Cobra Stabilizing Plate HP90P-92**

The Cobra Stabilizing Plate helps reduce noise and eliminates pedal "creep." A plus for any drummer, but a must for the heavy duty player.



**Rolling Glide HP90P-5**

The redesigned Rolling Glide cam features an open channel with less tracking teeth. The result is less metal-to-metal contact for extra radio-quiet operation. The placement of track guides on both sides of the cam ensure that the Rolling Glide chain remains centered during even the most demanding performances.



**Tight Lock TLK5**

Eliminates the possibility of the beater shaft loosening from the beater holder. A special locking nut secures the set screw.



**Toe Stopper HP90P-81**

So simple...yet some players have actually called the Toe Stopper their favorite Iron Cobra feature. Almost mandatory for players doing sliding double and triple bass drum patterns.



**Hammer Holder HB5**

Makes sure the Drum Hammer is always easily accessible for fast adjustments.





**Power Glide**  
A double chain provides superb durability and prevents side-to-side chain motion.



#### HP90TW

The HP90TW's Power Glide can be shaped so that its radius becomes closer to the beater near the bass drum head. This provides added acceleration and power as the pedal reaches the end of its stroke.

Because twin pedals allow drummers to expand the range of their playing abilities without expanding the size of their set-up, the number of players using twin pedals has increased dramatically. Another reason is the improvement in twin pedal design and response made over the last few years. As Iron Cobra twin pedals offer the same great feel, speed, and unlimited adjustability of their single counterparts, they represent the highest point in the evolution of the twin pedal.



#### Twin Pedal Attachment

The TPA320 prevents twin pedals from "walking" by anchoring the auxiliary pedal to the hi-hat stand. One more feature that makes the Iron Cobra an absolutely perfect pro pedal.



#### HP90TWL

The hi-hat mounted version of the HP90TW Rolling Glide Twin Pedal.

## CAMCO Drum Pedals

It is amazing. After more than two decades, the Camco Chain Pedal remains one of the most in-demand pedals by pro players. Other than the sprocket material being switched to cast aluminum for increased accuracy, the HP15's basic construction hasn't changed. Then again, the incredible response, feel and speed haven't changed either. So maybe the Camco pedal's continued popularity isn't so amazing after all.



HP35TW



HP35



#### Adjustable Beaters



Until now, one of the most annoying disadvantages of twin pedals was that adjusting one beater always affected the other. Not so with the Iron Cobra. The Iron Cobra Twin Pedal beater holder allows both beater angles to be adjusted independently. Another major advance in double pedal technology.

## Double the Power IRON COBRA Twin Pedals



## The Secret of the Cobra... Why the Feel is Unreal

Nearly every pedal made uses roller bearings for smooth operation. However, these pedals also use locking nuts on both ends of the axle to keep it from coming loose. Unfortunately, these locking nuts apply pressure to the sidewalls of the roller bearings. This acts like a "brake" on the bearings.

Iron Cobra pedals use a completely different system. Instead of pressure being exerted directly on the bearing wall, concentric collar locks support the inner and outer races of the roller bearing. This means that no pressure is being applied to the sidewall or roller portions of the bearing. This results in an almost "frictionless" instrument.

It's a small but real difference that makes the Iron Cobra feel unreal.



HP90D

The Iron Cobra HP90D Power Glide Deluxe is the same basic pedal as the HP90P Power Glide Professional pedal. Some durability and some accelerated response — the only differences between the two are the available professional upgrade features.

The beater shaft and footboard can be adjusted to three different angles by moving the rocker arm position.



**Rolling Glide**  
The HP90D utilizes the HP90P-S Rolling Glide cam.

Like the HP90D, the HP90D Rolling Glide Deluxe can easily be upgraded to professional status with Iron Cobra's available professional parts (pictured on the following page).



HP80D

## HP20 Series



HP20



HP20TW

Taylor's HP20 and twin HP20TW standard pedals are affordable in price, but still absolutely professional in quality and response. You can quickly choose from two different sounds on both models by flipping the D120 dual-sided beater.



## IRON COBRA UPGRADE PARTS

Because Iron Cobra bass drum pedals are fully upgradeable, Deluxe (D) Iron Cobra pedals are easily transformed into Professional (P) models. Players can simply add any or all of the professional features: Vari-Pitch, Speedo Ring, Spring Tight, Toe Stop.

All Iron Cobra pedals are also convertible: Iron Cobra Rolling Glide and Power Glide cams are completely interchangeable, so while your entire playing style may change, your entire pedal doesn't—just the cams!



**Tight Lock TLKS**  
Double locking system that securely holds the beater during even the most pounding bass drum playing. Very simple, but very effective.



**Spring Tight HPSP-7** (S/N 101 to 100000)  
Spring tight stops the return spring from rotating side to side. The special stop nut prevents the spring from loosening.



**Spring**  
**HPSP-7H, HPSP-7L**  
Two new options in spring tension are offered for different preferences in pedal response. For higher tension, the HPSP-7H. For lower tension, HPSP-7L.



**Beater Balancer BC7**  
Quickly achieve radical changes in level... without taking the pedal apart. Great for players who like a different response in recording and performing situations.



**Twin Pedal Attachment TPA20**  
Connect your double pedal to a hi-hat stand for increased stability.



**Tune Up Oil TOL2**  
Tune Up Oil helps keep your Iron Cobra pedal performing at its optimum.



**BEATER HEADS**  
**CB30FH FELT**  
**CB30RH RUBBER**  
**CB30WH WOOD**

Different head materials offer the quickest way to make significant changes in bass drum tone.



**Drum Hammer D117**



**BEATERS**  
**D620 DUAL SIDED BEATER**  
**CB30F FELT FACE BEATER**  
**CB30R RUBBER FACE BEATER**  
**CB30W WOOD FACE BEATER**  
**6715 FELT BEATER / MEDIUM**  
**6712 FELT BEATER / LARGE**  
**6714 WOOD BEATER**



**Para Clamp HP90P-3**

Keeps the Iron Cobra fast on the ground no matter how your bass drum is angled. A moveable hard plastic grip prevents damage to the bass drum body.



**Vari-Pitch Beater Holder HP90P-4** (S/N 101 to 100000)

Allows the beater angle to be adjusted independently from the rest of the pedal's adjustments.



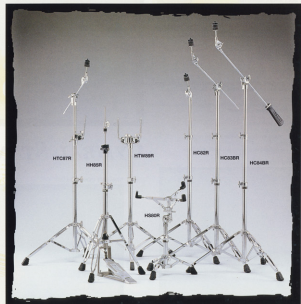
**Speedo Ring HP90P-6**

This new piece has beater heads in to eliminate the friction between the rocker and the spring unit. The ring also serves as an angle adjuster for the footboard and the beater shaft.

## THE NEW STANDARD IN STRENGTH

The NEW TITAN line is Tama's newest series of innovative drum hardware. NEW TITAN features the same double-braced strength of the original Titan as well as some new features all its own such as convertible booms and the Security hi-hat clutch.

**Titan**  
THE NEW STANDARD IN STRENGTH



**BOOM CYMBAL STAND with Counter Weight HC88BR**

At home in any playing situation, this totally convertible boom cymbal stand can function as a boom stand with or without counterweight or a straight stand.

**BOOM CYMBAL STAND HC88BR**

Like the HC88BR, the NEW TITAN HC18BR boom stand can be converted into straight stand by moving the boom arm in the upper tube.

**STRAIGHT CYMBAL STAND HC82R**

Easy to operate, stable stand with double brand legs.

**HI-HAT STAND H815R**

Heavy duty model with direct pull system. Features swivel foot and spring tension adjustment.

**DOUBLE TOM STAND H240BR**

Heavy duty stand with MT1000 and modified boom.

**COMBINATION STAND H1C67R**

Heavy duty combination tom/cymbal unit with standard boom.

**SNARE STAND H500R**

Stable stand with disk brake filter.



A significant NEW TITAN series innovation: air flow speed threaded steel inserts for the T-tube adjustment sections. This feature provides more secure tightening and greater stand longevity.



**STILL CYMBAL STAND** U.S.PAT. #988064  
Tama's Titan tilt feature allows stands to be angled towards the player for (1) complete set-up flexibility even on cramped stages, (2) greater mobility because the base of the stand cymbal stands in a straight line, and (3) a streamlined, custom-set appearance.

#### DOUBLE BOLT ANGLE ADJUSTER (HC34B, HC93B)

Allows separate adjustment of boom arm length and angle. If boom arm is retracted from stand for rear down, the boom arm angle can be left set.



#### TOUCH LOCK SYSTEM U.S.PAT. #4877092 (HC104TB, HC34B, HC93B, HC92)

Tama's original one-touch locking system "reverses" the right locking technique for fast and secure height adjustment.

#### TITAN STILT

In 1989 Tama added STILT, a unique stand tilting feature, to the renowned heavy-duty Tama Titan hardware line.

#### HC104TB TELESCOPING BOOM

Heavy duty boom stand with telescoping arms and counterweight. Recommended for use with larger cymbals or cymbals set at high height.

#### HC94B BOOM

Longer boom arm with counterweight.

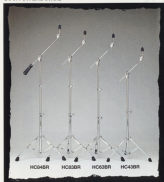
#### HC93B BOOM

Shorter boom arm (tiltable) without counterweight for closer set-ups.

#### HC92 STRAIGHT

Straight stand but can be angled like a boom thanks to tilt tilting feature.

#### BOOM CYMBAL STAND



**Booms & Straight Convertible Tilter**  
Allows conversion from boom to straight stand by rotating the boom in the upper roller.



**Detachable Counterweight**

#### NEW TITAN

**The New Standard in Strength**

**HC48BR**  
Converts from boom to straight stand with boom & straight convertible tilt. Also features detachable counterweight.

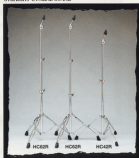
**HC38BR**  
With boom & straight convertible tilt. Shorter boom arm than HC48BR for closer set-ups. Double braced legs.

**HC42R**  
Easy to operate, stable stand with double braced legs.



## CYMBAL STANDS

#### STRAIGHT CYMBAL STAND



#### STAGEMASTER

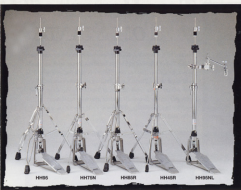
Light in weight and affordability - but still being *any in durability*. Tama's Stagemaster line is often referred to as the light weight Titan.

**HC38BR**  
Lightweight boom stand with double braced legs. With boom & straight convertible tilt.

**HC52R**  
Lightweight, but with double braced stability.

**HC38BR**  
Lightweight boom stand. With boom & straight convertible tilt.

**HC42R**  
Tama's standard lightweight straight stand.



#### HH05 (Lever Glide) TITAN

The top of the Lever Glide line. Swivel Foot allows the tripod to rotate which avoids interference with twin pedals. Spring Tension Adjustment provides visual indication of tension level. Tilt system can adjust the angle of the hi-hat up to four degrees. Heavy duty double-braced legs for complete stability.

#### HH07M (Lever Glide)

Standard Lever Glide model with Swivel Foot and Spring Tension adjustment. The HH07M features heavy duty Titan piping, but with single braced legs for lighter weight.

#### HH08R NEW TITAN

Heavy duty model with direct pull system. Features Swivel Foot, Spring Tension adjustment and double braced legs.

#### HH15R STAGEMASTER

Standard model with direct pull system. Swivel Foot and Spring Tension Adjustment.

#### HH05S6 (Lever Glide) TITAN

Lightweight Lever Glide high hat with Spring Tension Adjustment. Excellent for double bass sets. Includes all connecting hardware including X312 hi-hat attachment.



## HI-HAT STANDS

#### X-HAT HH05S6

Another Tama original. The X-Hat can be adjusted from click-click tight to wide open for a colorful shatter. Great for the double bass drummer.



#### CABLE HAT HH05S6

Position it anywhere. The ease of the Tama Lever Glide system really improves feedback response. Clarity not isolated.



#### HI-HAT ATTACHMENT 6323

Converts hi-hat to the bass drum so tripod legs can be closed. Almost a necessity for the double bass player. Includes multi-clamp and drum being secure.



#### SECURITY CLUTCH CL08

(0105R, 10105R) U.S.PAT. No. 4460574

Tama's new Security hi-hat clutch has removed almost every possibility of the clutch loosening. When the T-clutch is tightened, the rod presses the rod's surface to a retainer that is pressed on by both the bottom lock nut and top spacers for complete security. Standard on NEW TITAN HH08R and Stagemaster HH08R hi-hats.



## LEVER GLIDE

Maximum responsiveness with quick return is the ideal in a hi-hat.

Unfortunately, light response and responsiveness require a weak

spring while fast response with quick return requires a strong spring. The engineers at Tama solved the problem by combining a fulcrum piece with a patented linkage system. (U.S.PAT. #693662). Tama's revolutionary Lever Glide offers the most important advance in hi-hat technology in decades.

If you are looking to improve your hi-hat technique, it is worth your while to go to your Tama dealer and personally check out a Lever Glide equipped hi-hat. We believe you'll find out what so many drummers have told us: Lever Glide offers the fastest way to achieve significant improvement in hi-hat technique and control.



#### 5-WAY SPRING TENSION ADJUSTMENT

(U.S.PAT. No. 693662)  
Allows five different levels of spring tension. Each step adds 140 grams of tension.



#### TILT SYSTEM

Allows the entire hi-hat stand to be angled. The combination of 5th and Swivel Foot systems on the HH05 allows tilting at any angle.



#### SAFETY SEAT

The left and metal washer are attached to the seat which eliminates noise parts that can fall out. The bottom hi-hat cymbal can be angled.



#### SWIVEL FOOT

The footpad can be rotated around the tripod base. Greatly expands space and set-up flexibility.

## DOUBLE TOM STANDS



**HTW99 TITAN STELT**  
Heavy duty stand features MT9900R holder and 90° tilting system.

**HTW9R NEW TITAN**  
Heavy duty stand with MT1900 and standard base.



**MT1900M**  
Thanks to a unique modular design, the MT1900M can easily be transformed from double to single tom holder or to a cymbal/tom combination unit. Heights can be individually and easily adjusted. Very simple, but very strong.



Height and angle of both tom arms are adjustable.



L-Rod (Omniball) allows easy yet secure tom set-up.



**MT190000M**  
The lower part of the MT190000 (21.4mm pipe) which can be used as a single tom holder with a 19.1mm pipe such as the CA30 can be inserted to create a tom/cymbal combination unit.



**MT190000M**  
The upper part of the MT190000 (19.1mm pipe) can be used as a single tom holder where clamped by a MC5 or 66.



**MT190000M-MC5**

## TOM HOLDERS & TOM STANDS

Since 1974, Tama's L-Rod system has been the cornerstone of the Tama ideal of a freely vibrating drum without shell-penetrating hardware. So effective is this feature that it is still used on all Tama's tom holders and tom stands 27 years later. The combination of Tama's heavy-duty L-Rod with our nylon Omniball system provides total tom positioning flexibility, full drum shell vibration, and rock solid stability.

### SINGLE TOM STANDS



**HW100TS TITAN STELT**  
Heavy duty stand with tilting arm and counterweight. 90° function offers the ability for distant stand placement.

**HTC9T TITAN STELT**  
Tama's original combination tom/cymbal stand with 90° tilting base.

**HTC9TR NEW TITAN**  
Heavy duty combination tom/cymbal unit with standard base.

### MEMORY LOCKS

The use of memory locks to recall stand heights reduces set-up time.

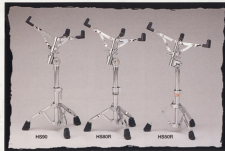


**ML254T** For tom holder base (25.4mm pipe diameter).

**ML19** For individual height adjustment (19.1mm pipe diameter).

**ML105** For mounting MT920 tom bracket position on L-Rod (10.5mm base pipe diameter).

**MTB30-2** Exclusively for MT900 tom holder (10.5mm pipe diameter).



**H590 TITAN**  
The original Titan double-braced snare stand with disk brake tilt and Tweak lock.

**H580R NEW TITAN**  
Double-braced snare stand with disk brake tilt.

**H550R STAGEMASTER**  
Standard model. Lightweight and compact with ratchet-style tilt.

## SNARE STANDS



**Disk Brake Tilt (Right)**  
Internal rubber locking ring allows multi-angle adjustments and provides totally secure locking. (H590, H580R)

**Gear Tilt (Left)**  
Standard gear (ratchet style) tilt (H550R)

## HARDWARE ACCESSORIES

### MEMORY LOCKS

Key locks "memorize" your adjustments for reduced set-up time and extra stability.



**ML222** 22.2mm diameter  
**ML254** 25.4mm diameter  
**ML25** 25mm diameter

### CYMBAL MATE & WASHERS



**7082** TAMA Original Cymbal Mate  
**7081** Feb Washer  
**7091** Male Washer



**CYMBAL HOLDERS**  
CA30 (short) / CA45 (long) / 62J  
Can be attached to cymbal stands with either MC5 and 66 clamps, or installed on FT9 drum racks with the 1/4" main holder.



**MC845** Boom arm (long)  
**MC830** Boom arm (short)  
**MT445** Ratchet arm (long)  
**MT430** Ratchet arm (short)

### MULTI CLAMPS



**66** Both sides of the 66-63 Purpose Multi Clamp can hold pipes with diameters from 18.5mm to 38mm. One side features an angle adjustment.

**MC5** One side clamps any pipe with a diameter of 19.1mm to 38mm. The other side will fit holders of 19.1mm diameter. Comes with ML19 memory lock.

**65** One side of the 65 clamps any pipe with a diameter of 19.1mm to 38mm. The other side fits holders of 25.4mm and features an angle adjuster. Comes standard with the H99504 S-HAT.

**62** One side fits pipes with a diameter from 18.1mm to 38mm. The other side holds LRT or cymbal boom arms and features an angle adjuster.



## HICKORY

	<b>HM1</b> Length: 15.3" (39mm) Grip Diameter: 17/32" (13.5mm) Comparable to 7A
	<b>HM2</b> Length: 16" (40mm) Grip Diameter: 18/32" (14mm) Comparable to 5A
	<b>HM3</b> Length: 16" (40mm) Grip Diameter: 18/32" (14mm) Comparable to 5B
	<b>HM4</b> Length: 16" (40mm) Grip Diameter: 41/64" (16.3mm) Comparable to 2B
	<b>HM5C</b> Length: 17" (43mm) Grip Diameter: 41/64" (16.3mm) TAMA original
	<b>HMN1</b> Length: 15.5" (39mm) Grip Diameter: 17/32" (13.5mm)
	<b>HMN2</b> Length: 16" (40mm) Grip Diameter: 35/64" (14mm)
	<b>HMN3</b> Length: 16" (40mm) Grip Diameter: 39/64" (15.5mm)



## Power Tools Sticks

Tama's Power Tools, with "specs" that make sense are made of the finest American Hickory and Japanese Oak. Power Tools perfectly balanced, long-lasting matched pairs are the closest thing to having your own customized stick.



## OAK

	<b>OM1</b> Length: 15.5" (39mm) Grip Diameter: 17/32" (13.5mm) Comparable to 7A
	<b>OM2</b> Length: 16" (40mm) Grip Diameter: 35/64" (14mm) Comparable to 5A
	<b>OM3</b> Length: 16" (40mm) Grip Diameter: 39/64" (15.5mm) Comparable to 5B
	<b>OM4</b> Length: 16" (40mm) Grip Diameter: 41/64" (16.3mm) Comparable to 2B
	<b>OM5</b> Length: 16.5" (41mm) Grip Diameter: 43/64" (17mm) Comparable to 300K
	<b>OM5C</b> Length: 17" (43mm) Grip Diameter: 43/64" (17mm) TAMA original
	<b>OMN1</b> Length: 16" (40mm) Grip Diameter: 35/64" (14mm)

# TAMA STICKS

\* All models are 406 mm long.

HEAD STYLE	MATERIAL	GRIP DIAMETER				
		13 mm	14 mm	15 mm	16 mm	17 mm
	POPULAR (P)	OAK HICKORY	21SP H21SP	214P H214P	215P H215P	216P H216P
		MAPLE	-	-	M216P	M217P
	TRUE ROUND (T)	OAK	-	214T	215T	-
		HICKORY	-	-	H215T	-
	SMALL (S)	MAPLE	-	-	-	-
		OAK	-	214S	215S	-
	BALL (B)	HICKORY	-	-	H215S	-
		MAPLE	-	-	-	-
	NYLON (N)	OAK	213B	214B	215B	216B
		HICKORY	H213B	H214B	H215B	H216B
		MAPLE	-	-	M216B	M217B
		OAK	313N	314N	315N	-
		HICKORY	-	-	H315N	H316N

## ACCESSORIES

### SILENT TIP TCP100

Silent practice with your own sticks...any style, anywhere.



### WOOD HOOP SAVER HHSS-5

Reduces the stress and tear on wood hoops caused by bass drum pedal clamps.



### POWER KICK PK100

Lightweight and elastic with ten right sound dampening modules for bass drums...and it looks a whole lot better on stage than a blunder.

### TRAINING PAD TP10 & HC22

The TP10 is built and responds just like a real drum because it utilizes an actual 8" diameter, tension adjustable drum head.

### TRAINING PAD STAND HC22

Central stand type design allows both pad height and angle to be adjusted. The HC22 can also be used to mount Tama's WR100 Rhythm Watch metronome.



### BASS DRUM ANCHOR 6348

Pin in end to bass drum "coping." Help mount bass drum anchor brackets both spurs and rubber tips for any kind of performance surface.



**Mike Malinin**  
(Goo Goo Dolls)



**Barret Martin**  
(Screaming Trees)



**Jörg Michael**  
(Rammstein)



**Marco Minnemann**  
(Fates Warning)



**John Stanier**  
(Helmet)



**John Tempesta**  
(White Zombie)



**Pat Torpey**  
(Mr. Big)



**Scott Travis**  
(Judas Priest)



**Jonathan Mover**



**Simon Phillips**  
(Toto)



**Mike Portnoy**  
(Dream Theater)



**Pietro Ramaglia**  
(La Bouche)



**Lars Ulrich**  
(Metallica)



**Alex Vespe**  
(Sandy Reed)



**Scooter Warner**  
(Bill Evans)



**Lenny White**



**Jan Robertson**  
(Fotograf)



**Scott Rockenfield**  
(Queensrÿche)



**Joel Rosenblatt**  
(Spyro Gyra)



**Rob Snijders**  
(Kong)



**Pete Wrba**



**Ali Ziemer**  
(Die Prinzen)

**Robin Bailey**  
**Mick Brown**  
**Arno Haackstein** (Acoustic)  
**Peter Johansson**  
**Wolfram Kellner** (Fiddlers Green)  
**Anders Kjellberg**  
**Troy Lucchetta**  
**Marcelo Palmiro** (Manhole)  
**Joey Peters** (Great Lee Buffalo)  
**Gunnar Pettersson**  
**David Silveria** (Korn)  
**Ron Welby** (The Offspring)  
**Stephan Wildauer** (Konstantin Wecker)

The TAMA logo is centered on a dark, textured background. It features a stylized orange flame-like icon to the left of the word "TAMA" in a bold, orange, sans-serif font. On the right side of the image, a portion of a TAMA drum is visible, glowing with a bright green light that creates a strong contrast with the dark background.

**TAMA Drums are sold and serviced by**

Authorized TAMA Distributors  
in the United States and Canada  
TAMA Drums are sold and serviced by  
TAMA Drums are sold and serviced by  
TAMA Drums are sold and serviced by

©Copyright 1996 NOV00039 Printed in Japan

The contents of this catalogue and copyrighted 1996 by HOSHIKAWA GAKKI CO., LTD. and may be not be  
copied in any manner without prior written permission of HOSHIKAWA GAKKI CO., LTD.